



**Esplanade
Presents**

**Huayi
Chinese Festival of Arts**

A Musical Journey of Reflection & Hope

作曲家黄若的音乐冥想

A DUST IN TIME

时
间

的

尘埃

HUANG RUO

黄若

re: mix

ACSO String Ensemble

亚洲文化乐团弦乐团

21 & 28 Feb 2021

5pm | Esplanade Concert Hall

2021年2月21与28日

下午5时 | 滨海艺术中心音乐厅

About Esplanade – Theatres on the Bay

Esplanade is Singapore's national performing arts centre and one of the busiest arts centres in the world. Since its opening in 2002, the centre has presented more than 49,000 performances and activities, drawing an audience of 32 million patrons and 112 million visitors. This architectural icon, with its distinctive twin shells, houses world-class performance spaces complemented by a comprehensive range of professional support services.

Esplanade's vision is to be a performing arts centre for everyone and its programming is guided by its social mission—to entertain, engage, educate and inspire. It seeks to enrich everyone's lives, including seniors, youth, children and underserved communities, through the arts. The centre's year-long calendar of about 3,500 arts performances and activities span different cultures, languages and genres including dance, music, theatre, and more. Of these, more than 70% are presented free for all to enjoy. Esplanade's visual arts programmes at its public spaces also allow visitors to view and explore art works for free.

Esplanade also brings the arts virtually to audiences in Singapore and beyond, through its diverse range of digital programmes on *Esplanade Offstage*, an all-access backstage pass to the performing arts and guide to Singapore and Asian arts and culture, with videos, podcasts, articles, quizzes and resources.

Esplanade regularly presents world-renowned companies and artists that attract international attention and add to Singapore's cultural vibrancy. The centre is also a popular performance home for arts groups and commercial presenters who hire its venues to stage a wide range of programmes. These carefully curated presentations complement Esplanade's own diverse offerings for audiences.

Esplanade works in close partnership with local, regional and international artists to develop artistic capabilities, push artistic boundaries and engage audiences. The centre supports the creation of artistic content by commissioning and producing new Singapore and Asian work for the international stage. As an Approved Training Organisation (ATO) of the SkillsFuture Singapore (SSG), Esplanade conducts a range of courses that develops technical capabilities for the industry nationally.

To bring even more of the arts to a wider audience and provide more platforms to support Singapore's next generation of artists, Esplanade is building a new theatre along its busy waterfront. Named Singtel Waterfront Theatre, the 550-seat venue will open in 2022.

Esplanade – Theatres on the Bay is operated by The Esplanade Co Ltd (TECL), which is a not-for-profit organisation, a registered Charity and an Institution of a Public Character. The Charity Council awarded TECL the Charity Governance Award – Special Commendation for Clarity of Strategy in 2016, and the Charity Transparency Award for four consecutive years since 2016.

TECL receives funding support from Ministry of Culture, Community and Youth and its Community Programmes are supported by Tote Board Family, comprising Tote Board, Singapore Pools and Singapore Turf Club.

Visit Esplanade.com for more information.

Board Members

Mr Lee Tzu Yang (Chairman)
Ms Yvonne Tham (Chief Executive Officer)
Ms Janet Ang
Mrs Rosa Daniel
Prof Lily Kong
Dr Jennifer Lee
Mrs Clara Lim-Tan

Mr Kenny Powar
Mr Sim Hwee Cher
Mr Suhaimi Zainul Abidin
Dr Ming Tan
Mr Yap Chee Meng
Mr Andre Yeap

Esplanade is a proud member of



Association of Asia Pacific
Performing Art Centres
www.aappac.com

FESTIVAL MESSAGE

Most of you would be almost relieved to bid the Year of the Rat goodbye while hoping for better things to come in the brand new Year of the Ox. What a year it has been! Shortly after we presented *Huayi – Chinese Festival of Arts* in Feb 2020, we experienced one of the darkest moments in life when the COVID-19 pandemic hit the world. Just like many other arts centres and theatres all over the world, Esplanade – Theatres on the Bay literally went dark as well, shutting our performing venues and cancelling all live performances for months.

But while there was undeniably much loss in many aspects, there was also a growing acceptance and awareness that it was probably also the best time for humanity to take stock, reflect on life and how best we should live. For those in the arts, there were questions on the role of the arts in such times, and as we enter the “new normal”, there were also many reflections and experimentations as to how artistic expressions and presentations would shift.

Being a fan of *wuxia* novels and TV dramas, I am reminded of novels written by celebrated Hong Kong author Louis Cha (also known as Jin Yong). When the protagonist falls into a valley or is forced to seek refuge in a cave, he looks deep into himself and emerges from the prolonged isolation with a new, unparalleled set of martial arts skills. The key is a prolonged period where, free of distraction, one can look deep within but also focus on practice and mastery of new skills.

In a way, the COVID-19 pandemic has enabled the same deep introspection for many of us. Artists all around the world too found their livelihood and their practice being questioned or even threatened. As we present the 19th edition of *Huayi* in 2021, we invite all of you into our artists’ worlds and creations. Many of these works were developed during the pandemic when there was new impetus to innovate, challenge and develop ideas.

During these challenging times, Esplanade remains committed to supporting and working with Singapore artists and has commissioned six new works to be presented in *Huayi 2021*. These include Toy Factory Productions’ *All the World is One’s Stage* featuring four Singapore theatre veterans; Nanyin concert *Fantasia* presented in celebration of Siong Leng Musical Association’s 80th anniversary; *Reflections* by contemporary Chinese music group MUSA The Collective; puppetry theatre production *The Universe According to Niu* by Paper Monkey Theatre; interactive dance work with installation *Interspace* by Ricky Sim, as well as a dance film *Dance en Scene – Rooms* by Cinemovement on Singapore contemporary dancer Albert Tiong.

Audiences can also look forward to new collaborations between artists in Singapore and overseas. For instance, Singapore’s chamber music ensembles re: mix and Asian Cultural Symphony Orchestra String Ensemble will be performing celebrated Chinese composer Huang Ruo’s *A Dust in Time*, which was written as a response to the ongoing pandemic. Tapping on technology and the digital capabilities that we have developed in recent months, Hong Kong sound artist GayBird will be virtually performing live with Singapore’s music ensemble Concordia Quartet in *Not Only Music in Anticlockwise*, a work which responds to the sounds of this era with dynamic images, music, space and installations.

Singapore Mandopop duo The Freshman comprising Carrie Yeo and Chen Diya have also created new material during this break for their first ever full-fledged concert *That Escalated Quickly* at the Esplanade Concert Hall during *Huayi 2021*.

We warmly welcome everyone to find some cheer and inspiration through the wide range of quality free performances too, including instrumental music, Chinese dance and Chinese Drums, amongst others.

Together with Esplanade Partner Ming Yi Foundation, our Principal Sponsor Knife Cooking Oil, Supporting Sponsors Berries 百力果 and Hong Leong Foundation, our Supporters Polar Premium Drinking Water and The Silent Foundation, and all our artists, we sincerely hope that these programmes will inspire and touch all of you, while injecting much positivity to start the new lunar year. May we all in our little ways become the superheroes or supreme martial arts masters we admire and soldier on, finding the strength and learning the skills to overcome difficult situations to impact those around us too.

Thank you once again for coming back to *Huayi* for your annual dose of nourishment for your soul. See you at Esplanade and online too!

Delvin Lee
Huayi – Chinese Festival of Arts
Producer

Message from ESPLANADE PARTNER

The Ming Yi Foundation was founded by Mr Steve Chang and Mrs Jenny Chen to support non-profit organisations in enhancing public welfare through innovation. As an Esplanade Partner and sponsor of *Huayi 2021*, the Foundation is committed to helping Esplanade – Theatres on the Bay make the arts accessible for everyone and continues to promote the appreciation of traditional arts and culture by presenting meaningful quality programme to the community.

We wish you and your family A Happy and Prosperous New Year!



Message from OUR PRINCIPAL SPONSOR



Knife brand is a household name in Singapore that is synonymous with wholesome family cooking since 1948. With its unique peanut aroma and proprietary blend, Knife brand cooking oil is a perfect cooking aid that brings the family together over the dining table throughout the festive period.

As part of our continuous support for the arts and culture, which are especially needed at a unique time like this, Lam Soon's Knife brand is proud to continue to be the Principal Sponsor of *Huayi – Chinese Festival of Arts* for the third year running. We hope you will enjoy the festival this year, both online and in person!

We wish you and your family a Happy Chinese New Year!
金牛兴旺发!

A handwritten signature in black ink, appearing to be 'Wang Shang Ying'.

Mr. Whang Shang Ying
Executive Chairman
Lam Soon Singapore Pte Ltd.

PROGRAMME NOTES

A Dust in Time: Passacaglia for Strings

No matter where you are and who you are, we are all affected by Covid-19. Most of us have experienced moments during this global pandemic where time and space seem to become frozen. For some of us, memories, feelings, and lives are forever trapped in that frozen time and space. Even after this crisis passes, our lives won't be the same anymore.

This future reality has made me think of creating a special piece for the people living or coming out of the shadow, giving them a piece of music to reflect, to express, to mourn, to bury, to find internal peace and strength, to heal, and to find hope, light, and warmth. The piece is composed for strings and can be performed by a string quartet, string ensemble or string orchestra. It is also available in three versions of different duration: 60 minutes, 32 minutes and 120 minutes.

The original version of 60 minutes, timed to symbolise the cycle and circle of the hour, is to be performed live without a break. Its structure is like a Tibetan sand mandala, created live. It slowly expands outward from the central essence point into its coloured fullness, and then subtract inwards back to the central essence point, thus fulfilling the two spiritual and life cycle and journey of traveling from nothing (emptiness) to something (fullness), and back again. A colourful perfect world created by sands, although beautiful, it will eventually return back to dust. By going through this entire journey, what will remain afterwards is the fulfilment and internal peace laying in the heart.

Huang Ruo

New York

June 2020

(1hr, no intermission)

HUANG RUO



Lauded by The New York Times for having “a distinctive style”, composer Huang Ruo has a vibrant and inventive musical voice that draws inspiration from myriad sources, from Chinese ancient and folk music to rock, jazz, noise and the Western avant-garde. Utilising a compositional technique he calls “dimensionalism”, Huang Ruo’s seamlessly integrates his many influences to produce diverse compositional works for orchestra, opera, theatre, dance, multimedia installations, among many others.

His music has been premiered and performed by renowned orchestras such as the New York Philharmonic, Boston Symphony Orchestra, BBC Symphony Orchestra, London Sinfonietta as well as by conductors such as Wolfgang Sawallisch, Marin Alsop, Andrew Davis, Michael Tilson Thomas, and James Conlon. Some of his notable operas include *An American Soldier*, the installation opera *Paradise Interrupted* and *Dr. Sun Yat-Sen*. His upcoming new opera *M. Butterfly* will receive its world premiere with the Santa Fe Opera in 2022. He has also served as the first composer-in-residence for Het Concertgebouw Amsterdam and was the visiting composer for the São Paulo Symphony Orchestra in Brazil.

Huang Ruo is currently a composition faculty at the Mannes School of Music in New York and is the artistic director and conductor of Ensemble FIRE. He was selected as a Young Leader Fellow by the National Committee on United States – China Relations in 2006.

re: mix

re: mix is an ensemble of classically trained musicians led by violinist Foo Say Ming, the ensemble recognises that classical music is in need of critical transformation in order to have contemporary relevance, and believes that classical music must be taken beyond its traditional boundaries. It cannot limit itself within its domain and must engage with other disciplines such as film, architecture, philosophy, etc. and in the process, not only become a testimony to what emerges from this interaction but also contribute to new ways of thinking about other disciplines. Other than re: mix's own projects and charity events, re: mix receives regular invitations to perform locally and in the region, such as Malaysia, Thailand, Indonesia and Hong Kong. re: mix's debut CD *Introducing re: mix*, and its 2nd CD *Wild and In Love* received raving reviews and was picked by The Straits Times Life! as one of the CD of the Year in 2012 and 2018 respectively.



Music Director	Foo Say Ming
First Violin	Siew Yi Li^ Alexander Korniev Ye Zhi Yang Shu Xiang Lu-min Chew
Second Violin	Chikako Sasaki* Gabriel Lee Wu Bing Ling Charmayn Chua Yap Qin
Viola	Janice Tsai* Keita Suyama Edmund Huang Thantakorn Lakanasirorat
Cello	Lin Juan* Song Woon Teng Chen Chia Min Wendy Stimpson
Double Bass	Julian Li* Eric Lee

^ Concertmaster

* Principal

ACSO STRING ENSEMBLE

The Asian Cultural Symphony Orchestra (ACSO) was founded in 2016 with the aim of championing Asian cultural symphonic music that go beyond melodic and instrumental pastiche, celebrating them with equal regard as their Western counterparts. Based in Singapore, the ACSO also seeks to serve as a platform to showcase Singapore artists through their performances and compositions. Featuring the string section for this performance, it embraces the same strength and vision in anticipation to the next fully assembled orchestral performance. The ACSO is the premier ensemble of Geylang Serai Community Club.



Music Director	Adrian Chiang
First Violin	Ng Wei Ping^ Gloria Parn Joelle Chiam Chung Tin Long Goh Yi Man Cao Yilan Albert Phang
Second Violin	Lim Hao Wei* Neville Athenasius Ang Cheryl Ho Saenghaengfah Tosakul Kristal Yang Valerie Tiong
Viola	Melody Teoh* Erlene Koh Joelle Hsu Liu Chi-Yun
Cello	Melissa Ong* Denise Tan Clara Tan Tan Wei Tian Koh Xuan Wen
Double Bass	Fang Po-Yu* Shohei Yoshihara
Orchestra Management	Edmund Song Chee Jun Hong Wong Kee Zhang

^ Concertmaster

* Principal

华艺节监制的寄语

鼠年离去，相信大家也喘了一口气，同时希望否极泰来，“牛”转乾坤！

过去一年的确不容易！2020年华艺节刚落幕，冠病疫情席卷而来，让许多人经历人生中最黑暗的一段时期。这股阴霾也笼罩全球艺术圈，世界各大剧场与艺术中心纷纷闭馆，滨海艺术中心也不例外，一连几个月取消了所有现场演出。

不过，有失必有得。疫情无疑给大家带来了各种冲击，但我们也逐渐明白，只有在黑暗中才能看见人性的微光，只有停下来才能好好检视生命的意义。随着世界走向“新常态”，艺术工作者们也不断思考“艺术”的价值，它在这个时代应扮演的角色，艺术的面貌在艺术工作者的反思与实验中慢慢地蜕变。

身为武侠小说与电视剧粉丝，我想起金庸先生笔下那些深陷险境的主角们。他们在陷落山谷或躲藏山洞期间，内观自省、悟出真理，习得绝世武功后再战江湖。人的蜕变也往往需要一段回归自我、心无杂念的过程，然后带着新的思维与技艺重新出发。

当全世界艺术工作者的价值遭到质疑，生计受到威胁，走进低谷后的他们是如何沉淀、积累，而后重生？2021年第19届的华艺节邀请大家走进他们的创作世界，见证他们的创新，感受他们的挑战，肯定他们的蜕变。

在这段艰难时期，滨海艺术中心也继续坚持支持本地艺术家的初衷。今年华艺节将有六部滨海艺术中心委约作品——TOY肥料厂制作、介绍四位本地资深剧场人的《一个人的舞台》；湘灵音乐社庆祝80周年的南音跨界音乐会《幻》；现代华乐组合MUSA的《空》；猴纸剧坊的偶戏《牛转乾坤》；舞蹈家沈绍杰结合舞蹈与装置艺术的互动性作品《间隙》；以及Cinemovement和舞蹈家张永祥合作的舞蹈影片《居。拘》。

观众也可期待海外艺术家与本地艺术家的合作，像是由本地两组弦乐团re:mix和亚洲文化乐团弦乐团，演绎由国际知名作曲家黄若为疫情时代创作的《时间的尘埃》；过去一年通讯科技快速发展，也促成香港作曲兼媒体艺术家梁基爵与新加坡协和四重奏合作的《不只顺时针逆行》，两个城市的艺术家将隔空带来跨地域、跨艺术和音乐类型的艺术飨宴。

另外，本地音乐组合插班生的两位成员，杨佳盈和陈迪雅，也准备将过去一年潜心创作的能量，带到她们在滨海艺术中心音乐厅的首场大型音乐会上引爆！2021年华艺节也会有一系列免费节目，包括音乐、华族舞蹈、华族鼓乐……等等，我们诚挚欢迎大家前来观赏，感受他们带来的欢乐与启发。

最后，我谨代表滨海艺术中心伙伴明怡基金会，主要赞助商刀标油，赞助商Berries百力果和丰隆基金、Polar Premium Drinking Water 和沉默基金会，以及所有艺术家们，诚挚希望今年华艺节的节目能为所有观众带来触动与感动，也在农历新年为新的一年注入希望与正能量。经过去年的“闭关修炼”，相信我们都有更强韧的“内力”来“牛”转乾坤，克服人生路上的各个难关。

再次感谢大家多年来对华艺节的支持，期待在滨海艺术中心和线上与你相见！

李国铭
华艺节
节目监制

滨海艺术中心伙伴献词

明怡基金会是由张明正先生和陈怡蓁女士所创办。自创立以来，基金会致力于支持多个通过新颖创新方式支持推动社会公益的非营利机构。作为滨海艺术中心的合作伙伴以及华艺节2021的赞助商，明怡基金会承诺与滨海艺术中心携手推广以及普及艺术，并通过呈现高质量与极富意义的节目促进大众对传统文化艺术与价值的欣赏和喜爱。

明怡基金会祝愿大家新年快乐、万事如意！



主要赞助商献词



刀标牌自1948年以来就是新加坡家喻户晓的品牌，是家庭健康烹调的代名词。刀标油独特的花生香气与专利配方，调制出一道道美味佳肴，让家人齐聚一堂，共度佳节喜气。

为了继续在支持文化艺术方面尽上一份力，尤其在这个特殊的时期，刀标牌很荣幸连续第三年赞助滨海艺术中心的华艺节。我们希望大家会喜欢华艺节2021的精彩节目——无论线上或是现场。

祝愿大家新年快乐、金牛兴旺发!

A handwritten signature in black ink, appearing to be "Wong Si Ying".

黄上盈
执行主席
南顺（新）私人有限公司

曲目介绍

时间的尘埃

无论是谁，身在何方，我们都会被这看似漫长的疫情所影响。时间和空间对很多人来说像是缓慢且凝固的。有些人的记忆，感受，和生活都犹如那缓慢凝固的时间和空间一般，无法流动。疫情也改变了我们现在，甚至可能是将来的生活。这首特别的作品，是为受疫情所影响的人们而写的。希望这个以音乐编织的时空，可以让人们回忆，抒发，寻得慰藉，找到内心的平静和力量，以及希望。《时间的尘埃》是为弦乐而作，可以由弦乐四重奏，弦乐室内乐团，或是弦乐队来演奏。它有三个不同时间值的版本：60分钟，32分钟，120分钟。

《时间的尘埃》最初60分钟版本象征着时间的轮回。它有两部分，每个部分长达30分钟，各有8段。第1部分是一个从无到有、从少到多、从简到繁、从空到色的过程；第2部分正好是第1部分的反转，它是一个从有到无、从多到少、从繁到简、从色到空的过程。从曲子的结构来讲，正如彩沙坛城(曼陀罗沙画)的制作一样，沙子描绘的缤纷世界，虽然终会化为尘埃，但得来的，是内心的充实与平静。

黄若
纽约
2020年6月

(1小时，无中场休息)

黄若



作曲家黄若被《纽约时报》赞誉“风格独树一帜”，他博采众长，从中国古乐与民乐、西方前卫音乐、实验音乐、噪音音乐、自然与非自然声响、摇滚乐和爵士乐中汲取灵感，运用一种他称之为“多维主义”的作曲手法，将中西元素完美结合，充满感染力，让人耳目一新。黄若的作品形式多样，包括管弦乐、室内乐、歌剧、戏剧和舞蹈配乐。他也创作跨越流派的混合型音乐、声音和建筑装置音乐、多媒体音乐、即兴实验音乐、民谣摇滚和电影配乐。

黄若的作品多由世界知名乐团首演或演出，其中包括纽约爱乐乐团、波士顿交响乐团、BBC交响乐团、伦敦小交响乐团等。沃尔夫冈·萨瓦利什 (Wolfgang Sawallisch)、马林·阿尔索普 (Marin Alsop)、迈克尔·蒂尔森·托马斯 (Michael Tilson Thomas)、詹姆斯·康伦 (James Conlon) 等杰出指挥家都曾执棒演奏他的作品。黄若的多部歌剧包括《一个美国士兵》、《惊园》、《中山·逸仙》等皆获好评。他的新歌剧《蝴蝶君》也将在2022年于美国圣达菲歌剧院上演。黄若曾担任荷兰阿姆斯特丹音乐厅的首位驻场作曲家，亦担任了巴西圣保罗交响乐团的客席作曲家。

黄若现任职于纽约曼尼斯音乐院教授作曲，是红火乐团 (Ensemble FIRE) 的艺术总监兼指挥。2006年，黄若被美中关系全国委员会选为“年度青年领袖”。

re: mix

re: mix 是由一群志同道合的古典音乐家组成的乐团。乐团由小提琴家符史洛带领，聚集了新加坡本地以及国际优秀乐手。团员们觉得古典音乐也需要与时并进，要注入当代意义才能跟上时代的脚步。他们认为，古典音乐不应为自己设限，反而应该跨越传统的藩篱，与其他学科，如电影、建筑、哲学等进行互动。在这个过程中，它不仅仅只是这种交互形成的载体，也能推动其他学科发展新思维。除了自己的音乐会和慈善活动外，re: mix 经常受邀在本地、马来西亚、泰国、印度尼西亚和香港等地区演出。re: mix 的首张CD《走进re: mix》，以及第二张CD《深·爱》都获得好评，并分别被海峡时报评为2012 和2018年年度最佳CD。



音乐总监	符史洛
第一小提琴	萧壹励^ Alexander Korniev 叶芝 杨舒翔 周露敏
第二小提琴	佐々木智佳子* 李格标 吴冰凌 蔡嘉敏 叶琴
中提琴	蔡宜臻* 周山啓太 黄文志 Thantakorn Lakanasirorat
大提琴	林隽* 宋温庭 陳迦憫 Wendy Stimpson
低音提琴	李勇锐* 李诸福

^ 乐团首席

* 首席

亚洲文化乐团弦乐团

亚洲文化乐团于2016年成立，它们的成立旨在演绎与发扬具亚洲元素的交响乐、以及为新加坡音乐人提供交流与展示的平台。乐团致力于发掘和推广新加坡作曲家及他们的音乐作品，让我们的音乐人能在世界音乐界绽露光芒。乐团现为芽笼士乃民众俱乐部属下的文化团体。此次演出将由乐团的弦乐组负责演奏。



音乐总监	郑逸杰
第一小提琴	黄伟彬 [^] 彭恩慧 詹燕霖 钟天朗 吴漪曼 曹逸澜 彭柏尧
第二小提琴	林浩为* 洪新淳 何序如 Saenghaengfah Tosakul 杨焯婷 张慧玲
中提琴	张瑾萱* 许恩琦 许敏 刘季昀
大提琴	翁诗琴* 陈诗灵 陈筱恩 陈纬恬 许瑄芝
低音提琴	方柏喻* 吉原祥平
乐团行政	宋俊杰 徐君宏 黄其彰

[^] 乐团首席
^{*} 首席



刀
标
油
，
为
中
华
美
食
增
添
色
彩
。



Gift a Seat



We're building a new waterfront theatre for all generations of Singapore artists and audiences to come together at #mydurian.

Support our *Gift a Seat* initiative to help us build our Singtel Waterfront Theatre at Esplanade.

Donations start from \$2,800 with a limited number of seats available for donors who would like to have a personalised message on a seat.

For more information,

E: donations@esplanade.com

P: 6828 8222


www.esplanade.com/giftaseat





1 Esplanade Drive, Singapore 038981 | Customer Experience Hotline: 6828 8377



Esplanade is a charity and not-for-profit organisation. Help us bring the joy and inspiration of the arts to different communities, including the underserved.

 www.esplanade.com

 [EsplanadeSG](https://www.facebook.com/EsplanadeSG)

 [EsplanadeSingapore](https://www.instagram.com/EsplanadeSingapore)
[#esplanadesg #mydurian](https://www.instagram.com/EsplanadeSingapore)

Esplanade gives our heartfelt thanks
to our Esplanade partner, arts benefactor, donors and sponsors for believing in our vision to be a performing arts centre for everyone. They made all these possible!^



3,915

activities took place at Esplanade.

Ticketed



1,111

Non-Ticketed



2,804

1,920,590



People attended our activities at the centre.

Ticketed

311,234

Non-Ticketed

1,609,356

We believe that everyone should be able to experience the joy of the arts, including children, youth, seniors, migrant workers and individuals with special needs. Our community engagement activities bring the arts to those in need.



597
Activities

14,476
Participants

^Figures for Esplanade's activities from Apr 2019 to 31 Mar 2020.

Your contribution* will make a difference.

On behalf of the communities we serve, thank you!
Find out how you too can make a difference through the arts at Esplanade.

Donate at www.esplanade.com/donate
To find out more, email us at donations@esplanade.com or speak with us at 6828 8321.

Esplanade is a charity and an Institution of a Public Character. Your donation to us is matched dollar-for-dollar by the Cultural Matching Fund. Please note that the prevailing tax exemption scheme for donors and sponsors of Arts-Related Businesses will depend on the qualifying criteria imposed by IRAS.



With Gratitude

The continued partnership and support of our partner, arts benefactor, sponsors and donors is critical to our work and makes it possible for us to benefit even more people. We extend our heartfelt thanks to our partner, arts benefactor, sponsors and donors for believing in our mission and for generously supporting us from 1 April 2019 to 31 March 2020.

ESPLANADE PARTNER

Ming Yi Foundation

ARTS BENEFACTOR

Patek Philippe

SPONSORS

Allen & Overy LLP
AXA Insurance Pte Ltd
Bowen Enterprises Pte Ltd
Burger King Singapore Pte Ltd
Carl Zeiss Pte Ltd
CLS International (1993) Pte Ltd
Club Med Services (S) Pte Ltd
Creative Eateries Pte Ltd
EFG Bank Ltd
Embassy of France in Singapore
Embassy of Israel in Singapore
Embassy of Italy in Singapore
Embassy of the Philippines, Singapore
Field Catering & Supplies Pte Ltd
(Polar Water)
Finnair Plc
Fred Perry
High Commission of Canada in Singapore
Hong Leong Foundation
K.N.P. Trading Pte Ltd
Keppel Corporation Limited
Kwan Im Thong Hood Cho Temple
Lam Soon Singapore
LCH Lockton Pte Ltd
Samsung Asia Pte Ltd
Singapore Press Holdings Limited
The Travel Corporation (2011) Pte Ltd
ViewQwest
Yong Siew Toh Conservatory of Music

DONORS

Anonymous
Aberdeen Standard Investments
Charitable Foundation
Alan Tang
Allen & Overy LLP
Alvin De Souza
Anastasia Tjendri-Liew
Andre Yeap
Asia Ghani Restaurant and Catering Pte Ltd
BinjaiTree
Bowen Enterprises Pte Ltd
Brendan Hannigan
Chan Boon Kheng
Clifton & Mildred Tan
Creative Eateries Pte Ltd
Credit Suisse AG
D-Y Lin & Tom Donnelly
Daniel Teo
Dentons Rodyk & Davidson LLP
Elisabeth Clarice Esther
Gustava de Rothschild
Farid Khan Bin Kaim Khan
Foo Jien Jieng
Fort Sanctuary
Gibbrael Isaak
Goh Ka-Sin
Hong Kong Street Old Chun Kee Pte Ltd
Janet Ang
Jared Phau Chong Ee
Jennifer Lee
Jerusha Tan
Khairiani Binte Ab. Karim
Kwee Gee Pte Ltd
Lee Kok Kuan
Lee Tzu Yang
Lee Woon Shiu
Lim Ewe Leong

Main Power Impex Co
Makansutra Gluttons Bay Pte Ltd
Marian Koh
Matahari Chicken Rice Pte Ltd
N Subramaniam
Natarajan Varaprasad
Nicholas Lim
Ong Chu Poh
Preetha Pillai
President's Challenge
Privato Pte Ltd
Rajesh Achanta
Ravindran s/o Sivalingam
Raymundo Yu
Rebel Owl Pte Ltd
Salim Moollan Pte Ltd
See Tho Keng Leong
Shabbir & Shahnaaz Hassanbhai
Singtel
Starlike Services Pte Ltd
Syifa' Satay LLP
Tan Chin Tuan Foundation
Tan Pheck Hong
Teo Chen Wei Terence
Terence Lim Chee Wen
The Chesterman Family
The Silent Foundation Ltd
The Travel Corporation (2011) Pte Ltd
Toh Bao En
Victor & Michelle Sassoon
W Optics Pte Ltd
William & Mavis Tok
Yap Chee Meng
Yeow Chee Keong
Yoosuf Moiz
Yvonne Tham

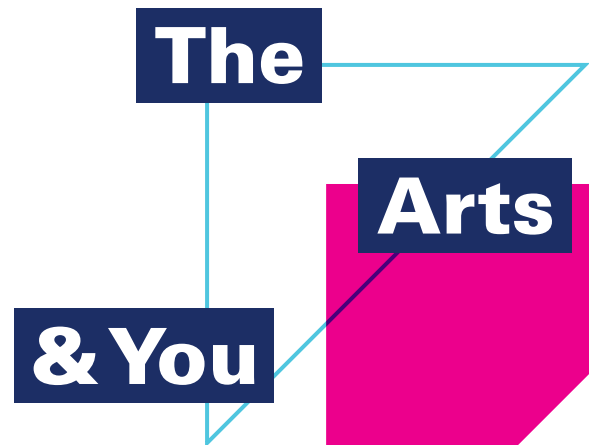
We're a charity with a social mission. We believe that the arts can transform lives.

We believe that an experience with the arts is special and that with your generous support, more people will get a chance to enjoy the arts. Join us in sharing the joy of the arts and help us reach more communities in need.





Esplanade &Me



Your access to the arts starts with *Esplanade&Me*.

Enjoy year-round specials at Esplanade:

- Savings on tickets (selected shows)
- Invitations to events, workshops and tours
- Retail and dining specials at Esplanade Mall and partners

Sign up today!

www.esplanade.com/membership



Get a limited edition #mydurian mask* (worth \$10)

For new sign ups with min. spend of \$50 in one transaction on tickets to Esplanade Presents programmes from 1 Dec 2020 to 28 Feb 2021.
*While stocks last.



Free to join



Free upgrade when
you spend \$500



Free upgrade when
you spend \$1000



Free for kids
12 years & under



Free for ages
17 to 26 years



Free for ages
55 & above

LET THE GOOD TIMES ROLL!

Get the season rolling with an abundance of special deals and treats! From 1-for-1 deals to limited edition merchandise and free membership, [tap here](#) to play and win it all.

Look out for these ox-picious deals.

Complimentary
Red Packets



\$18 off
Yu Sheng

\$28 off
total bill

Terms and conditions:
Promotion period runs from 28 Jan 2021 to 28 Mar 2021, or until all prize vouchers have been fully redeemed.
Other terms and conditions apply. Tap [here](#) for more information.

1 Esplanade Drive, Singapore 038981 | Customer Experience Hotline: 6828 8377



Huayi – Chinese Festival of Arts 2021
is made possible with the generous support of:
华艺节2021谨此感谢以下赞助商的慷慨赞助:

In Association with
Esplanade Partner
滨海艺术中心伙伴



Ming Yi Foundation

Principal Sponsor
主要赞助商



Lam Soon Singapore

Supporting Sponsors
赞助商



Berries World of Learning School



Hong Leong Foundation

Supported by
赞助商



Field Catering & Supplies Pte Ltd

The Silent Foundation
In aid of silent sufferers

The Silent Foundation Ltd