



**ANNEXE**  
STUDIO

**TECHNICAL INFORMATION**

Esplanade – Theatres on the Bay  
1 Esplanade Drive  
Singapore 038981

T (65) 6828 8222  
E [annexstudio@esplanade.com](mailto:annexstudio@esplanade.com)

Esplanade – Theatres on the Bay’s **ANNEXE STUDIO** is a multi-disciplinary venue that encourages experimentation, interaction and innovation.

With 7,400 sq ft across two floors, this flexible space aims to offer both artist and audience new experiences.

## CAPACITY

Standing room only                      460, comprising:  
Level 1 (main studio)                  310  
Level 2 (gallery)                        150

*Note that audience seating is possible, but will significantly reduce capacity. All required audience seating is to be supplied by the User.*

## LOADING AREA

Accessed along Raffles Avenue, the Annexe Studio’s loading bay is conveniently located at street level with step-free access.

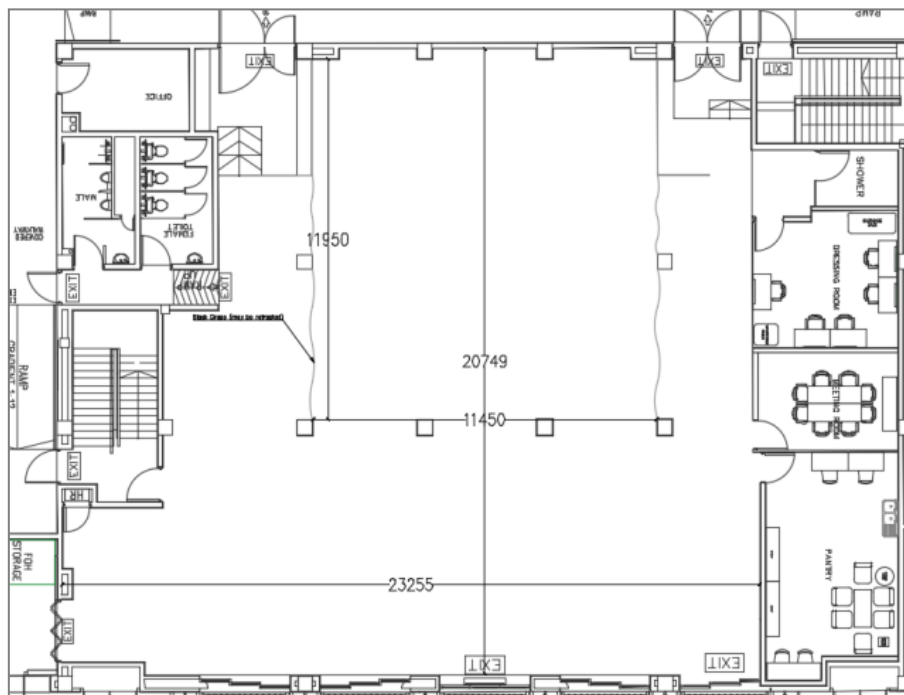
Loading Bay Opening                    2.63mH x 2.8mW

## STAGE

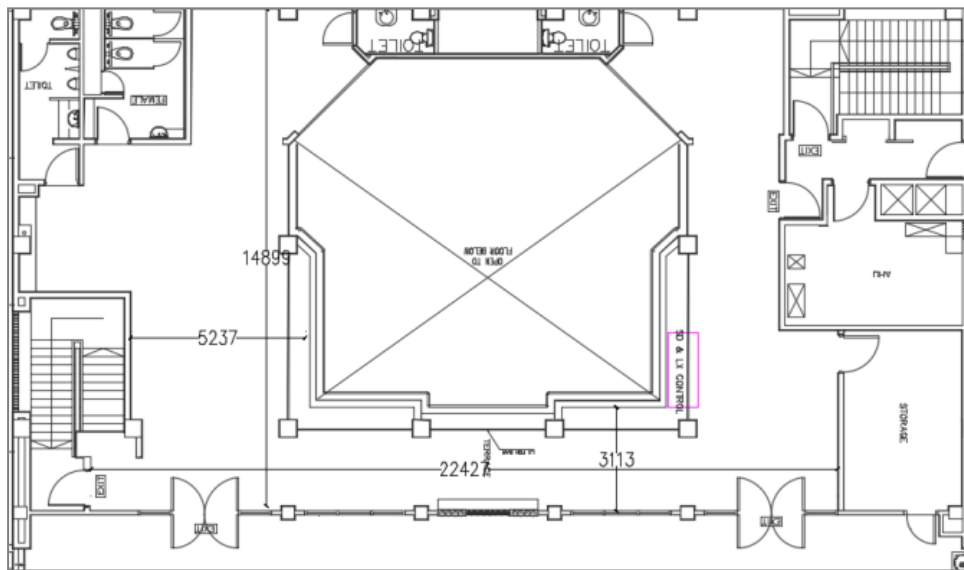
Floor    Black painted marine ply  
Dimensions                                  Approx. 12mD x 11.5mW (Level 1, main studio deck)

Detailed venue plans are available upon request

## Level 1 (Main Studio)



Level 2 (Gallery)



**ROSTRA**

NivoFlex Professional risers are available, with advance arrangement. These are modular (2 x 1)m platforms with adjustable heights of 160mm, 200mm, 400mm, 600mm, 800mm and 1000mm.

**CHAIRS & MUSIC STANDS**

Chairs, for performance use, and music stands, are available with prior arrangement.

**DANCE EQUIPMENT**

A selection of performance surfaces and complementary freestanding ballet barres and mirrors, are available with prior arrangement.

**PIANO**

The Annexe Studio has [01] upright Yamaha U5 piano, pitched at A=440. The piano must be tuned before each public performance, by approved the Esplanade’s resident piano tuner only. Any requests for repitching will be reviewed and subject to approval.

**WARDROBE, WIGS & MAKE-UP**

Laundry and alterations of performance-related costumes, and wigs and make-up support, may be arranged with prior notice.

**ELECTRICS**

All electrical equipment brought into the Annexe Studio must conform to local codes, be of good quality, and in good repair. Suspect equipment will be subject to an Electrical Safety Test and the Annexe Studio reserves the right to disallow its use.

Power connections, to isolators, are subject to inspection by a Licensed Electrical Worker (LEW) and ELCB and overload protection are to be supplied by the User.

**POWER**

Local Power Supply	230v, single-phase, 50Hz
Standard Domestic Connector	13A Type G (British)

Note that power in the venue is shared between lighting, video and sound.

**WORK / REHEARSAL LIGHTING**

The Annexe Studio has ample domestic lighting in all areas that are ideal for workshops, rehearsals and general non-performance related activities. The main deck is lit with high bay LED lights and both Level 1 and Level 2 are lit with LED tubes.

**STAGE / PERFORMANCE LIGHTING**

The Annexe Studio has been fitted with a basic lighting rig consisting of PAR Cans, for an overhead stage wash, and Profiles, for a frontal wash. A combination of these creates a static general wash on the stage. These fixtures have also been fitted with scrollers so that colour washes may also be achieved.

Any replacement, removal, or amendment to this rig is to be discussed with the venue in advance and all expenses related to restoring the rig are to be borne by the User. A detailed lighting plan is available upon request.

Overhead Stage Wash

Truss A	[04]	Acclaim Floods 500W; no colour gel frame
Truss B & C	[14]	PAR64 WFL 1000W, silver; fitted with Motorised Yokes and 8" Rainbow Scrollers <i>Note that the motor yokes are to aid and expedite focusing at set-up, and are not intended for use as 'moving heads' in performance.</i>

Frontal Wash

Truss A	[03]	Selecon Pacific 12/28° Zoom 1000W Profiles
Level 2 FOH LX bar	[10]	Selecon Pacific 12/28° Zoom 1000W Profiles

<u>Effects</u>	[01]	Martin Stage Hazer
----------------	------	--------------------

## HOUSE LIGHTS

The House Lights consist of warm, dimmable, track LED lights on both Levels 1 and 2. These are controlled from the FOH control position on Level 2, house right.

## CONTROLS

Avolite Pearl Expert, with programmable submasters, located house right, at the Level 2 FOH control position.

## PROJECTION

The Annexe Studio is equipped with a projector, permanently rigged at the centre of the balcony rail. Rental rates are available through your production liaison.

Controls are located at the Level 2 FOH control position.

Projector	Panasonic PT – EZ590E
Lens	Standard 1.22 – 2.26:1
Brightness	5,400 lm
Resolution	1920 by 1200 (WUXGA)

A projection screen measuring 3.2mH x 4.27mW (aspect ratio 4:3) is also available and can be rigged upstage.

**AUDIO**

The Annexe Studio is equipped with a standard pre-rigged, aligned and pre-tuned audio configuration. All expenses related to restoring to the standard rig from any replacement, removal or amendment are to be borne by the User.

Note that there is no clean power for Audio.

**P.A SYSTEM**

Level 1 (at stage level; not flown)

Main L+R (per side)	[03]	d&b J8 large format 3-way line array loudspeaker
Main Sub (per side)	[02]	d&b JSub large format cardioid subwoofer
Fills (per side)	[02]	d&b T10 2-way loudspeaker (separate matrix send)
Delays	[04]	Meyer UPM-1P ultra-compact wide coverage loudspeaker

Stage

Foldback	[07]	d&b MAX12 monitor 2-way full range loudspeaker
----------	------	--

**FRONT-OF-HOUSE CONSOLE**

The default front-of-house mix position is located on Level 2, house right. This may be shifted to Level 1, with prior arrangement.

Yamaha QL5 digital mixing console with:

- 24-channel stage box
- Virtual Rack with complete range of onboard effects and processing
- An iPad with Yamaha’s StageMix app is available for remote mixing

A 32-channel Yamaha QL1 can be made available for a monitor console, with advance notice.

**OUTBOARD GEAR & PLAYBACK**

Located at Level 2, FOH control position:

[01]	Yamaha SPX2000 digital effects processor
[01]	TC Electronic M3000 studio reverb processor
[01]	CD Player / Recorder

**MICROPHONES**

An assortment of microphones is available for smaller-scale amplified events. Selection will be made upon review of input list, or based on each event’s requirements, and on equipment availability. Charges will be incurred for the use of miniature capsules worn on the body.

**COMMUNICATIONS**

Clearcom Tempest Wireless Intercom System (1 channel, 1 ring)	[04]	beltpacks & headsets
--	------	----------------------

### AMENITIES

The User may also enjoy the following amenities available in the Annexe Studio:

- [01] Dressing Room equipped with 5 tables with make-up mirrors and clothes racks
- [01] Shower stall and sink with hot and cold running water
- [01] Meeting Room
- [01] Lounge with lockers for safekeeping of valuables

The local domestic power supply is 230v, 50 Hz.

Do check in with the Annexe Studio's staff before connecting any electrical appliance and note that any appliance that generates heat, e.g. irons, hair curlers, etc. must be monitored at all times.

Free Wi-Fi and local telephone calls are also available in the venue.

Users of the Annexe Studio are also welcome to enjoy the offerings of the Green Room, located at Basement 1 of the main building.

### WORKPLACE HEALTH & SAFETY

We take health and safety very seriously at the Annexe Studio and it is of utmost importance that all who work at and visit the venue are free from any harm.

Steel-toed safety shoes are necessary when any loading/unloading and technical work is conducted. Hardhats must also be worn when overhead works occur.

Users are obligated to ensure that their representatives and contractors are briefed and comply with these regulations. The Annexe Studio reserves the right to stop works where necessary, in the interests of security, safety and health.

