



Feed Your Imagination

esplanade

FEED

YOUR

IMAGINATION

ARTS PROGRAMMES FOR SCHOOLS 2026





F.Y.I 2025: Legend of the Three Stars



F.Y.I 2025: Samsui Women - One Brick at a Time

“Students were engaged. Teachers had enough pre- and post-material to follow up with the students which value adds to the entire experience. Talk back session provides good feedback for educators too.”

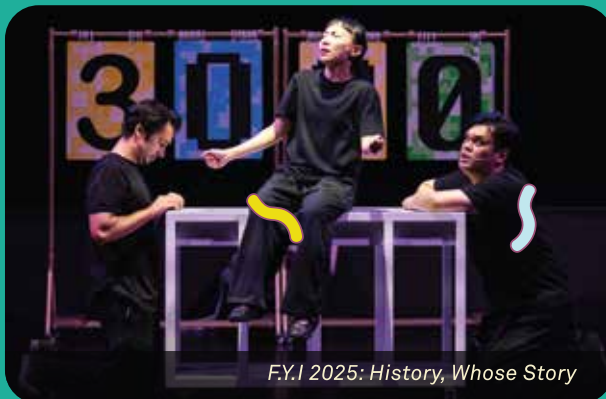
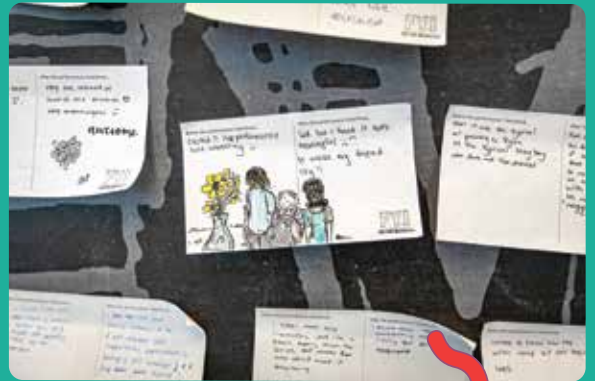
– Teacher, Northlight School on *The Thursday Afternoon Club: The Light of Time* by Drama Box



F.Y.I 2025: Day Out! @ Esplanade

“Both myself and my students enjoyed the show. I really like the post-show interaction segment. It helps students to consolidate their learnings.”

– Teacher, Oasis Primary School on *A Tale of Two Islands* by Ding Yi Music Company



F.Y.I 2025: History, Whose Story

“It was very interactive and fun. It was a memorable experience.”

– Student, Springfield Secondary School on *Legend of the Three Stars* by Orkestar Trio

CONTENT PAGE



A Message for You 4

The F.Y.I Experience 5

Production Categories 6

Productions at a Glance 7

Day Out! @ Esplanade
By Various Artists 8

ERROR 403: This School Is Mine
By The Necessary Stage 10

A Sea of Stories:
Music and Myths
from Southeast Asia
By Open Score Project 12

The World of Our Own
By The Finger Players 14

Wouldn't It Be Nice?
By Drama Box 16

The Musical City
By Phang Kok Jun 18

The Musical City Student Tour 20
By Phang Kok Jun, ARTABLE
and Mark Nicodemus Tan

Booking Information 22

Group Visits &
Learning Journeys 23

Performance Arts Based Learning
(PABL) Programme
Songsmith: Singapore Songs
and Songwriting 24

By Inch Chua, Metronome
Collective and Esplanade –
Theatres on the Bay

Other Programme Highlights 25

Calendar Overview 28

Contact Details 30





WE WELCOME YOU TO FEED YOUR IMAGINATION

Through *Feed Your Imagination* we dream of the future.

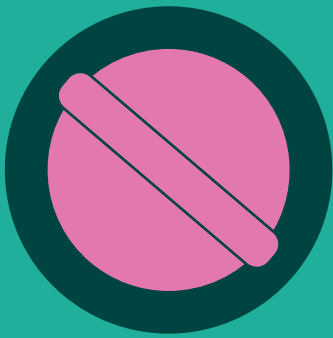
Thinking about the state of the world today can fill one with dread, fear and a prevailing sense of futility. Offering inspiration and optimism for those growing up in these times of flux is not easy. Here is where we believe the arts can come in.

Through music, we can bring you on a journey of discovery and understanding, crossing oceans and divides both visible and invisible. Through theatre, we can rehearse for real life, gently acknowledging our fears, biases and prejudices.

In building the line-up for *Feed Your Imagination*, we reflect with our artists on what we think our next generation of changemakers—our students of today—might need the most right now. For our 2026 line-up, we present to you our best wishes and hopes for them and look forward to sharing it with you and your students.

See you at Esplanade!

Sincerely,
Edlyn Ng
Programmer, Children & Youth
Esplanade – Theatres on the Bay



THE *F.Y.I* EXPERIENCE

An *F.Y.I* experience is more than just a performance for your students to attend.

Set in a professional venue, and working with quality artists, Esplanade seeks to programme relevant works that are engaging & meaningful for students.



1. Educational Production

A curated performance designed for students + facilitation (e.g interactive activities, post-show discussion)

2. Performance Guide

For the full *F.Y.I* experience, we also provide a **Resource Pack** which consists of an educator's guide and a student's guide.

- **Educator's guide:**
Resource material to help prepare students for the *F.Y.I* experience or to extend their learning beyond the performance.

Emailed to educators who book into the show.

- **Student's guide:**
A guide with information as well as activities related to the performance they will be watching.

Given out to students on-site for live performances at Esplanade.

3. Digital Programme

Digital offerings are available for selected programmes. The following is available for students to access in class or as part of home-based learning:

- **The Musical City,**
refer to page 18 for more details.

PRODUCTION CATEGORIES

Based on the learning objectives, *F.Y.I* productions can be classified under these categories:



Productions under this category address ethical and social-emotional issues that are fundamental to the growth of a person of good character.

Key objectives include equipping students with tools to cultivate strong values through self-reflection, engender students with a sense of self-worth, and encourage them to understand, evaluate and appreciate multiple perspectives.

Examples of topics include those related to self-esteem, identity, prejudice, and social relationships.



Productions under this category address community, national and/or global issues, in line with emerging 21st century competencies.

Key objectives include equipping students with the tools to cultivate concerned, informed and responsible citizens through the subject matter discussed within the production.

Examples of topics include those related to the preservation of culture and heritage, exploring ideas related to national identity and learning more about important historical events and their impact.



Productions under this category are representative of art forms from various cultures and traditions, ranging from music, dance, and drama.

Key objectives include heightening students' cultural awareness and engaging with the world they live in. Through exposure to these art forms, students will begin to understand and appreciate their own and/or others' histories, traditions and cultures.



Productions under this category expose students to genre-specific art forms in a supported environment, and are scaffolded for novices.

Key objectives include heightening students' awareness and enhancing their knowledge of a genre-specific art form, while cultivating an appreciation for the aesthetics, practice and expressions of the form.

Some examples of genre-specific art forms include jazz music, contemporary dance and traditional forms of puppetry.

2026 PRODUCTIONS (AT A GLANCE)



Term	Dates	Productions	Artists
Term 2	19 - 21 May	Day Out! @ Esplanade	By Various Artists
Term 3	20 - 23 Jul	ERROR 403: This School Is Mine	By The Necessary Stage
	22 - 24, 27 - 31 Jul	A Sea of Stories: Music and Myths from Southeast Asia	By Open Score Project
	28 - 30 Jul (By invite only)	Performance Arts Based Learning (PABL) Programme Songsmith: Singapore Songs and Songwriting	By Inch Chua, Metronome Collective and Esplanade – Theatres on the Bay
	25 - 28 Aug	The World of Our Own	By The Finger Players
Term 4	20 - 23 Oct	Wouldn't It Be Nice?	By Drama Box
	28 - 30 Oct	Day Out! @ Esplanade	By Various Artists
Year Round	Jan - Dec	The Musical City	By Phang Kok Jun
	May 2026 – May 2027	The Musical City Student Tour	By Phang Kok Jun, ARTABLE and Mark Nicodemus Tan

EDUCATORS' DEVELOPMENT WORKSHOPS

As part of *F.Y.I.*, teacher development workshops are designed to offer useful introductory tips and how-to tools for teaching an artform or concept in the classroom to complement the *F.Y.I.* experience. These intimate workshops encourage hands-on participation, and teachers should take the opportunity to interact with the artist facilitator, as well as each other to discuss possible challenges and solutions.

Information about the *Feed Your Imagination (F.Y.I.)* programme is also available at www.esplanade.com/fyi.



Day Out!

@ESPLANADE



Multidisciplinary

DAY OUT! @ ESPLANADE

By Various Artists

Duration: 2hrs 30mins

Language: English

Venue: Various locations around Esplanade

Ticket Price: \$30

Turn to page 22 for booking details.

Watch an arts performance, participate in a workshop and explore a performance venue—all in one day! Join us for *Day Out! @ Esplanade*, an exciting full-day programme packed with artful experiences you won't want to miss!

May edition

Recommended for: Lower Primary

19 – 21 May 2026, Tue – Thu, 9.30am

At *Day Out! @ Esplanade* in May, lower primary level students get to enjoy an eye-opening and colourful encounter with traditional instruments from around the world through a vibrant performance by KULCHA at the DBS Foundation Outdoor Theatre. They will then be treated to a special dramatised tour of the Esplanade Concert Hall and discover interesting insights about the world-class performing venue. To cap off the day, students get hands-on with vocal music in a workshop led by exciting music collective, L'arietta Productions. What's more, they will get to experience how their voices sound in the meticulously tuned acoustics of the Esplanade Concert Hall!



Oct edition

Recommended for: Upper Primary **28 – 30 Oct 2026, Wed – Fri, 9.30am**

At *Day Out! @ Esplanade* in October, KULCHA returns to present an eye-opening and colourful encounter with traditional instruments around the world at the DBS Foundation Outdoor Theatre (first presented in the May edition of *Day Out! @ Esplanade*). Students will then enjoy a hands-on story crafting performance-workshop using visuals, sound and text with multidisciplinary artists Jessica Heng and Bamby Cheuk. What's more, they will get to go on a guided tour of the Esplanade Concert Hall with drama educators and get to discover the unique features of the Esplanade Concert Hall.

Learning Objectives

- Experience traditional instruments from different cultures and learn about musical elements.
- Discover the unique features of Esplanade and its performing arts venues.
- **[May]** Gain an understanding of different styles of singing and performing together in a group.
- **[Oct]** Understand how stories are created, and apply this newfound understanding by making their own stories using visuals, sound, text and materials from everyday life.



**ERROR 403:
THIS SCHOOL
IS MINE**



Theatre
An Esplanade Co-production

ERROR 403: THIS SCHOOL IS MINE

By The Necessary Stage



Recommended For: Secondary – Tertiary

20 - 23 Jul, Mon - Thu, 2.30pm
23 Jul, Thu, 5pm

Duration: 1hr 30mins, no intermission
Each performance includes a post-show discussion.
Language: English
Venue: Esplanade Annexe Studio
Ticket Price: \$27

Turn to page 22 for booking details.

Learning Objectives

- Gain exposure to the art form of theatre through an interactive work written by local theatre makers.
- Be empowered to think critically and be discerning in their judgement of what is right and wrong.
- Develop confidence to overcome challenges with the use of innovative strategies.
- Be motivated to play a positive role in Singapore's future as active changemakers.

Are you ready to experience the future of learning?

As a front runner in the use of educational technology, we here at Vista View Secondary School are proud to announce the roll out of our latest EdTech marvel: Vanguard! This incredible machine has been designed and created to guide our learning and behaviour so that you can be shaped into the best leaders for our future. And today, our lucky Secondary Three students have been specially selected as beta testers and get to experience the next frontier in learning.

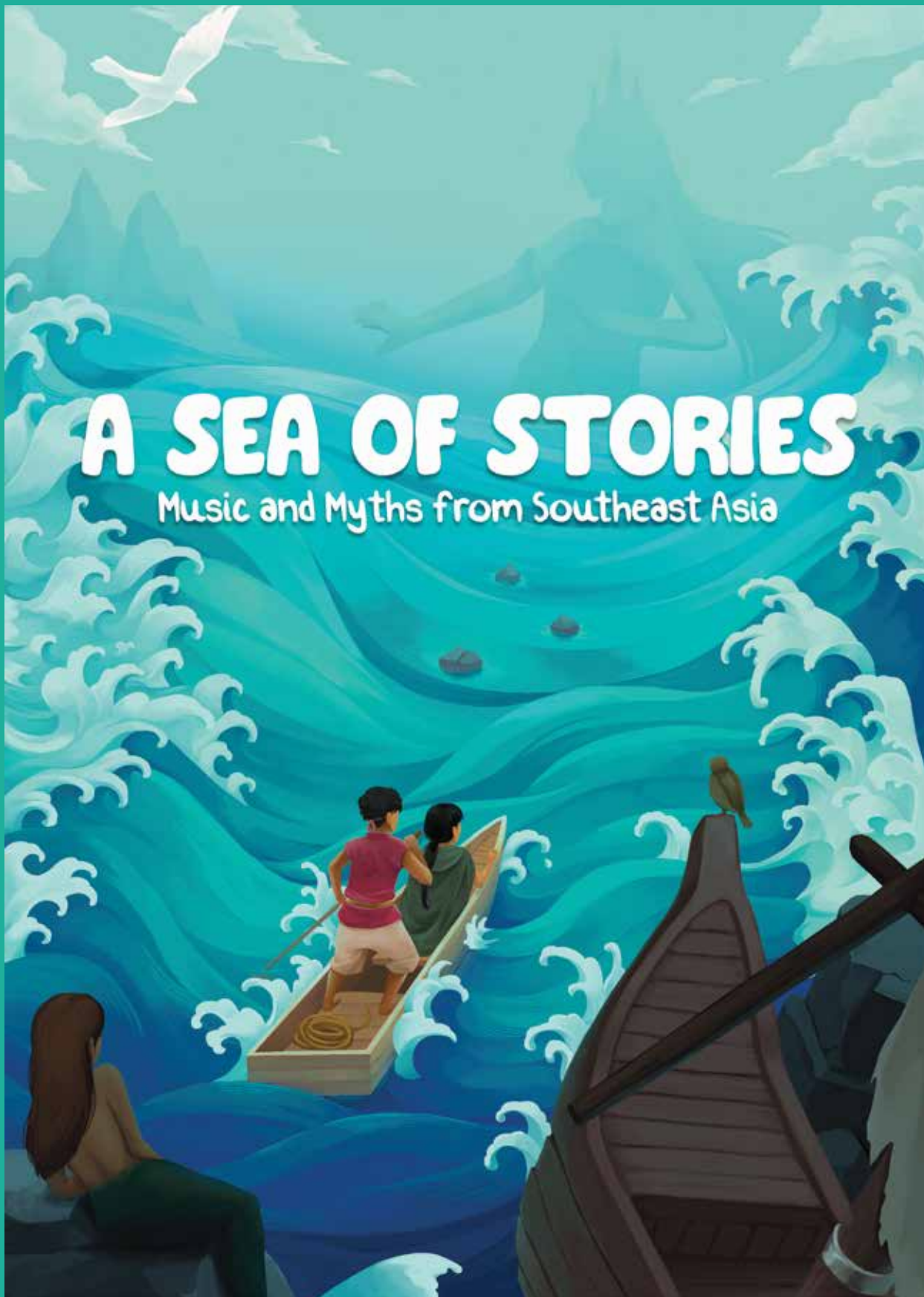
Vistans, are you ready to begin this eye-opening experience with Vanguard? Let's see how far it can take you.

The Necessary Stage presents *ERROR 403: This School Is Mine*, a brand-new interactive theatrical experience for youths. Co-created by Deonn Yang and Sindhura Kalidas, this engaging and thought-provoking work explores how Artificial Intelligence (AI) influences the way we learn, our autonomy and our moral compass in an increasingly smart nation.



A SEA OF STORIES

Music and Myths from Southeast Asia



Music
An Esplanade Commission

A SEA OF STORIES: MUSIC AND MYTHS FROM SOUTHEAST ASIA

By Open Score Project



Recommended For: Primary

22 – 24 & 27 Jul, Wed – Mon, 10am
28 – 31 Jul, Tue – Fri, 2.30pm

Duration: 1hr 15mins, no intermission.
Each performance includes a post-show discussion.

Language: English
Venue: Esplanade Recital Studio
Ticket Price: \$27

Turn to page 22 for booking details.

Learning Objectives

- Discover folklores from Vietnam, Indonesia and Thailand told through a musical narrative.
- Experience music from Southeast Asia and learn about the use of ethnic instruments such as the Saluang, Piphat and Dan Bau.
- Develop an awareness and appreciation for the diversity of musical cultures in Southeast Asia.

For Educators

As a companion programme, there is a workshop for *A Sea of Stories* specially for educators. For more information, visit www.esplanade.com/fyi.

What lies within the conch shell? Lift it to your ear!
The magical music of the sea awaits for all to hear!

First staged in 2024 to sold-out school audiences, *A Sea of Stories* once again invites students on a musical voyage through Southeast Asia. Step into the enchanting world of music and myths with the musicians from the Open Score Project with exciting narration by Jamil Schulze and Lian Sutton from Off Root Theatrics.

Drawing from the vibrant cultures of Southeast Asia, this magical experience will showcase musical traditions and stories from Indonesia, Thailand and Vietnam. As we sail across the waters that connect us through three different folktales, *A Sea of Stories* invites you to rest your ear against the spiral of the conch—experience the tapestry of sounds, learn about our traditional stories and instruments, and celebrate the interconnectedness of the region through the universal language of music and storytelling.



THE WORLD OF OUR OWN



Theatre
Puppetry

THE WORLD OF OUR OWN

By The Finger Players



THE
FINGER
PLAYERS

十
指
帮

Recommended For:

Upper Primary – Lower Secondary

Upper Primary

25 – 28 Aug, Tue – Fri, 10am

Lower Secondary

27 & 28 Aug, Thu & Fri, 2.30pm

Duration: 1hr 10mins, no intermission

Language: English

Venue: Esplanade Annexe Studio

Ticket Price: \$27

Turn to page 22 for booking details.

Most days, PENG comes home to an empty house, but not today. On this day, he is not alone, with him is MOOD MANAGER (BETA)—a sensitive, sensing, synergizing in-body mechanical part.

With MOOD MANAGER (BETA) around, is PENG still alone or is PENG just...lonely? He has no clue; all he knows is this—nobody hears what's inside his head and nobody knows what's inside his heart. But perhaps things will change today.

The World of Our Own is a non-verbal puppetry performance about loneliness in young people.

This work aims to provide a safe space for young people and their peers and adult carers, starting conversations about emotions and strategies to cope with loneliness.

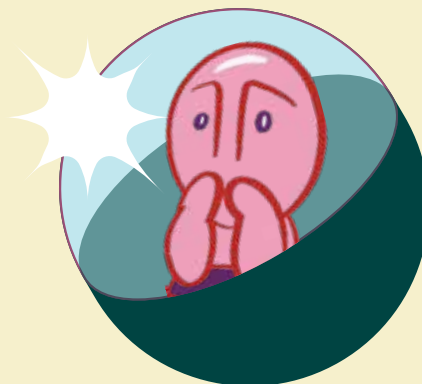
Learning Objectives

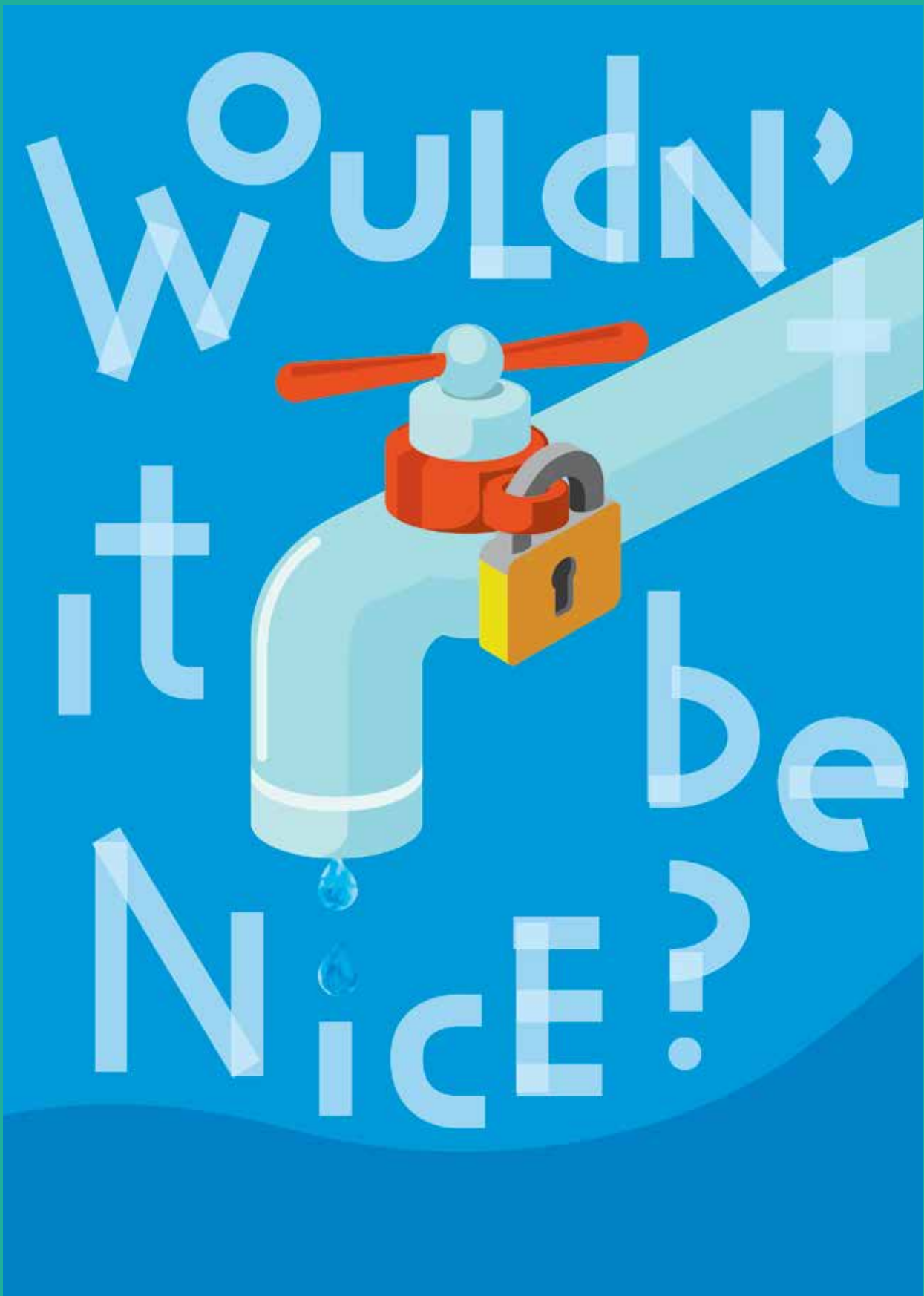
- Inspire young imaginations to create a world for themselves and gain confidence in building a world of their own.
- Explore and practise strategies for recognising, expressing and regulating emotions in a safe and supportive environment.
- Foster connections among young people by discovering shared experiences and co-developing strategies to cope with feelings of loneliness.
- Cultivate an appreciation for puppetry and demonstrate how the arts can be applied meaningfully to daily life as tools for expression, reflection and communication.

For Educators

As a companion programme, there is a workshop for *The World of Our Own* specially for educators.

For more information, visit www.esplanade.com/fyi.





Forum Theatre

WOULDN'T IT BE NICE?

By Drama Box



Recommended For: Secondary – Tertiary

20 – 23 Oct, Tue – Fri, 2.30pm

Duration: 2hr, no intermission

Each performance includes a post-show discussion.

Language: English

Venue: Esplanade Recital Studio

Ticket Price: \$27

Turn to page 22 for booking details.

It is 2030 in Singapore. First the floods came, followed by a prolonged period of drought and contamination to our water supply. There is a shortage of clean water and an energy crunch. Water has become a controlled good, persistent power outages are disrupting the lives of Singaporeans, and there are strains in the social order.

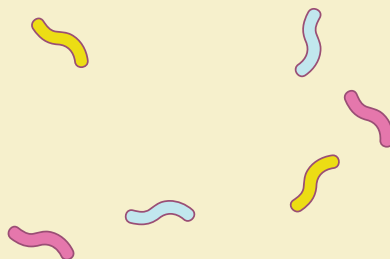
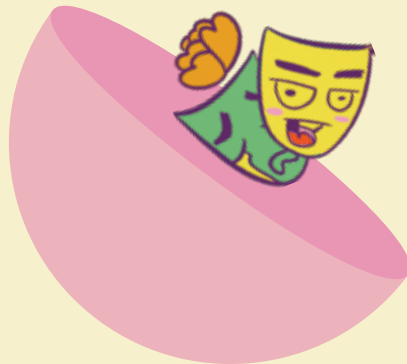
How will water be distributed? In times of crisis, how do we organise resources, and learn to trust one another? How do we communicate with, understand and accommodate each other?

This forum theatre play challenges students to rethink their values and priorities, and to consider perspectives coming from different concerns and needs. There is no model answer and no prescribed ways to deal with the problem. Instead, through dialogue, discussion and exchange, students get to devise new strategies and try out various solutions, preparing them to participate and take action in life.

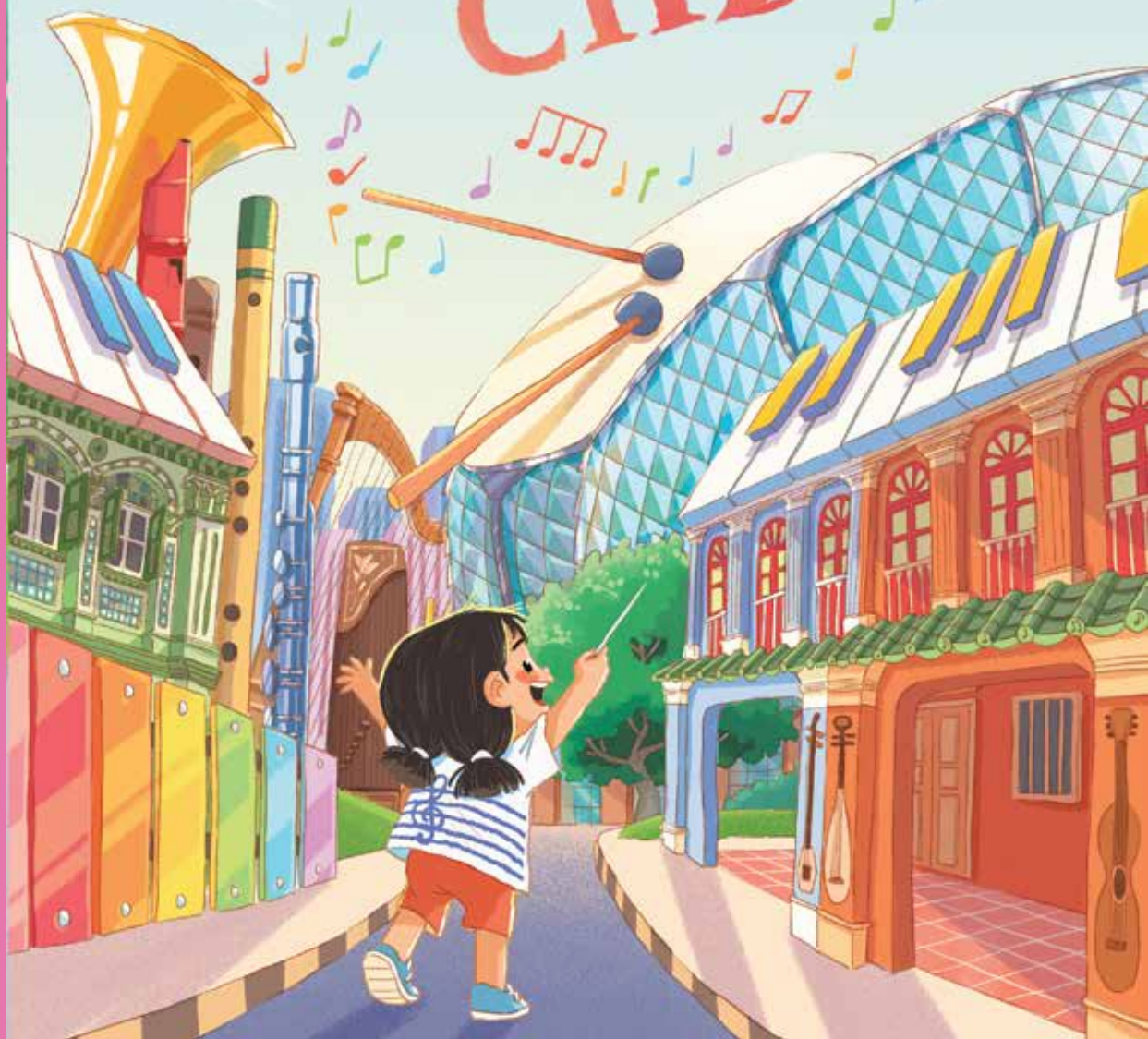
Wouldn't It Be Nice? was first produced in 2012 by Drama Box for IPS Prism: An Immersive Arts Experience, presented by Institute of Policy Studies of the National University of Singapore.

Learning Objectives

- Explore issues related to civic responsibility.
- Develop a greater appreciation for competing priorities and challenges faced in decision-making and policy formation.
- Consider multiple perspectives and communicate effectively.
- Encourage critical thinking and analytical skills.



The Musical City



Audio-Visual Book

THE MUSICAL CITY

By Phang Kok Jun

Recommended For: Primary

Jan – Dec

Language: English

Book Price: \$15 nett

This programme is presented in the form of a printed illustrated book which includes links to a digital experience.

A dog goes 'woof!', a car goes 'vroooooom', a plane goes 'shweeeeshhzoom', but what sound does a building make?

Pei is a curious girl who always wonders about the sounds things make. In this audio-visual-illustration book, readers follow the journey of Pei as she interacts with different buildings in the heart of Singapore. They will join Pei in learning about the building's historical and architectural elements through music and sound. Readers are also invited deeper into the experience by engaging in mini drawing activities related to each building they encounter.

Part-music and part-social studies, young learners will get to learn about instruments and music from different cultures, as well as the many heritage buildings nestled within the historical heart of Singapore.

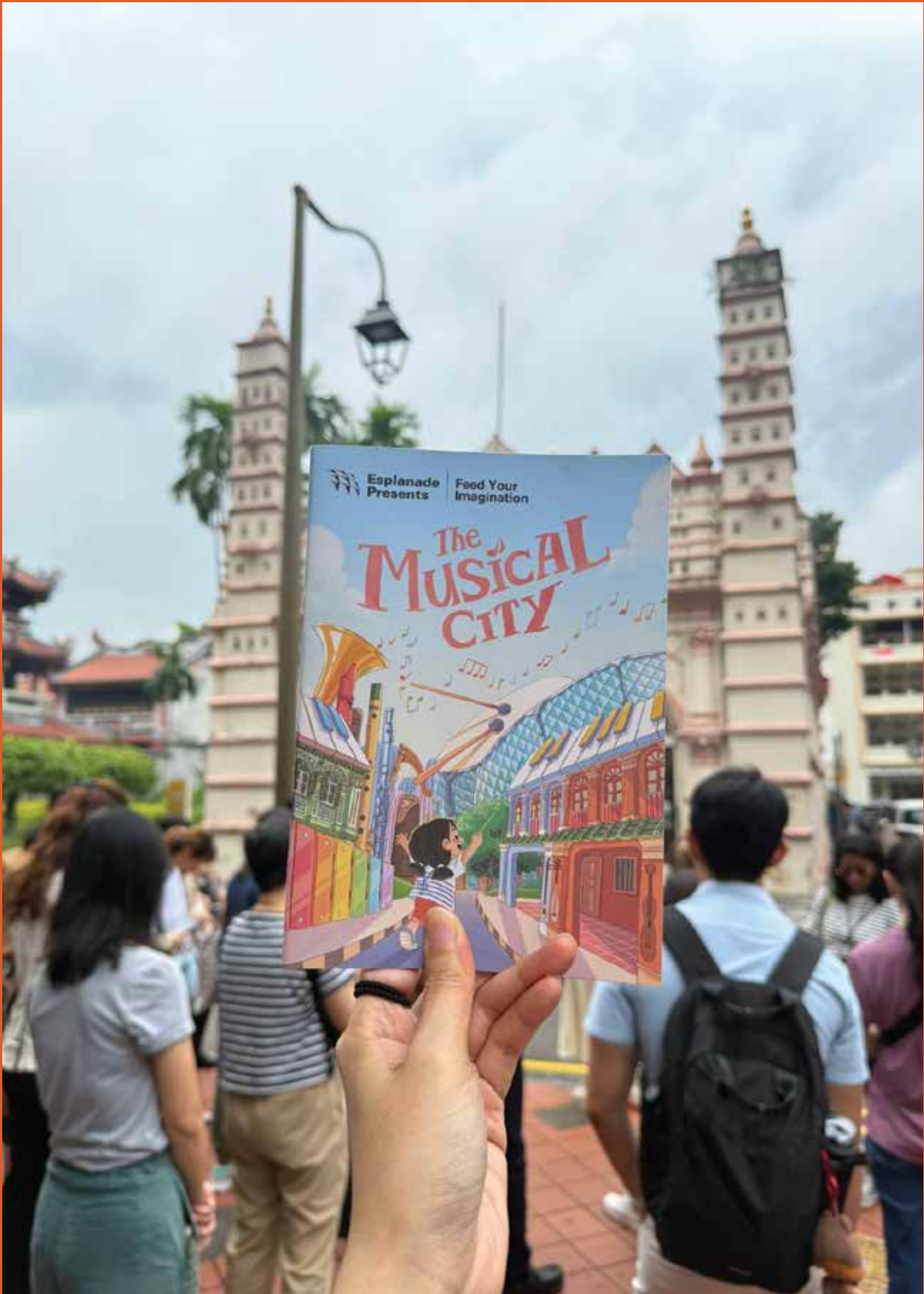
As a companion programme, schools can book for *The Musical City Student Tour* to experience the story live. Refer to page 20 for more details.



Learning Objectives

- Recognise historical buildings in Singapore and understand their significance.
- Identify musical instruments and musical features associated with different cultures.
- Understand the connection between music, history and culture.
- Develop an appreciation for Singapore's cultural heritage.





Learning Journey

THE MUSICAL CITY STUDENT TOUR

By Phang Kok Jun, ARTABLE
and Mark Nicodemus Tan



Recommended For: Primary 3 - 6

May 2026 – Mar 2027

Language: English

Venue: Various Locations (Esplanade & Offsite)

Ticket Price: \$35

Turn to page 22 for booking details.

What sound does a building make?

The Musical City Student Tour is an immersive arts-based learning journey that brings together music, architecture and Singapore's cultural history. Inspired by composer Phang Kok Jun's illustrated book, this tour brings the pages to life as students follow Pei, a curious girl who loves to listen to the world around her, on a journey through key heritage landmarks including Telok Ayer Green, Thian Hock Keng Temple, Nagore Dargah, Victoria Theatre and Concert Hall, and Esplanade – Theatres on the Bay.

At each site, Pei and the guides will introduce students to the stories and sounds that shape our city, revealing how melodies and rhythms can mirror the character of a place. Through listening, observation and simple creative activities, students uncover the connections between music, history and culture.

More than just a learning journey, *The Musical City Student Tour* is an arts experience that invites students to see and hear Singapore anew.

Learning Objectives

Through the tour, students will:

- Explore how music reflects and connects with Singapore's multicultural heritage.
- Discover how architecture, environment and sound can inspire musical ideas.
- Recognise and experience key heritage landmarks in Singapore's Civic District and understand their historical and cultural significance.
- Engage their senses through listening, observation and simple creative activities that encourage imagination and reflection.
- Develop a deeper appreciation for the ways music and places can shape our understanding of history, culture and identity.

Note: The programme may be adjusted/cancelled in the event of heavy rain, thunder and lightning.



BOOKING INFORMATION

Live Performances

Day Out! @ Esplanade	\$30/ticket
The Musical City Student Tour	\$35/pax
All other programmes	\$27/ticket

Audio-Visual Book

The Musical City (Suited for cohort)	\$15nett/book
---	---------------

Educators' Development Workshop	\$20/ticket
--	-------------

Ticket price excludes SISTIC booking fee, unless otherwise stated.

All bookings for F.Y.I productions are to be done via www.esplanade.com/fyi.

SUBSIDIES AND COMPLIMENTARY TICKETS*

Schools

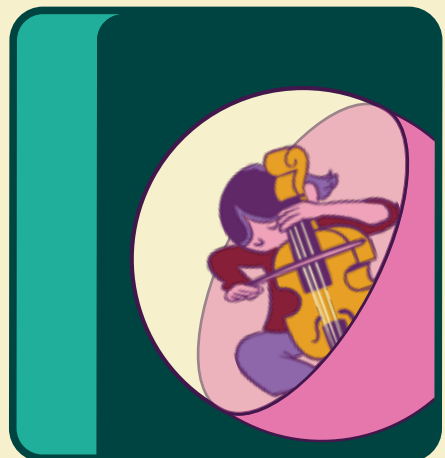
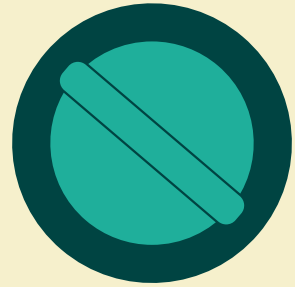
For every 20 tickets purchased per production, one complimentary ticket will be issued. Schools can use the Tote Board Arts Grant to subsidise up to 50% of the ticket price.

SPED Schools

For every 10 tickets purchased per production, two complimentary tickets will be issued. SPED schools can use the Tote Board Arts Grant to subsidise up to 70% of the ticket price.

Complimentary ticket offer is only available if the purchases are made in a single transaction for the same production.

***The Tote Board Arts Grant and complimentary tickets are not applicable for *The Musical City Student Tour* and the Educators' Development Workshop.**



GROUP VISITS/ LEARNING JOURNEYS

Esplanade Tour

A **guided tour** to various performance venues and locations within the arts centre.

Provides students with an insight into Esplanade's architecture and history as well as interesting nuggets of information about the various venues.

Education and Career Guidance (ECG) Tour

A guided tour that gives students a deeper understanding about the **various roles and careers** in the arts, in addition to learning about the various performance venues.

Suitable for: Primary students & up
Duration: 45mins – 1hr 15mins approx
Cost: \$20 (standard); \$10 (concession)

For all Tours, please note that access into the performing venues is subject to availability.



Esplanade Trail

A specially developed **self-guided trail** for students, to be facilitated by the school's accompanying educator.

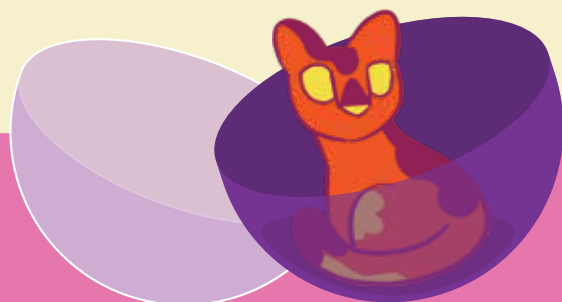
Learn more about Esplanade, its role as Singapore's national performing arts centre and the visual arts spaces within the centre. The trail also consists of an on-site digital component to complement the trail experience.

Prior to the visit, educators will receive a copy of:

- A **Trail Worksheet** with information and activities.
- An **Educator's Guide** with notes & suggested activities to extend the learning experience in the classroom.

Suitable for: Primary & Secondary students
Duration: 1hr – 1hr 30mins approx.
Cost: Free, pre-registration required.

To register, email us at education@esplanade.com.





Music

SONGSMITH: SINGAPORE SONGS AND SONGWRITING

By Inch Chua, Metronome Collective
and Esplanade – Theatres on the Bay

Recommended For: Lower Secondary

28 – 30 Jul, Tue – Thu
1pm & 4.30pm

Duration: 1hr, no intermission
Language: English
Venue: Esplanade Concert Hall

By Invite Only

Inch is a Singaporean award-winning multidisciplinary artist of music, theatre, technology and immersive experiences with an eclectic sonic palette. With music as her first love, Inch rallies a special line-up of guest musicians and vocalists. Songsmith is made up of singer-songwriters, musicians, and a producer who will take students on a sonic and visual journey through Singaporean songs and songwriting – from its humble beginnings to the here and now.

This programme aims to provide students with a fresh perspective and a deeper understanding of Singaporean music, the art of music-making, and the power of storytelling.

Commissioned in 2023 by National Arts Council in partnership with Ministry of Education as part of Performing Arts-Based Learning (PABL).

OTHER PROGRAMME HIGHLIGHTS



12 – 25 Mar

Various timings and locations

March On is Esplanade's annual festival for young audiences, a vibrant celebration of the stories and experiences that matter to them. With a sense of playfulness and wonder, the festival also supports artists in crafting meaningful and imaginative works for young audiences.

www.esplanade.com/marchon



Tiger Tale (School Show)

By Barrowland Ballet (UK)

12 Mar, Thu, 2.30pm

Esplanade Theatre Studio

Recommended Level: Primary - Lower Secondary

Something wild is prowling. A wild tiger crashes into a tired family's life, unleashing chaos, laughter and wonder in this thrilling, up-close dance adventure.



Chotto Desh (School Show)

By Akram Khan Company (UK)

24 & 25 Mar, Tue & Wed, 3pm

Singtel Waterfront Theatre at Esplanade

Recommended Level: Primary 2 & above

Chotto Desh, a heart-warming story of a boy trying to find his place in the world. Blending Kathak and contemporary dance with an exquisite mix of spoken text, dreamlike animation, visuals and specially composed music, *Chotto Desh* is an enchanting and poignant dance-theatre experience not to be missed.



Little Bozu & Kon Kon (School Show)

By Omusubi Productions & Monkey Baa Theatre Company (Australia)

24 Mar 2026, Tue

9.30am & 11am

Esplanade Recital Studio

Recommended Level: Preschool – Lower Primary

A tender tale of friendship, acceptance and self-discovery inspired by Japanese folklore and told through enchanting puppetry.

LIMELIGHT®



CHIJ Secondary School Concert Band



Tanjong Katong Secondary School Choir



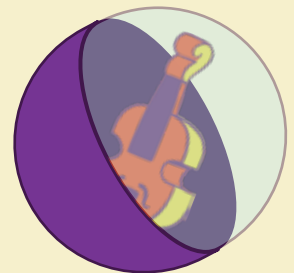
Unity Secondary School Symphonic Band

Feb - Nov, Various timings
Esplanade Concert Hall

Limelight is a series that gives some of the best school choirs and bands in Singapore an opportunity to perform at the Esplanade Concert Hall. Through this series, we hope to inspire excellence in performance among schools by offering them another platform to showcase their musical abilities to the public.

In 2026, the series will feature performances by Unity Secondary School Symphonic Band, Tanjong Katong Secondary School Choir, Catholic High School Choir and more.

Recommended for: Primary & above
www.esplanade.com/limelight





Roald Dahl's *The BFG* (School Show)

By A Royal Shakespeare Company, Chichester Festival Theatre, Singapore Repertory Theatre, Esplanade – Theatres on the Bay and Roald Dahl Story Company production (UK, Singapore)

29 Apr, Wed

5 - 6 May, Tues - Wed

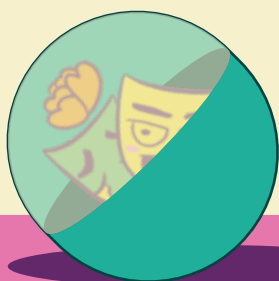
8 May, Fri

2.30pm

Esplanade Theatre

Recommended Level: Primary 2 & above

Roald Dahl's The BFG comes alive on stage in Singapore – a magical new production filled with big dreams and giant adventures.



Voices Series



Close Harmony

By The King's Singers (UK)

14 Mar, Sat, 7.30pm

Esplanade Concert Hall

Recommended Level: Secondary & above

GRAMMY and Emmy award-winning a cappella group The King's Singers take to the stage for an evening of stylistically varied harmonies.

Classics



NHK Symphony Orchestra Special Concert

By NHK Symphony Orchestra, Tatsuya Shimono, Kyohei Sorita (Japan)

29 Apr, Wed, 7.30pm

Esplanade Concert Hall

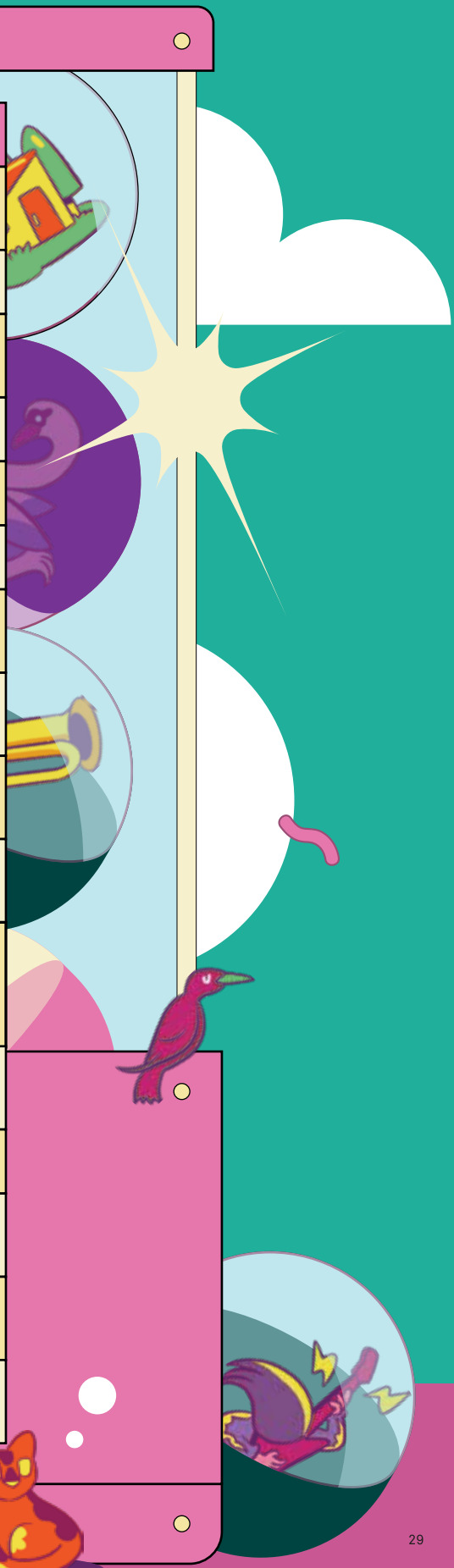
Recommended Level: Secondary & above

Japan's leading orchestra NHK Symphony returns after 24 years, featuring acclaimed pianist Kyohei Sorita in his Singapore debut.

CALENDAR OVERVIEW

DATES	PRODUCTION TITLE
FEB – NOV	LIMELIGHT SERIES <i>(Various School Bands/Choirs)</i>
12 MAR	TIGER TALE (SCHOOL SHOW)
14 MAR	CLOSE HARMONY BY THE KING'S SINGERS
24 MAR	LITTLE BOZU & KON KON (SCHOOL SHOW)
24 & 25 MAR	CHOTTO DESH (SCHOOL SHOW)
29 APR, 5 - 6 & 8 MAY	ROALD DAHL'S THE BFG (SCHOOL SHOW)
29 APR	NHK SYMPHONY ORCHESTRA SPECIAL CONCERT
19 – 21 MAY	DAY OUT! @ ESPLANADE <i>(May Edition)</i>
20 – 23 JUL	ERROR 403: THIS SCHOOL IS MINE
22 – 24 & 27 – 31 JUL	A SEA OF STORIES: MUSIC AND MYTHS FROM SOUTHEAST ASIA
29 – 31 JUL	SONGSMITH:SONGSMITH: SINGAPORE SONGS AND SONGWRITING <i>(By Invite Only)</i>
25 – 28 AUG	THE WORLD OF OUR OWN
20 – 23 OCT	WOULDN'T IT BE NICE?
28 – 30 OCT	DAY OUT! @ ESPLANADE <i>(Oct Edition)</i>
JAN – DEC	THE MUSICAL CITY <i>(Audio-Visual Book)</i>
MAY 26 – MAY 27	THE MUSICAL CITY STUDENT TOUR

VENUE	RECOMMENDED LEVEL
Esplanade Concert Hall	Primary & above
Esplanade Theatre Studio	Primary - Lower Secondary
Esplanade Concert Hall	Secondary & above
Esplanade Recital Studio	Preschool – Lower Primary
Singtel Waterfront Theatre	Primary 2 & above
Esplanade Theatre	Primary 2 & above
Esplanade Concert Hall	Secondary & above
Various locations around Esplanade	Lower Primary
Esplanade Annexe Studio	Secondary – Tertiary
Esplanade Recital Studio	Primary
Esplanade Concert Hall	Lower Secondary
Esplanade Annexe Studio	Upper Primary – Lower Secondary
Esplanade Recital Studio	Secondary – Tertiary
Various locations around Esplanade	Upper Primary
<i>Audio-Visual Book</i>	Primary
Various Locations (Esplanade & Offsite)	Primary 3 – 6



CONTACT US

F.Y.I, School Programmes and Learning Journeys

Esplanade Children & Youth Team
6828 8323
education@esplanade.com

Booking of Shows and Ticketing Matters

Esplanade Box Office
6828 8389
boxoffice@esplanade.com

For more information about programmes for the young, check out www.esplanade.com/schools.

FEED YOUR IMAGINATION (F.Y.I)



Feed Your Imagination (FYI) offers primary and secondary school students a series of music, dance and drama performances by established local arts groups. It aims to educate by imparting knowledge about the arts, provoking thought and encouraging audience participation. Each *FYI* performance includes a resource guide for teachers to use before and/or after the performance, a performance guide for each student as well as the opportunity to interact with the artists/creative team during the show.

www.esplanade.com/fyi



ESPLANADE OFFSTAGE



Your all-access backstage pass to the performing arts at Esplanade – Theatres on the Bay.

Offstage is your insider's guide to Singapore and Asian arts and culture, demystified for newcomers but also offering perspectives that are in-depth or off the beaten track.

Produced by Esplanade, Singapore's national performing arts centre, *Offstage* is for everyone, including families, schools and researchers.

Bring the arts into the classroom with resources that have been created with students and teachers in mind.

Find out more at

www.esplanade.com/offstage/schools.

For other arts-related content, check out

www.esplanade.com/offstage.



To get regular updates about programmes for students and educators, email education@esplanade.com to subscribe to our educator's mailing list.

About Esplanade – Theatres on the Bay

As Singapore's national performing arts centre, Esplanade – Theatres on the Bay believes in making the arts accessible to everyone.

Esplanade aims to increase awareness of the arts by exposing our young to the performing arts and educating them in the different art forms that are presented at the centre all year round. This includes offering opportunities and space for the young to express their own creativity and imagination.

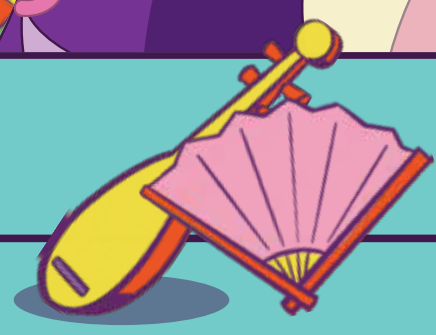
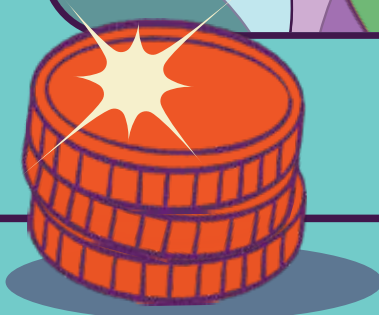
Students can also learn more about the various arts forms online through resources provided on the Family and Schools section on Esplanade Offstage which further enhance language acquisition and cultural exploration.



Photo Credit: Bryan van der Beek



2026



UEN: 192052065 Information correct at time of print.

Principal Sponsors

A&O SHEARMAN



Bloomberg

Deloitte

Supporting Sponsor



#EsplanadeSG #WonderHere