



# **Pre-Event Guide**

**(Families):**

**PLAYtime! 2025**

**Koko The Great**

15 – 31 Aug 2025

45mins, no intermission

Esplanade Theatre Studio

## Accessibility features of Koko The Great



Koko The Great is a **Relaxed Performance**.



The letters RP indicate that you will be watching a Relaxed Performance.

In a Relaxed Performance, you can:

- Move around and make noise if you need to
- Enter and exit the performance venue whenever you need to

In a Relaxed Performance, there will be no:

- Strobe lights
- Sudden darkness or blackouts
- Sudden loudness or surprising noises

This guide will inform you if there are any exceptions to the usual expectations.

## Accessibility features of Koko The Great (continued)



There is a **Calm Space** available for use if you need a quieter place.

The Calm Space is just outside the performance venue.

You may exit the Calm Space whenever you are ready to return to the performance venue.



If the performance gets too loud, you may ask an Esplanade usher for an **ear protector**.

Wearing the ear protector will make the sounds softer.

## Accessibility features of Koko The Great (continued)



An **Assistive Listening** system is available for this performance venue.



Hearing aid users with a Telecoil-enabled programme can benefit from the system provided.



An Esplanade Usher will assist you with the set-up of the system.

To utilise this system, please:

- Arrive 30mins before the performance
- Approach an Esplanade usher at the venue upon arrival

## About the performance venue



You will be watching a performance titled **Koko The Great**.



You will be watching Koko The Great at **Esplanade – Theatres on the Bay**. Some people also call it Esplanade.



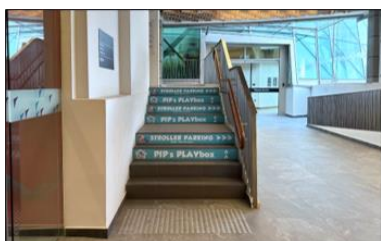
You will be watching the performance at the Esplanade Theatre Studio.

You will need to go to Level 4 to find the Esplanade Theatre Studio.

## Before the performance



You can go to the washroom before you watch the performance.



The washroom is on Level 4.

To get to the washroom, you may:

- Go up the stairs
- Then, turn left



There will be children's washrooms available. The children's washrooms are opposite PIP's PLAYbox.



In the washroom, there is a hand dryer. It makes a loud noise when someone uses it. The noise will stop after a while.

## Before the performance (continued)

Before you can watch the performance, you must buy a ticket to watch Koko The Great.



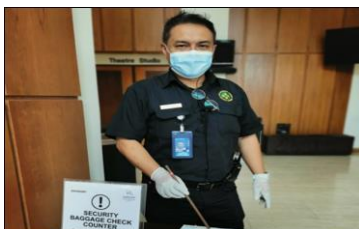
The ticket will tell you information like:

- Where to go to watch the performance
- Date of the performance
- Time the performance is happening



Before you go into the Theatre Studio, Esplanade ushers will greet you at the door.

The ushers are dressed in blue.



If you have a bag, a security officer will check your bag.

## Inside the Theatre Studio



The Theatre Studio can get a little dark. Some lights will be turned on to help you see.



If you need help, an usher can show you where to sit.

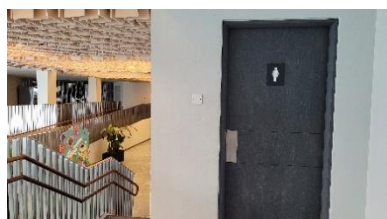


## Movement during the performance



During the performance, you can:

- Move around
- Dance on the spot



You may also use the washroom during the performance.

The washroom is outside.



An usher can show you the way.



You should not move when the Theatre Studio is dark.

You may not be able to see clearly in the dark.

## About the performance



Koko The Great is about an imaginative boy called **Koko**.

Koko uses his imagination to create his daily adventures.



Sometimes, Koko and his friends go on adventures together.



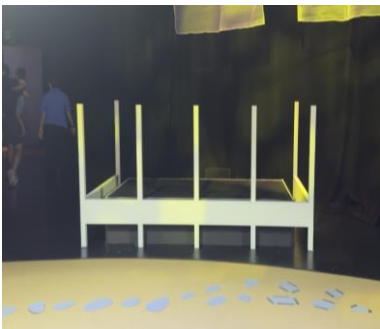
His friends are:

- Bernadette (girl in green shorts)
- Mei Li (girl in white shorts)



Koko's new adventure takes him to the place where the river flows to join the sea.

## What you will see in Koko The Great



In the performance space you will see:

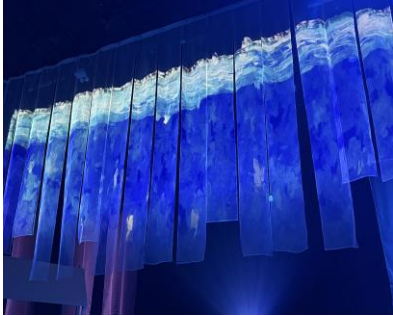
- A village and a river
- A tree by the river
- A jetty (platform) at the river



The actors will use these white boats during the performance.

You should not touch these white boats.

## What you will see in Koko The Great (continued)



There will be different pictures and lights projected on the mesh around you.



You may want to leave the performance space if it feels too bright or distracting.

You may leave the Theatre Studio or go to the Calm Space. That is okay.

## Light effects during the performance



There will be different light effects during the performance.



It will be darker sometimes during the performance.

You may want to leave the performance space if it gets too dark.



You may leave the Theatre Studio or go to the Calm Space. That is okay.

## Sound effects during the performance



There will be different sound effects during the performance.

You may want to leave the performance space if it gets too noisy or distracting.



You may leave the Theatre Studio or go to the Calm Space. That is okay.

## What you will do in Koko The Great



You will be asked to help the actors collect fruits such as mango, sukun and jambu during the performance.

These fruits are not real. They are made of wood.

You can choose to join in if you want to.

You may want to leave the performance space if it gets too noisy or distracting.



You may leave the Theatre Studio or go to the Calm Space. That is okay.



## What you will do in Koko The Great (continued)



You will see a big blue cloth pass over you during the performance.

You can touch the cloth, but please do not pull it.

You may want to leave the performance space if this gets distracting.



You may leave the Theatre Studio or go to the Calm Space. That is okay.



## After the performance



The lights will turn on after the performance ends.

The theatre will be bright again.

People will leave the theatre when the performance is over.

You can leave with your grown-up.

The theatre might get crowded.

You should wait for your turn to leave.

## After the performance (continued)



An usher will give you an activity sheet after the performance has ended.

The activity sheet is about the performance, Koko The Great.

You can complete the activity sheet any time after the performance.

You can do it on your own or with a grown-up.

## About the performers



An actor is someone who acts.

An actor can pretend to be:

- A person
- An animal
- A thing in the story



Hafiz is an actor.

Hafiz plays a character named **Koko**.



Shaw En is an actor.

Shaw En plays a character named **Mei Li**.

## About the performers (continued)



Elizabeth is an actor. Elizabeth plays a character named **Mama**.

Mama is Koko's mother.



Elizabeth also plays one more character in the performance.

Elizabeth plays a character named **Bernadette**.

Bernadette is Koko's friend.

## About the performers (continued)



Fadhil is an actor.

Sometimes, when an actor is unable to act during a performance, he will take their place.

When that happens, he will play the role of Koko.







Liz is an actor.

Liz takes turns to play different characters if another actor is unable to act during a performance.

Sometimes, she plays different characters like:

- Mama
- Bernadette
- Mei Li

## About the performers (continued)

	A musician is someone who plays live music.
	<p>Stan is a musician.</p> <p>You will see Stan play instruments like:</p>
	A metallophone called gender.
	A xylophone called tingklik.
	A keyboard.

## About the performers (continued)



A drum called kendang.



A drum called darbuka.

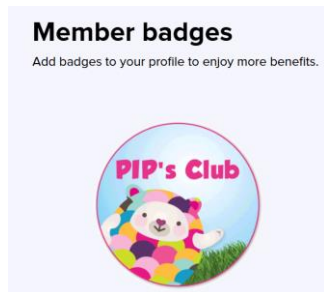


Stan will also play some sound effects using her computer.

## See you soon at Esplanade!



You may sign up for PIP's Club membership to be informed of more shows like Koko The Great.



You may sign up for PIP's Club membership on our Esplanade website:  
[www.esplanade.com/pipsclub](http://www.esplanade.com/pipsclub)

To find out more about Accessibility at Esplanade, you may visit our website at  
[www.esplanade.com/accessibility](http://www.esplanade.com/accessibility)

You may also find us on our social media platforms:

- Instagram: [@EsplanadeSingapore](https://www.instagram.com/EsplanadeSingapore)
- Facebook: [@EsplanadeSG](https://www.facebook.com/EsplanadeSG)
- TikTok: [@EsplanadeSG](https://www.tiktok.com/@EsplanadeSG)