



Pre-Event Guide: March On 2025 Goldfish

13 & 14 Mar, 2.30pm [For Schools]

Fri, 14 Mar, 7.30pm

Sat, 15 Mar, 11am & 3pm

Sun, 16 Mar, 11am
(1hr, no intermission)

Singtel Waterfront Theatre at Esplanade

No part of this material may be reproduced in any other form without permission from The Esplanade Co Ltd.

Going to Esplanade



- You are going to a place called **Esplanade – Theatres on the Bay**. Some people also call it Esplanade.
- You will be watching a performance at Esplanade. The title of the performance is Goldfish.
- This is what Esplanade looks like.

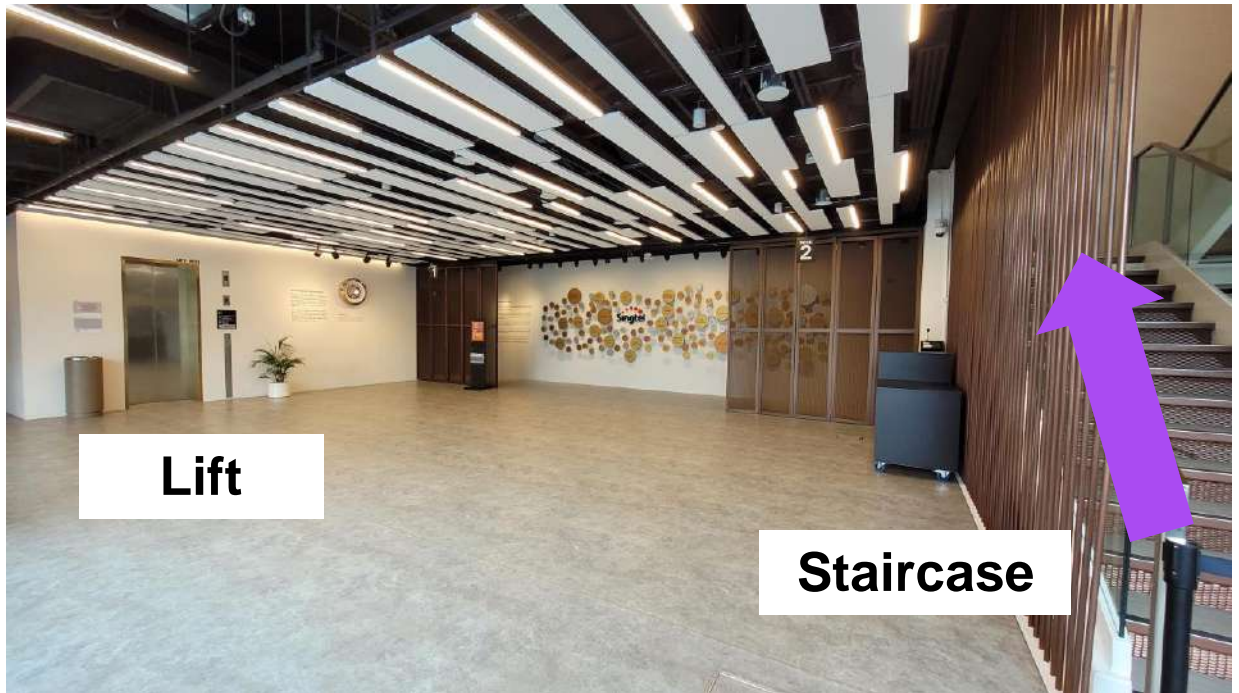
Accessibility features for Goldfish



This is a **Relaxed Environment** performance

- Moving during the performance is alright. You can walk around or sit down while the performance is happening.
- If you need to use the washroom during the performance, that is alright. An usher can show the way to the washroom.
- After using the washroom, the usher can help you return to your seat.
- Sometimes, it may be necessary to leave the performance area to find a quiet place to calm down. It is alright to return to the performance when you are ready.

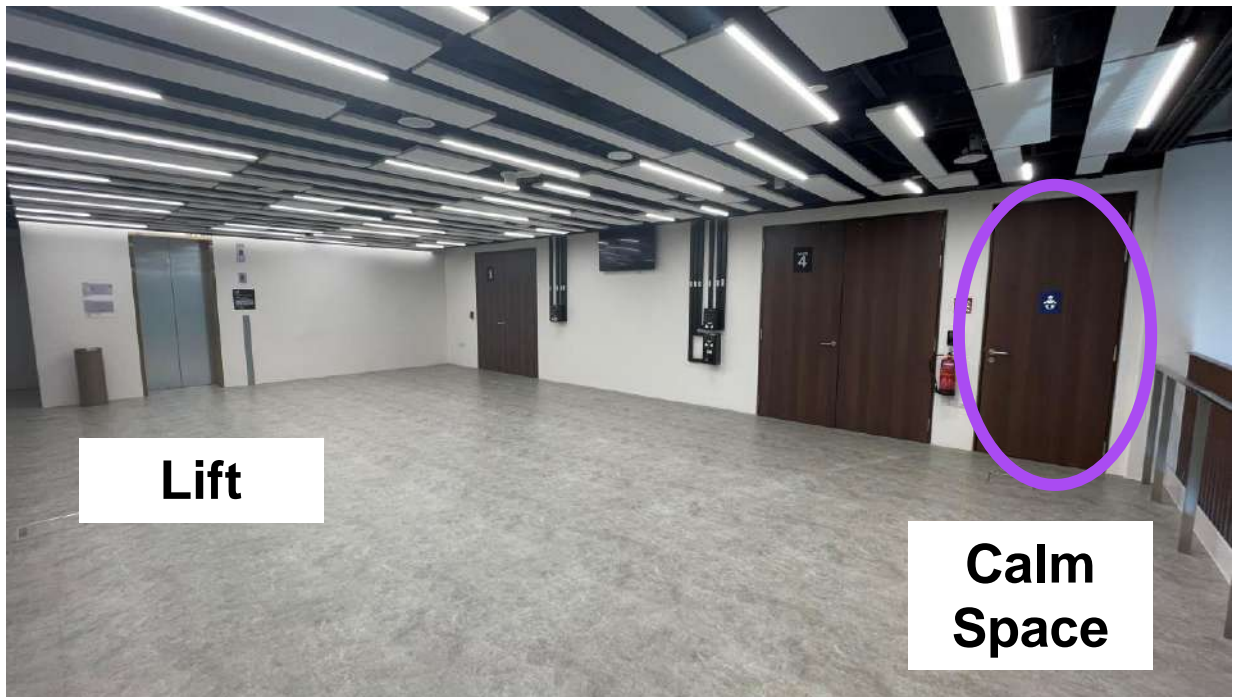
Directions to the Calm Space



Singtel Waterfront Theatre Foyer, Level 1

- If you need some quiet or need to step away from the performance, you can go to the Calm Space.
- The Calm Space is at the Level 2 Foyer.
- You can ask an usher to show you the way to the Calm Space.
- If you are at the performance space on Level 1, you can take the staircase or lift up to Level 2.

Directions to the Calm Space



Singtel Waterfront Theatre Foyer, Level 2

- If you are at the performance space on Level 2, the Calm Space is located at the Foyer on Level 2.
- You can ask an usher to show you the way to the Calm Space.

Calm Space



- This is the Calm Space.
- You can rest on the chairs and use any of the items provided at the Calm Space if you need to.
- When you are ready, you can go back into the theatre to enjoy the rest of the performance.

Assistive Listening



- An Assistive Listening system is available for this venue.
- Hearing aid users with a Telecoil-enabled programme can benefit from the system provided.
- Please arrive at the venue 30 minutes before the performance.
- You can approach an usher at the venue and they can assist with the setup.

What is Goldfish about?

- Goldfish is a live performance with music and puppets.
- It starts with a storyteller and a puppet show.
- The storyteller tells a story about a big flood.
- Suddenly there is a loud noise off stage.
- 2 evacuation workers run in and say the performance must stop because a real flood is happening outside.



- The stage becomes very busy and noisy.
 - People move boxes.
 - There is pushing and shouting.
 - Loud alarm sounds can be heard.
- Slowly, the storyteller and the workers start working together to face the flood.



- The theatre turns into an emergency centre.
- An emergency centre is a safe place for people during an emergency.
- The storyteller still wants to finish her story, but she cannot.
- She is interrupted by the 2 evacuation workers and the emergency flood outside.



Characters in Goldfish

Actors



An actor or actress is a person who plays a role and pretends to be a character in a performance.

Sometimes, an actor can play more than one character.

You will see a few actors in the performance.

Actor 1



This is Mayu.

She is an actress.

She acts as the storyteller.

Actor 1



Mayu uses objects and shadows to tell stories in the performance.

Actor 2



This is Marcus.

He is an actor.

He acts as a worker in an
evacuation centre.

Actor 3



This is Rino.

She is an actress.

She acts as a manager in an
evacuation centre.

Actor 3



Rino also acts as the Goldfish.

Shadow puppets



The performance will have shadow puppets.

A puppeteer will control the puppets.

Shadow puppets



For shadows to appear, the room will have to be dim.

There will be some light.

The light will make the puppets' shadows appear on a screen.

Lights



During the performance, lighting will be used to help create a mood or feeling.

There will be

- flashing lights
- sudden lighting changes
- low lighting
- moments of black outs

The lights can change in colour and intensity.

Lights



There will be objects in the theatre that will reflect light. They are

- mirrors
- goggles
- a disco ball

The light may reflect into your eyes.

The characters in the performance will also point torches around the space.

Sound effects



In the performance, sound effects will be used to tell a story. You will hear sounds like

- background noise
- sudden noise
- overlapping voices
- loud voices

Sound effects



Loud sound effects will also be used in a scene where the stage changes to an evacuation centre to help create a sense of chaos and emergency.

You will hear sound effects such as

- whistles
- sirens

If it gets too noisy or uncomfortable for you, you can go to the Calm Space for some quiet.

Fog



In the performance, a fog machine will be used to create special effects.

Fog is a thick mist created by a machine.

Fog helps us to see light sources more clearly.

The fog will cover the stage to create this effect.

Audience interaction



The actors might talk to you directly and mention any sounds they hear.

The Manager will ask someone to help set up something on stage.

You do not have to reply if the actors talk to you, but you can if you like.

Audience interaction



At one moment, the Storyteller is kicked off the stage by the other characters. She moves into the audience seats and keeps telling her story.

Later, two characters sit with the audience!

**See you soon at
Esplanade.**



Find us on    | [esplanade.com](https://www.esplanade.com)

Esplanade is a charity and not-for-profit organisation. Help us bring the joy and inspiration of the arts to different communities, including the underserved.