



“Art is a great unifying force. It is one place where people can forget their ideologies and differences, and sit down to enjoy a good show.”

— A. Sachithanathan, *Arts Administrator*  
*TributeSG: A. Sachithanathan on Esplanade Offstage*

“Art is life, life is art. To live and to ask questions [have] become the most important things in my life.”

— Amanda Heng, *Visual Artist*  
*TributeSG: Amanda Heng on Esplanade Offstage*



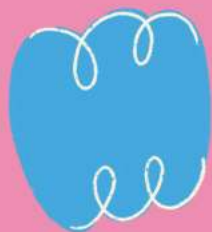
“Arts education has a very important place in all schools in Singapore. It is part and parcel of what we call holistic education for our students. You will never find a school, any school in Singapore, which does not offer art and music lessons to its students. So I think fundamentally we need to acknowledge that it is not a luxury. It is central to one’s being, and central to one’s ability to discern who he or she is, and that whole identity formation.”

— Mary Seah, *Principal, School of the Arts Singapore (SOTA)*  
*Making a Scene: Arts Education, Interrupted on Esplanade Offstage*



# CONTENT

A MESSAGE FOR YOU	4
THE F.Y.I EXPERIENCE	6
PRODUCTION CATEGORIES	7
PRODUCTIONS AT A GLANCE	8
BOOKING INFORMATION	9
DAY OUT! @ ESPLANADE By Royalusion and Various Artists	10 & 11
INTERNATIONAL FRIENDSHIP DAY By The Necessary Stage	12 & 13
A SEA OF STORIES: MUSIC AND MYTHS FROM SOUTHEAST ASIA By Open Score Project	14 & 15
THE LESSON By Drama Box	16 & 17
THE FEELINGS FARM Directed by Edith Podesta, written by Amanda Chong and music by Julian Wong	18 & 19
THE MUSICAL CITY By Phang Kok Jun	20 & 21
INSIDE THE MUSIC: FREEDOM IN JAZZ By Nicole Duffell Quintet	22 & 23
EDUCATORS' DEVELOPMENT WORKSHOPS	24
GROUP VISITS	25
OTHER PROGRAMME HIGHLIGHTS	26 – 28
CONTACT DETAILS	29



# We Welcome You to *Feed Your Imagination*

Youths today are navigating a world that is increasingly interconnected yet much more divided than ever. As adults, it can sometimes be hard to find the words to encourage them to be brave about their journey of exploration when we ourselves struggle to stay afloat amidst the volatility and uncertainty.

As Singapore's national performing arts centre, we speak the language of the arts. Like you, we know the arts can be a powerful lens through which we bring into new focus how we see ourselves, the world around us, where we have come from and where we can go from here. With our artists, we discover and articulate through performance the beauty of the world around us in its rich diversity and endless possibilities. Most urgently for our youths, *Feed Your Imagination (F.Y.I)* present arts education performances that inspire hope and optimism for our collective future.

Through our lineup this year, we hope to offer you some comfort, courage and a good time at our theatres. Our cultural presentations build a bridge between gulfs that divide, our theatre presentations provide safe spaces for students to interrogate and rehearse solutions to some of the challenges we face in our daily lives while the diverse genre and thematic offerings by some of Singapore's top artists seek to inspire students to embark on their own lifelong relationship with the arts.

Our work in arts education continues from strength to strength with your support. Thank you for being part of our journey, and we cannot wait to welcome you and your students to Esplanade or online through our digital programmes. We look forward to an enriching and inspiring year through the arts at Esplanade!

Sincerely,

**The Children & Youth Team  
Esplanade – Theatres on the Bay**



# Snapshots of selected programmes from Feed Your Imagination (F.Y.I) 2023



**Nuri Terbang Malam: Malay Music in Singapore through Time**  
By Syed Ahmad, Jeremiah Choy and Orkes Nuri



**Kita Thaka Thom: When Jazz meets Carnatic Music**  
By Varsha



**Re: Assembly**  
By Drama Box



**O/Aural Waves: Red Hill**  
By Kamini Ramachandran, Ferry and Irfan Kasban



**Survivor Singapore**  
By The Necessary Stage



**The Zodiac Race**  
By The Finger Players and Ding Yi Music Company



# THE F.Y.I EXPERIENCE

An *F.Y.I* experience is more than just a performance for your students to attend. Set in a professional venue, and working with quality artists, Esplanade seeks to programme relevant works that are engaging and meaningful for students.

## 1 Educational Production

A curated performance designed for students + facilitation (e.g interactive activities, post-show discussion)

## 2 Performance Guide

For the full *F.Y.I* experience, we also provide a **Resource Pack** which consists of an educator's guide and a student's guide.

- **Educator's guide:** Resource material to help prepare students for the *F.Y.I* experience or to extend their learning beyond the performance.

*Emailed to educators who book into the show.*

- **Student's guide:** A guide with information as well as activities related to the performance they will be watching.

*Given out to students on-site for live performances at Esplanade. For digital programmes, this will be emailed to educators, to be given out before the screening of the performance.*

## 3 Digital Programmes

Digital offerings are available for selected programmes. The following are available for students to access in class or as part of home-based learning:

- *The Musical City* (pg. 20)
- *Inside the Music: Freedom in Jazz* (pg. 22)

*Refer to the respective programme page for more details.*

## 4 Optional Esplanade Tour or Trail

Schools have the option to choose to go on an Esplanade Tour (guided) or an Esplanade Trail (self-guided).

*Tours are limited, on a first-come, first-served basis. Access to venues depends on availability.*



# PRODUCTION CATEGORIES

Based on the learning objectives, *F.Y.I* productions can be classified under these categories.

## Character Development



Productions under this category address ethical and social-emotional issues that are fundamental to the growth of a person of good character.

Key objectives include equipping students with tools to cultivate strong values through self-reflection, engender students with a sense of self-worth, and encourage students to understand, evaluate and appreciate multiple perspectives.

Examples of topics include those related to self-esteem, identity, prejudice, and family and social relationships.

## Cultural Understanding



Productions under this category are representative of art forms from various cultures and traditions, ranging from music, dance and drama.

Key objectives include heightening students' cultural awareness and engaging with the world they live in. Through exposure to these art forms, students will begin to understand and appreciate their own and/or others' histories, traditions and cultures.

## Citizenship



Productions under this category address community, national and/or global issues, in line with emerging 21st century competencies.

Key objectives include equipping students with the tools to cultivate concerned, informed and responsible citizens through the subject matter discussed within the art form.

Examples of topics include those related to the preservation of culture and heritage, exploring ideas related to national identity and learning more about important historical events and their impact.

## Genre Exposure





Productions under this category expose students to genre-specific art forms in a supported environment, and are scaffolded for novices.

Key objectives include heightening students' awareness and enhancing their knowledge of a genre-specific art form, while cultivating an appreciation for the aesthetics, practice and expressions of the form.

Some examples of genre-specific art forms include jazz music, contemporary dance and traditional forms of puppetry.

# 2024 PRODUCTIONS AT A GLANCE



	Dates	Production	Artists
Term 2	15 – 16 & 20 – 21 May	Day Out! @ Esplanade*	Royalusion and Various Artists
	25 – 28 Jun	International Friendship Day	The Necessary Stage
Term 3	17 – 18 Jul	A Sea of Stories: Music and Myths from Southeast Asia	Open Score Project
	17 – 19 & 23 – 25 Jul	The Lesson	Drama Box
	Aug – Dec	The Musical City 	Phang Kok Jun
Term 4	22 – 25 Oct	The Feelings Farm	Director: Edith Podesta, Playwright: Amanda Chong Composer: Julian Wong
Year Round	Jan – Dec	Inside the Music: Freedom in Jazz** 	Nicole Duffell Quintet

 Digital Programmes

\*Day Out! @ Esplanade consists of a performance, workshop and a venue tour.

\*\*Inside the Music: Freedom in Jazz is part of the Digital Performing Arts Based Learning (PABL) Pilot Programme, commissioned by the National Arts Council.

Information about the *Feed Your Imagination (F.Y.I)* programme is also available at [www.esplanade.com/fyi](http://www.esplanade.com/fyi).



# BOOKING INFORMATION

## LIVE PERFORMANCES

**\$27** /TICKET



## EDUCATORS' DEVELOPMENT WORKSHOPS

**\$20** /TICKET



## DIGITAL PERFORMANCES

*Digital programmes are suited for cohort viewing.*

### The Musical City

**\$15** NETT/BOOK

*Min. purchase of 30 copies*

### Inside the Music: Freedom in Jazz

Basic package:

**\$2,500** /PACKAGE



Single ticket:

**\$15** /TICKET

*Each package enables up to five classes of students to watch the programme concurrently.*

Package / ticket price excludes SISTIC booking fee, unless otherwise stated.

All bookings for *F.Y.I* productions are to be done via [www.esplanade.com/fyi](http://www.esplanade.com/fyi).



## SUBSIDIES AND COMPLIMENTARY TICKETS

### SCHOOLS

For every **20 tickets purchased** per production, **one complimentary** ticket will be issued.

Schools can use the Tote Board Arts Grant to subsidise up to 50% of the ticket price.

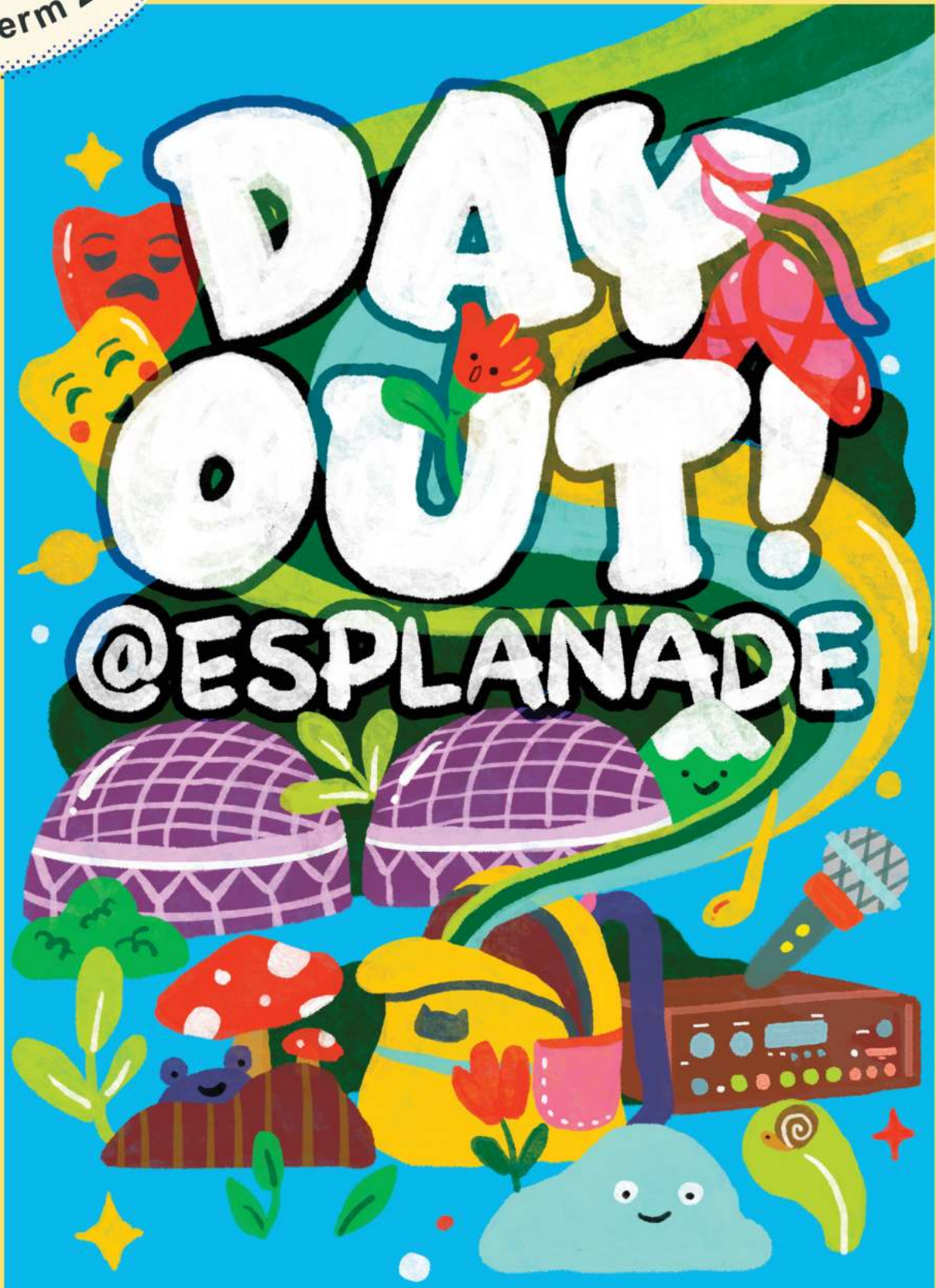
Applicable to Primary and Secondary Schools, Junior Colleges and Centralised Institutes.

### SPED SCHOOLS

For every **10 tickets purchased** per production, **two complimentary** tickets will be issued.

SPED schools can use the Tote Board Arts Grant to subsidise up to 70% of the ticket price.

Complimentary ticket offer is only available if the purchases are made in a single transaction for the same production.



## Learning Objectives

- Identify the distinct characteristics of various Indian dance styles
- Understand how different musical techniques can evoke various emotions
- Participate in group singing and experience the layering of sounds
- Explore a performance venue and understand how the design of a space can affect the sound within

Multi-disciplinary

# Day Out! @ Esplanade

By Royalusion and  
Various Artists

**15 – 16 May**

Wed – Thu

**9.30am – 11.30am**

**20 – 21 May**

Mon – Tue

20 May

1st Session

**9.30 – 11.30am**

2nd Session

**2.30 – 4.30pm**

21 May

**9.30 – 11.30am**

Duration

**2 hrs**

Language

**English**

Venue

**Various locations  
around Esplanade**

Imagine being able to watch a performance, participate in a workshop, and explore a performance venue—all in a single day? Join us for *Day Out! @ Esplanade*, an exciting programme filled with musical experiences you would not want to miss!

Immerse yourself in a captivating dance performance by Royalusion at the DBS Foundation Outdoor Theatre and discover the evolution of Bollywood dance styles while picking up a move or two yourself. Next, dive into the art of vocal expression in an exclusive workshop and demonstration as you experience how music and the human voice have the power to evoke and express a diverse spectrum of emotions! You will also get to join us on a tour of our performance venue, gaining a deeper appreciation for the meticulous design of this world-class performing arts centre.

Recommended For:  
Primary



Turn to page 9 for booking details.

# INTERNATIONAL



# FRIENDSHIP DAY

Images from 2015 staging of *International Friendship Day*

## Learning Objectives

- Explore issues related to integration between Singaporean and non-Singaporean students
- Develop a sense of empathy and compassion for others
- Develop the ability to consider and incorporate multiple perspectives for effective communication
- Acquire empowerment skills to enact positive changes

Theatre

# International Friendship Day

An Esplanade Co-Production  
by The Necessary Stage

the  
necessary  
stage

It's International Friendship Day at MPSS but friendship seems to be the last thing on the students' minds.

While the foreign students Adi, Anton and Liqin are questioning what to showcase at their booths and why there isn't one for the local students, the Drama Club boys are unhappy about them not putting any effort towards the much anticipated Singapore Youth Festival (SYF).

Meanwhile, Carys is facing pressure at home for losing her spot as the school's top Maths student.

Will she lose her top spot to an international scholar?  
Will the Drama Club boys get the foreigners to join in the chorus?  
Will Adi get the booth of his choice?

Join us at *International Friendship Day* with the MPSS students as we discuss cross-cultural differences in this interactive theatre piece!

*International Friendship Day* was first commissioned by Singapore Kindness Movement in 2015, and was restaged as part of *Peer Pleasure 2016* and as an online interactive experience under Esplanade's *Feed Your Imagination 2021*.

**25 – 28 Jun**

**Tue – Fri**

1st Performance  
**2.30 – 4pm**

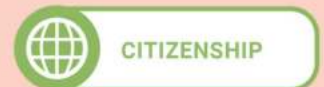
2nd Performance  
**5 – 6.30pm**

Duration  
**1hr 30mins**

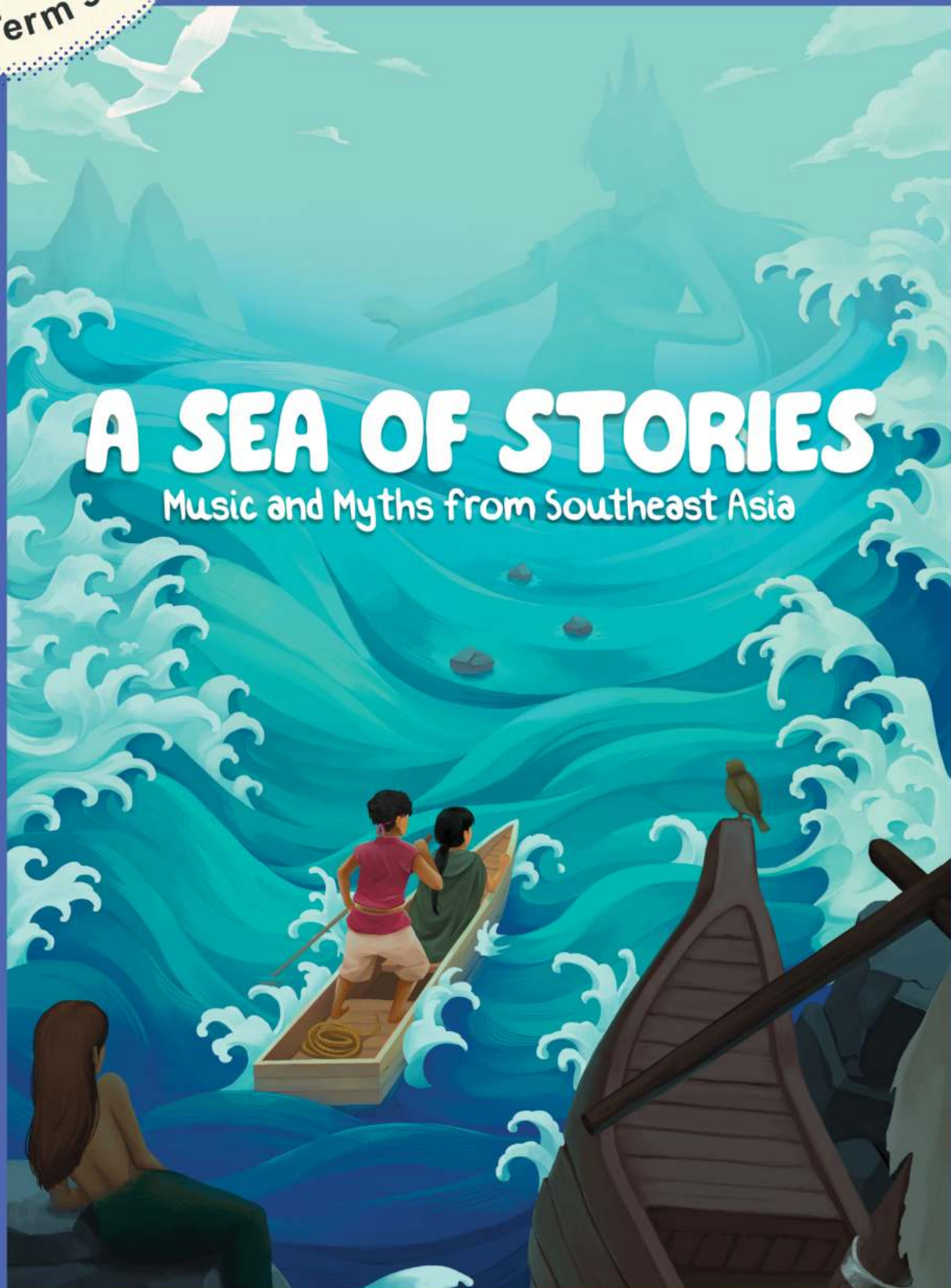
Language  
**English**

Venue  
**Esplanade  
Recital Studio**

Recommended For:  
Secondary – Tertiary



Turn to page 9 for booking details.



# A SEA OF STORIES

Music and Myths from Southeast Asia

## Learning Objectives

- Discover folklores from Vietnam, Indonesia and Thailand told through a musical narrative
- Experience music from Southeast Asia and learn the names of ethnic instruments
- Develop an awareness and appreciation for the diversity of musical cultures

Music

# A Sea of Stories: Music and Myths from Southeast Asia

An Esplanade Commission  
By Open Score Project



OPEN SCORE PROJECT

**17 – 18 Jul**  
**Wed – Thu**

1st Performance  
**10 – 11am**

2nd Performance  
**2.30 – 3.30pm**

Duration  
**1hr**

Language  
**English**

Venue  
**Esplanade  
Recital Studio**

What lies within the conch shell? Lift it to your ear!  
The magical music of the sea awaits for all to hear!

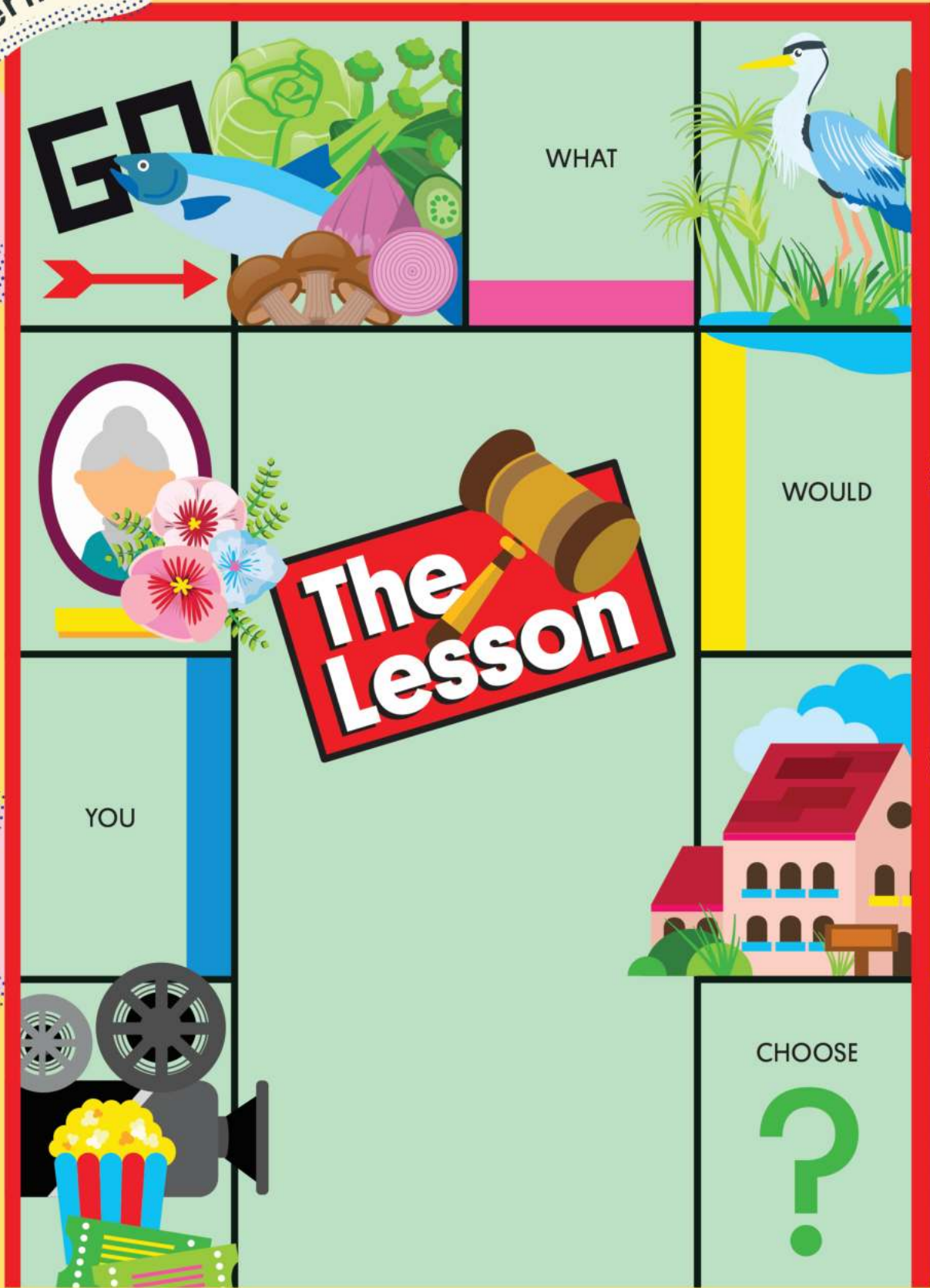
Step into the enchanting world of *A Sea of Stories: Music and Myths from Southeast Asia* with musicians from the Open Score Project, and narration by Benjamin Chow. Drawing from the vibrant cultures of Southeast Asia, this magical experience will showcase musical traditions and stories from Indonesia, Thailand and Vietnam. As we sail across the waters that connect us through three different folktales, *A Sea of Stories* invites you to rest your ear against the spiral of the conch—experience the tapestry of sounds, learn about our traditional stories and instruments, and celebrate the interconnectedness of the region through the universal language of music and storytelling.

Join us on this voyage as we explore the hidden treasures nestled within the heart of our Southeast Asian traditions.

Recommended For:  
Primary



Turn to page 9 for booking details.



### Learning Objectives

- Explore issues related to the governance of a country
- Develop a greater appreciation for competing priorities and challenges faced in decision-making and policy formulation
- Consider multiple perspectives when exploring solutions and encourage effective communication with others to resolve conflict
- Foster independent and critical thinking



Theatre

# The Lesson

By Drama Box

戏剧盒  
drama box

Week 1

**17 – 19 Jul**  
Wed – Fri

Week 2

**23 – 25 Jul**  
Tue – Thu

1st Performance  
**2.30 – 4.30pm**

2nd Performance  
**5.30 – 7.30pm**

Duration  
**2hrs**

Language  
**English**

Venue  
**Esplanade  
Annexe Studio**

A new train station is planned for the estate, but there is little space left, and something must be demolished. What should stay and what should go?

In this participatory theatre production, facilitators will take students through a series of activities as they learn about the costs, risks, stakes, and sacrifices that come with creating a community.

Through this experience, students will be given the opportunity to explore how they value the different spaces in their own country, what their priorities and concerns are, as well as what democracy is about—the power and choice of their vote and their role and responsibility as an individual living in our society.

Director: Han Xuemei  
Playwright: Li Xie



Recommended For:  
Secondary – Tertiary

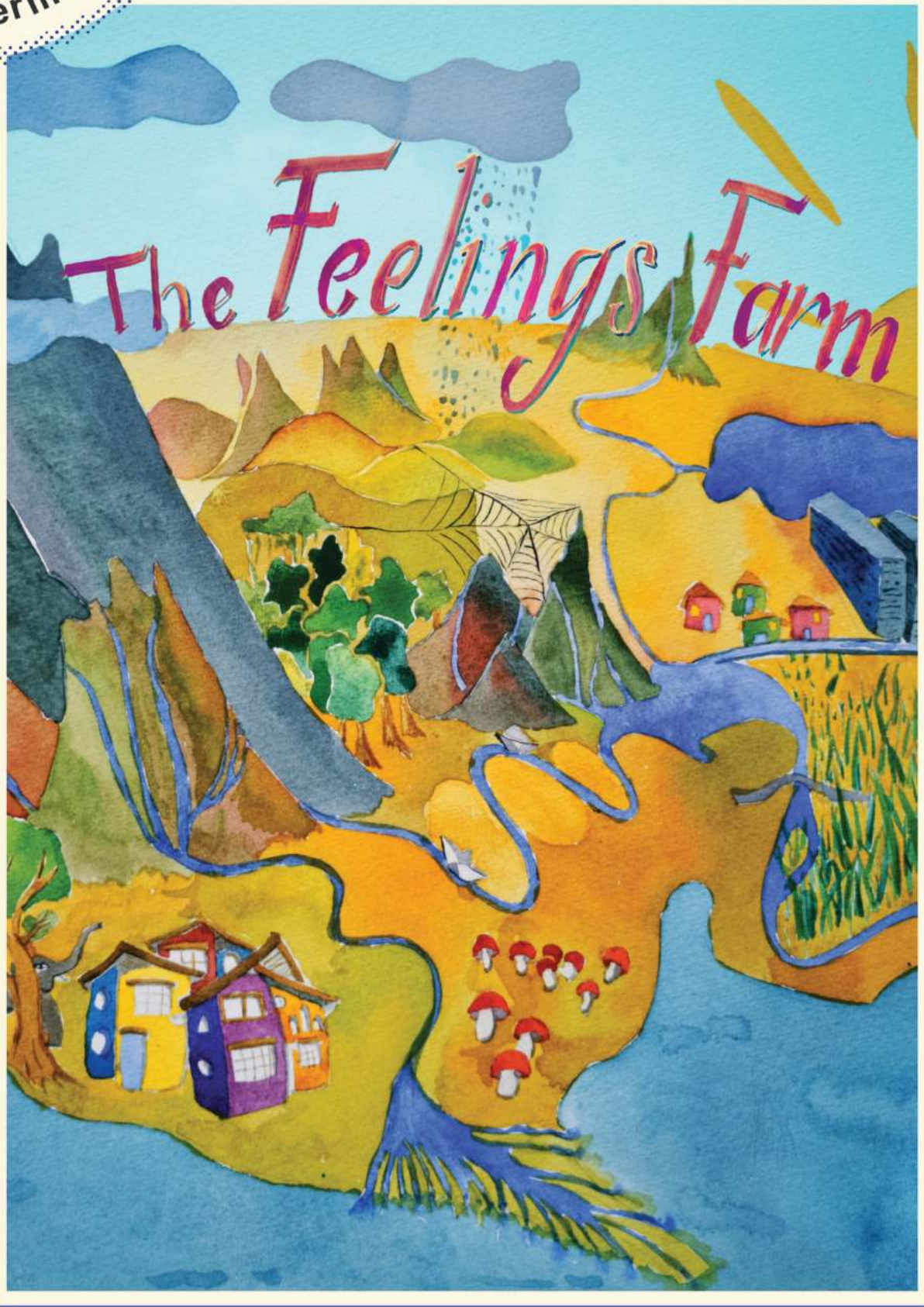


**CHARACTER  
DEVELOPMENT**



**CITIZENSHIP**

Turn to page 9 for booking details.



### Learning Objectives

- Identify and articulate the different feelings one might experience such as joy, sadness, and worry
- Experience and appreciate the power of musical theatre in bringing a story to life
- Discover positive ways of regulating and expressing emotions in difficult situations

Theatre

# The Feelings Farm

Directed by Edith Podesta, written by  
Amanda Chong and music by Julian Wong

Welcome to the Feelings Farm  
where feelings bloom and grow.  
Pay attention to their whispers,  
they might show you where to go...

On a trip to Kranji, three children find themselves lost on *The Feelings Farm* where emotions are shifting landscapes they must learn to journey through, both together and alone. Guided by the mysterious Cloud, they tumble through the Jungle of Joy, brave the Field of Fear, sail across the Swamp of Sadness, and explore other familiar feelings. Come along for a magical adventure that will surprise and move you.

*The Feelings Farm* uses music, movement, poetry and multimedia to help children name and understand emotions with compassion. The play draws from real experiences of children in Singapore and hopes to give children and adults alike the language to have honest conversations about our feelings.

*The Feelings Farm* was first produced by Esplanade – Theatres on the Bay and presented in 2021 as part of *March On*.

Producer: Shridar Mani (The Public Space)

## For Educators

As a companion programme, there is a development workshop for *The Feelings Farm* specially for educators.

To find out more, refer to [page 24](#).



**22 – 25 Oct**  
Tue – Fri

22 Oct  
**3 – 4.15pm**

23 – 24 Oct  
1st Performance  
**10.30 – 11.45am**

2nd Performance  
**3 – 4.15pm**

25 Oct  
**10.30 – 11.45am**

Duration  
**1hr 15mins**

Language  
**English**

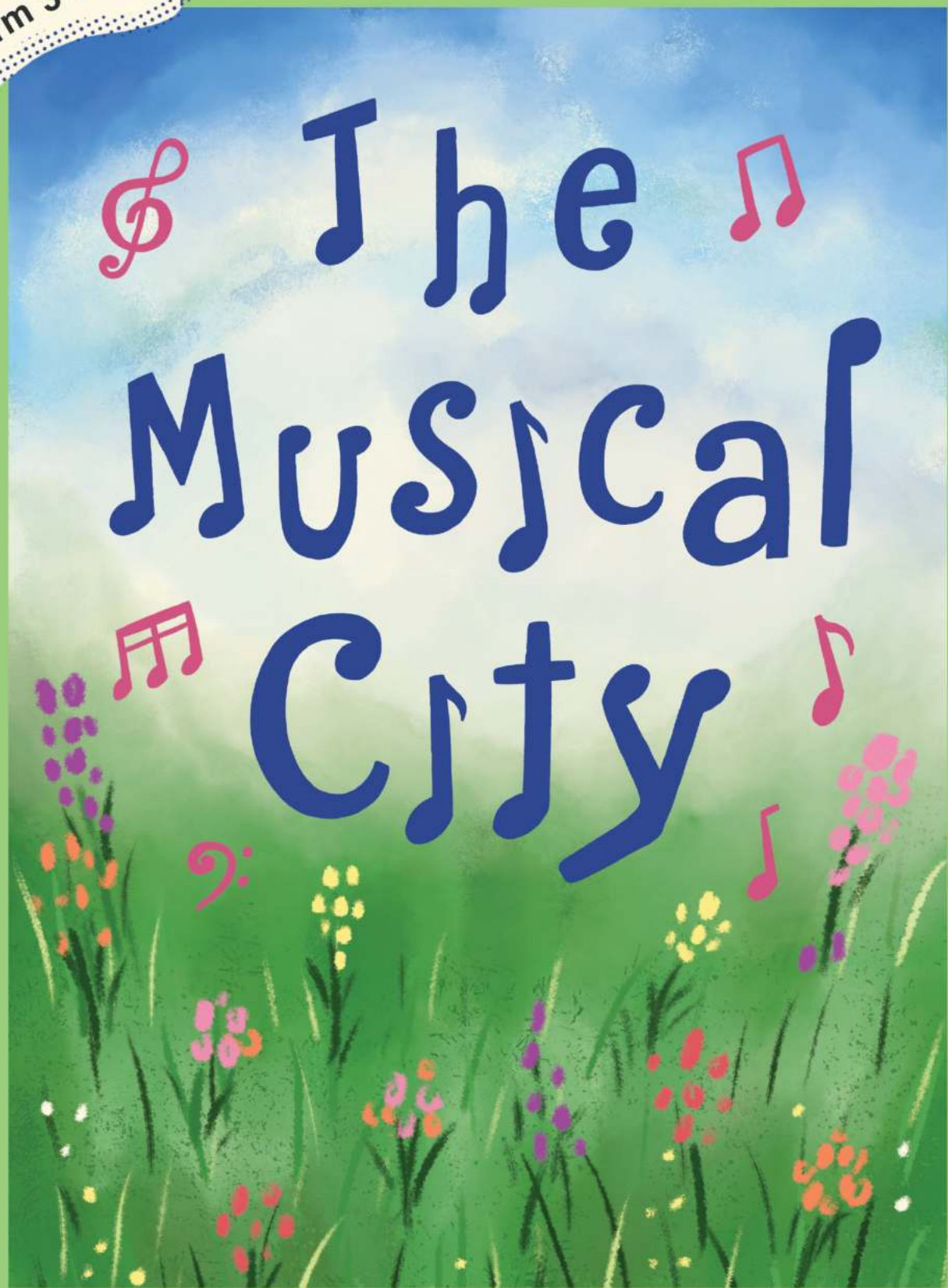
Venue  
**Singtel Waterfront  
Theatre at  
Esplanade**

Recommended For:  
Primary - Lower Secondary



**CHARACTER  
DEVELOPMENT**

Turn to [page 9](#) for booking details.



### Learning Objectives

- Recognise historical buildings in Singapore and understand their significance
- Identify musical instruments and musical features associated with different cultures
- Understand the connection between music, history and culture
- Develop an appreciation for Singapore's cultural heritage

Multi-disciplinary



# The Musical City

An Esplanade Commission  
By Phang Kok Jun



*A dog goes 'woof!', a car goes 'vroooooom',  
a plane goes 'shweeeeshhzoom',  
but what sound does a building make?*

Pei is a curious girl who always wonders about the sounds things make. In this audio-visual-illustration book, readers follow the journey of Pei as she interacts with different buildings in the heart of Singapore. They will join Pei in learning about the building's historical and architectural elements through music and sound. Readers are also invited deeper into the experience by engaging in mini drawing activities related to each building they encounter.

Part-music and part-social studies, young learners will get to learn about instruments and music from different cultures, as well as the many heritage buildings nestled within the historical heart of Singapore.

## Aug – Dec

This programme is presented in the form of a printed illustrated book which includes links to a digital experience.

Language  
**English**



### For Educators

As a companion programme, there is a walking tour for *The Musical City* specially for educators.

To find out more, refer to **page 24**.

Recommended For:  
**Primary**



**GENRE  
EXPOSURE**

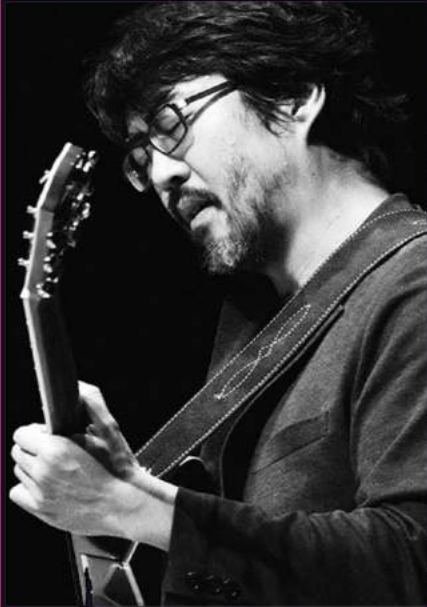


**CULTURAL  
UNDERSTANDING**



**CITIZENSHIP**

Turn to **page 9** for booking details.



# Inside the music

## freedom in jazz

### Learning Objectives

- Gain a basic understanding of the history and development of jazz
- Recognise various instruments and their roles in the creation of jazz music
- Identify and practice basic jazz concepts such as the major and minor pentatonic scales, rhythm and syncopation, and call and response
- Appreciate how jazz concepts are used in the creation of jazz music
- Gain a basic appreciation of how cultural instruments may be incorporated into jazz music

Music



# Inside the Music: Freedom in Jazz

By Nicole Duffell Quintet

**Jan – Dec**

The programme will be viewed via **SISTIC Live** and will be available online with unlimited access within the quarter<sup>^</sup>.

Duration  
**1hr 15mins**

Language  
**English (with English subtitles)**

Venue  
**Online**

**^Notes:**  
Bookings slots are based on a quarterly basis.

Each booking will enable unlimited viewing for the quarter.

**Jan – Mar**  
(booking closes 15 Mar)

**Apr – Jun**  
(booking closes 14 Jun)

**Jul – Sep**  
(booking closes 13 Sep)

**Oct – Dec**  
(booking closes 13 Dec)

Jazz is the ultimate expression of melody, rhythm, and improvisation—by any instrument or voice. In the centre of the creation of jazz music is what we call the “blues”.

*Inside the Music: Freedom in Jazz* is an introduction to jazz music. Performed and facilitated by some of Singapore’s leading jazz musicians, students will be introduced to a brief history of the music genre that has spread to different corners of the world today, its unique socio-political history, and its connection with local musicians and the music scene.

Through performances recorded live at Esplanade, students will also find out more about essential jazz elements such as the major and minor pentatonic scales, rhythm and syncopation, the blues scale, and call and response. This programme is aimed at students and teachers with some preceding knowledge of music but can be appreciated by students at any level of music learning.

This programme is commissioned by the National Arts Council as part of the Digital Performing Arts-Based Learning (PABL) Pilot Programme.

Recommended For:  
Lower Secondary



**GENRE EXPOSURE**



**CULTURAL UNDERSTANDING**

Turn to page 9 for booking details.



## Educators' Development Workshops

These teacher development workshops are designed to offer useful introductory tips and how-to tools for teaching an artform or concept in the classroom. It can be experienced as a standalone activity, or as a complement to the *F.Y.I* performance. These intimate workshops encourage hands-on participation, and teachers should take the opportunity to interact with the artist facilitator, as well as each other to discuss possible challenges and solutions.

### The Feelings Farm Workshop

By SOMAYOKE

14 Aug, Wed, 3pm  
Esplanade Bay Room



A workshop for educators where we cultivate awareness of our own emotions and how it can support children in navigating their feelings.

**Duration: 2hrs**

### The Musical City Walking Tour

16 Aug, Fri, 3pm  
Various locations



Go on a tour to uncover the rich history of Singapore's iconic buildings through music and gain insight into the composer's creative process for crafting musical tracks that encapsulate the cultural essence of each location.

**Duration: 2hrs**



# Group Visits



## Esplanade Trail

A specially developed **self-guided trail** for students, to be facilitated by the school's accompanying educator.

Learn more about Esplanade, its role as Singapore's national performing arts centre and the visual arts spaces within the centre. The trail also consists of an on-site digital component to complement the trail experience.

Prior to the visit, educators will receive a copy of:

- a **Trail Worksheet** with information and activities
- an **Educator's Guide** with notes & suggested activities to extend the learning experience in the classroom

Suitable for  
**Primary & Secondary students**

Cost  
**Free, pre-registration required**

Duration  
**60 – 90 mins approx.**

To register, email us at [education@esplanade.com](mailto:education@esplanade.com).

## Esplanade Tour

A **guided tour** to various locations within the arts centre.

Provides students with an insight into Esplanade's architecture and history as well as interesting nuggets of information about the various venues.

Take a peek into the auditoriums of Esplanade Concert Hall, Theatre and other front-of-house spaces.

For Esplanade Tours, please note that access into the performing venues is subject to availability.



Suitable for  
**Primary students & up**

Cost<sup>^</sup>  
**\$20 (standard) ; \$10 (concession)**

<sup>^</sup>Esplanade tours under the F.Y.I series are offered complimentary as part of the F.Y.I experience.

Duration  
**45 – 60mins approx.**



# Other Programme Highlights for Students

## LIMELIGHT®

**Feb – Aug**  
**7.30pm**  
**Esplanade Concert Hall**

*Limelight* is a series that gives some of the best school choirs and bands in Singapore an opportunity to perform at the Esplanade Concert Hall. Through this series, we hope to inspire excellence in performance among schools by offering them another platform to showcase their musical abilities to the public.

Recommended for:  
**Primary & above**

[www.esplanade.com/limelight](http://www.esplanade.com/limelight)



Catholic High School Choir



CHIJ St. Nicholas Girls School Choir



Crescent Girls School  
Symphonic Band



Montfort Secondary School  
Military Band

and more...



## MARCH ON 6 – 17 Mar

March On is Esplanade's annual children's festival that explores relevant issues for the young through multi-disciplinary programmes and participatory arts experiences.

## JUNGLE BOOK REIMAGINED (SCHOOL SHOWS)

An Esplanade Co-Production  
Akram Khan Company (UK)

**6 – 7 Mar, Wed – Thu**  
**2.30pm**  
**Esplanade Theatre**

Dive into a magical world and celebrate the importance of belonging and respecting nature in this reimagined dance-theatre performance of one of children's favourite classics, Jungle Book.

There are also public performances on **8 & 9 Mar**.

Recommended for:  
**Lower Primary (8yrs) & above**



## SHINING IN SPACE

An Esplanade Production  
Featuring musicians from Yong Siew Toh Conservatory of Music and Singapore Youth Philharmonic Orchestra  
Directed by Jeremy Leong and NONFORM



**9 Mar, Sat, 2.30pm**  
**Esplanade Concert Hall**

A wondrous musical trip to space told through orchestral music, storytelling, and multimedia, join Shining on an intergalactic adventure as she creates fond new memories and overcomes the mysteries of space!

Recommended for:  
**Lower Primary**



## INMO YANG AND FESTIVAL STRINGS LUCERNE

*Inmo Yang, Daniel Dodds, Festival Strings Lucerne (Switzerland, South Korea)*

Musical excellence abound with Festival Strings Lucerne, Daniel Dodds and Inmo Yang's debut performance in Singapore, featuring Mozart, Prokofiev, Vieuxtemps, and more.

Recommended for:  
Upper Primary & above



**12 Mar, Tue, 7.30pm**  
**Esplanade Concert Hall**



## MUSIC FOR THE SISTINE CHAPEL

*The Tallis Scholars (UK)*

Hear The Tallis Scholars sing a selection of works by some of the biggest names in Renaissance composition in the Music for the Sistine Chapel.

Recommended for:  
Secondary & above



**14 Mar, Thu, 7.30pm**  
**Esplanade Concert Hall**

## THE RUNNING SHOW

*by Monica Bill Barnes & Company, in collaboration with Singapore Dancers*

"An expertly crafted show that was not only enthusiastically performed by all, but spoke to the importance of dance." – LA Dance Chronicle

Performed collaboratively with local dancers of all ages, this enlightening dance-theatre performance examines the life of a dancer through an athlete's point of view.

Recommended for:  
Primary & above



**20 Apr, Sat, 8pm**  
**21 Apr, Sun, 3pm**  
**Singtel Waterfront**  
**Theatre at Esplanade**

# CONTACT US

## **F.Y.I and school programmes**

Esplanade Children & Youth Team  
6828 8323  
education@esplanade.com

## **Booking and Ticketing Matters**

Esplanade Box Office  
6828 8389  
boxoffice@esplanade.com

## **Esplanade Trail and Learning Journeys**

Esplanade Children & Youth Team  
6828 8323  
education@esplanade.com



For more information about programmes for the young, check out [www.esplanade.com/schools](http://www.esplanade.com/schools).



## ESPLANADE OFFSTAGE



Your all-access backstage pass to the performing arts at Esplanade – Theatres on the Bay.

*Offstage* is your insider's guide to Singapore and Asian arts and culture, demystified for newcomers 'but also offering perspectives that are in-depth or off the beaten track.

Produced by Esplanade, Singapore's national performing arts centre, *Offstage* is for everyone, including families, schools and researchers.

Bring the arts into the classroom with resources that have been created with students and teachers in mind.

Find out more at  
[www.esplanade.com/offstage/schools](http://www.esplanade.com/offstage/schools).

For other arts-related content, check out [www.esplanade.com/offstage](http://www.esplanade.com/offstage).



Illustrations by Shanlyn Chew

## FEED YOUR IMAGINATION (F.Y.I)



*Feed Your Imagination (F.Y.I)* offers primary and secondary school students a series of music, dance and drama performances by established local arts groups. It aims to educate by imparting knowledge about the arts, provoking thought and encouraging audience participation. Each *F.Y.I* performance includes an optional tour around Esplanade, resource kit for teachers to use before and after the performance and an activity kit for each student.

[www.esplanade.com/fyi](http://www.esplanade.com/fyi)



# 2024



## Jan – Dec

see pg 22 – 23

Inside the Music:  
Freedom in Jazz

## Feb – Aug

see pg 26

### LIMELIGHT®

## Mar

see pg 27 – 28

6 – 17 March On

- 6–7** Jungle Book reimagined (School Shows)
- 9** Shining in Space



# OVERVIEW



## Oct

**22 – 25**


The Feelings Farm

see pg 18 – 19

## Aug

- 14** The Feelings Farm Workshop see pg 24
- 16** The Musical City Walking Tour see pg 24

## Aug – Dec

The Musical City 

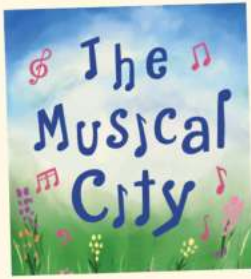
see pg 20 – 21



# PROGRAMME



- 12 Inmo Yang and Festival Strings Lucerne
- 14 Music for The Sistine Chapel
- 20 - 21 The Running Show



- 17 - 19 The Lesson
- 23 - 25 see pg 16 - 17

## May

15 - 16  
20 - 21

Day Out! @  
Esplanade  
*see pg 10 - 11*



## Jun

25 - 28

International  
Friendship Day  
*see pg 12 - 13*



## Jul

- 17 - 18 A Sea of Stories: Music and Myths from Southeast Asia  
*see pg 14 - 15*



To get regular updates about programmes for students and educators, email [education@esplanade.com](mailto:education@esplanade.com) to subscribe to our educator's mailing list.



