



**Esplanade
Presents**

**Feed Your
Imagination**

**FEED
YOUR**

IMAGINATION

**ARTS PROGRAMME
FOR SCHOOLS**

**20
23**

"At the very least, participatory involvement with the many forms of art can enable us to see more in our experience, to hear more on normally unheard frequencies, to become conscious of what daily routines have obscured, what habit and convention have suppressed."

Professor Maxine Greene



**"Art is life, life is art.
To live and to ask questions
[have] become the most
important things in my life."**

Amanda Heng
Visual Artist

CONTENTS

OUR MESSAGE TO EDUCATORS	4
THE F.Y.I EXPERIENCE	6
PRODUCTION CATEGORIES	7
PRODUCTIONS AT A GLANCE	8
BOOKING INFORMATION	9
DAY OUT! @ ESPLANADE By ScRach MarcS and Open Score Project	10 & 11
NURI TERBANG MALAM: MALAY MUSIC IN SINGAPORE THROUGH TIME By Syed Ahmad, Jeremiah Choy and Orkes Nuri	12 & 13
SURVIVOR SINGAPORE By The Necessary Stage	14 & 15
KITA THAKA THOM: WHEN JAZZ MEETS CARNATIC MUSIC By Varsha	16 & 17
RE: ASSEMBLY By Drama Box	18 & 19
THE ZODIAC RACE By The Finger Players and Ding Yi Music Company	20 & 21
O/AURAL WAVES: RED HILL By Kamini Ramachandran, Ferry and Irfan Kasban	22 & 23
THE MUSICAL CANVAS By Ding Yi Music Company	24 & 25
KELUARGA BESAR EN. KARIM (THE KARIMS) By Checkpoint Theatre	26 & 27
INSIDE THE MUSIC: FREEDOM IN JAZZ By Nicole Duffell Quintet	28 & 29
EDUCATORS' DEVELOPMENT WORKSHOPS	30
GROUP VISITS	31
2023 PROGRAMME HIGHLIGHTS	32 & 33
CONTACT DETAILS	34



OUR MESSAGE TO EDUCATORS

As Singapore's national performing arts centre, Esplanade believes in making the arts accessible for everyone. With this in mind, we have conceived the **Feed Your Imagination (F.Y.I)** series, a selection of arts education performances that will introduce your students to the arts in an engaging and meaningful way.

Since its inception in 2007, *F.Y.I* has reached out to over 117,000 primary and secondary school students and teachers. Together with the artists, we have conceptualised and curated programmes that offer a glimpse into our cultural heritage, encourage discussion within and beyond the classroom and ultimately, cultivate a lifelong interest and connection to the arts.

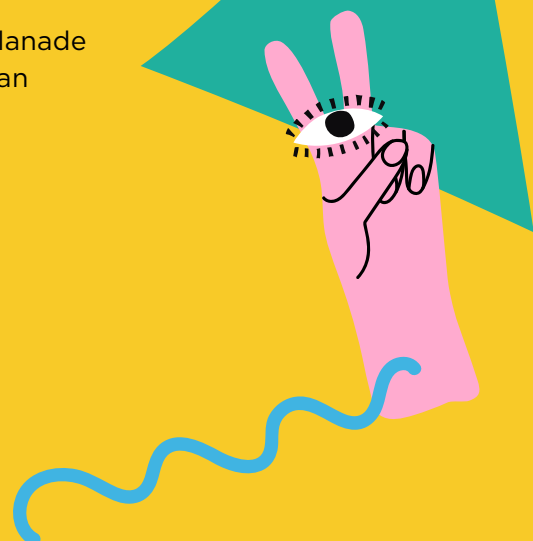
We are thankful that among many of you, we have arts lovers and advocates who recognise the value and importance of the arts and its ability to make a positive impact on your students. Like you, we also believe that active arts participation can aid in the social, emotional and cognitive development of your students by cultivating them into self-directed learners with the desire to seek knowledge, question and reflect.

With *F.Y.I*, we hope to support you in your role as educators and work hand in hand in developing a generation of creative thinkers through arts education.

We look forward to welcoming you and your students to Esplanade or online through our digital programmes. Let us embark on an enriching and fruitful arts journey together!

Sincerely,

THE CHILDREN & YOUTH TEAM
ESPLANADE - THEATRES ON THE BAY



ASSEMBLY

By Drama Box



THE MUSICAL ZODIAC

By Ding Yi Music Company



DON'T KNOW, DON'T CARE

By The Necessary Stage



JUN AND THE OCTOPUS

By The Finger Players



**MCBEAT AND THE LIL' SHAKE CREW:
REIMAGINING SHAKESPEARE THROUGH RAP**

By Patch and Punnet





THE F.Y.I EXPERIENCE



An *F.Y.I* experience is more than just a performance for your students to attend. Set in a professional venue and working with quality artists, Esplanade seeks to programme relevant works that are engaging and meaningful for students.

1. EDUCATIONAL PRODUCTION

A curated performance designed for students + facilitation (e.g interactive activities, post-show discussion).



3. DIGITAL PROGRAMMES

Digital offerings are available for selected programmes. The following are available for students to access in class or as part of home-based learning:

- *The Musical Canvas* (pg. 24)
- *Keluarga Besar En. Karim (The Karims)* (pg. 26)
- *Inside the Music: Freedom in Jazz* (pg. 28)

Refer to the respective programme page for more details.

2. PERFORMANCE GUIDE

For the full *F.Y.I* experience, we also provide a **Performance Guide** which consists of an educator's guide and a student's guide. In these guides, you will find the following:



EDUCATOR'S GUIDE

Resource material to help prepare students for the *F.Y.I* experience or to extend their learning beyond the performance.

Emailed to educators who book into the show.



STUDENT'S GUIDE

A guide with information as well as activities related to the performance they will be watching.

Given out to students on-site for live performances at Esplanade. For digital programmes, this will be emailed to educators, to be given out before the screening of the performance.

4. OPTIONAL ESPLANADE TOUR OR TRAIL

Teachers have the option to choose to go on an Esplanade Tour (guided) or an Esplanade Trail (self-guided).

Tours are limited, on a first-come, first-served basis. Access to venues depends on availability.

PRODUCTION CATEGORIES

Based on the learning objectives, F.Y./ productions can be classified under these categories.

CHARACTER DEVELOPMENT



Productions under this category address ethical and social-emotional issues that are fundamental to the growth of a person of good character.

Key objectives include equipping students with tools to cultivate strong values through self-reflection, engender students with a sense of self-worth, and encourage students to understand, evaluate and appreciate multiple perspectives.

Examples of topics include those related to self-esteem, identity, prejudice, and family and social relationships.

CULTURAL UNDERSTANDING



Productions under this category are representative of art forms from various cultures and traditions, ranging from music, dance, and drama.

Key objectives include heightening students' cultural awareness and engaging with the world they live in. Through exposure to these art forms, students will begin to understand and appreciate their own and/or others' histories, traditions and cultures.

CITIZENSHIP



Productions under this category address community, national and/or global issues, in line with emerging 21st century competencies.

Key objectives include equipping students with the tools to cultivate concerned, informed and responsible citizens through the subject matter discussed within the art form.

Examples of topics include those related to the preservation of culture and heritage, exploring ideas related to national identity and learning more about important historical events and their impact.

GENRE EXPOSURE



Productions under this category expose students to genre-specific art forms in a supported environment, and are scaffolded for novices.

Key objectives include heightening students' awareness and enhancing their knowledge of a genre-specific art form, while cultivating an appreciation for the aesthetics, practice and expressions of the form.

Some examples of genre-specific art forms include jazz music, contemporary dance and traditional forms of puppetry.

2023 PRODUCTIONS AT A GLANCE

	DATES	PRODUCTION	RECOMMENDED LEVEL
TERM 1	3 JAN - 31 MAR	The Musical Canvas 	Primary
TERM 2	24 & 25 MAY	Day Out! @ Esplanade*	Primary
	25 & 26 MAY	Nuri Terbang Malam: Malay Music in Singapore through Time	Upper Primary - Lower Secondary
TERM 3	4 - 7 JUL	Survivor Singapore	Secondary - Tertiary
	5 & 6 JUL	Kita Thaka Thom: When Jazz Meets Carnatic Music	Secondary
	12 - 21 JUL	Re: Assembly	Secondary - Tertiary
	24 - 27 JUL	The Zodiac Race	Primary
	21 - 25 AUG	O/Aural Waves: Red Hill	Primary
TERM 4	16 OCT - 4 NOV	Keluarga Besar En. Karim (The Karims) 	Secondary - Tertiary
YEAR ROUND	JAN - DEC	Inside the Music: Freedom in Jazz** 	Lower Secondary

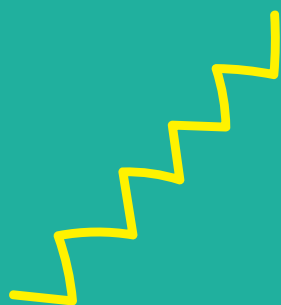


Digital Programmes

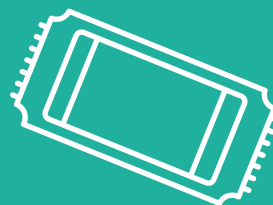
*Day Out! @ Esplanade consists of a performance, workshop and a concert hall tour.

**Inside the Music: Freedom in Jazz is part of the Digital Performing Arts Based Learning (PABL) Pilot Programme, commissioned by the National Arts Council.

Information about the *Feed Your Imagination (F.Y.I)* programme is also available online. To make a booking, go to www.esplanade.com/fyi.



BOOKING INFORMATION



TICKET PRICE

LIVE PERFORMANCES

\$23/TICKET

EDUCATORS' DEVELOPMENT WORKSHOPS

\$15/TICKET

DIGITAL PERFORMANCES

BASIC PACKAGE:

\$2,500/PACKAGE

SINGLE TICKET:

\$15/TICKET

Digital programmes are suited for cohort viewing. Each package enables up to five classes of students to watch the programme concurrently.

Package/ticket price excludes SISTIC booking fee.
All bookings for F.Y.I productions are to be done via www.esplanade.com/fyi.

SUBSIDIES AND COMPLIMENTARY TICKETS

SCHOOLS

(Primary and Secondary Schools, Junior Colleges and Centralised Institute)

For every **20 tickets purchased** per production, **one complimentary** ticket will be issued.

Complimentary ticket offer is only available if the purchases are made in a single transaction for the same production.

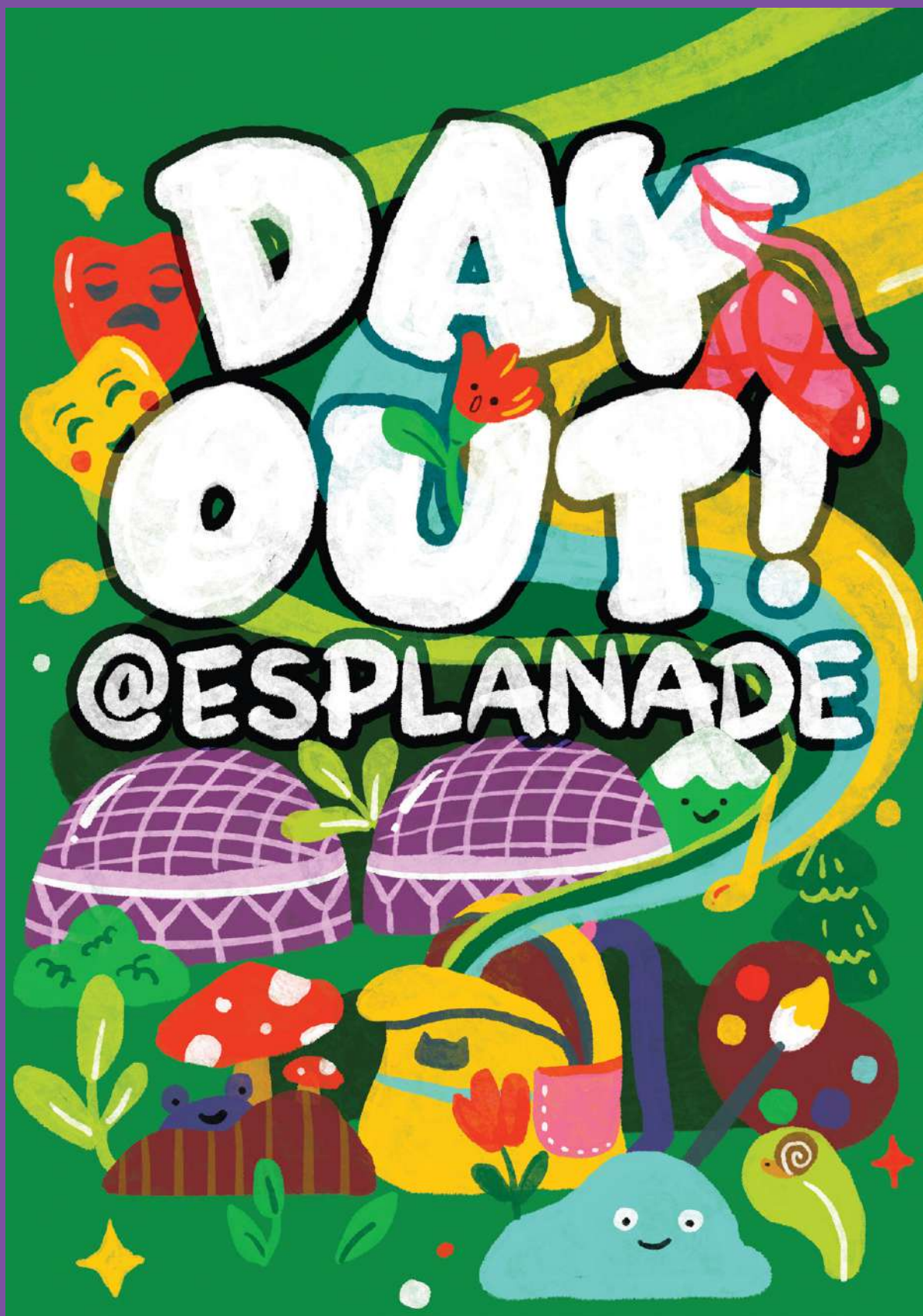
Schools can use the Tote Board Arts Grant to subsidise up to 50% of the ticket price.

SPED SCHOOLS

For every **ten tickets purchased** per production, **two complimentary** tickets will be issued.

Complimentary ticket offer is only available if the purchases are made in a single transaction for the same production.

SPED schools can use the Tote Board Arts Grant to subsidise up to 70% of the ticket price.



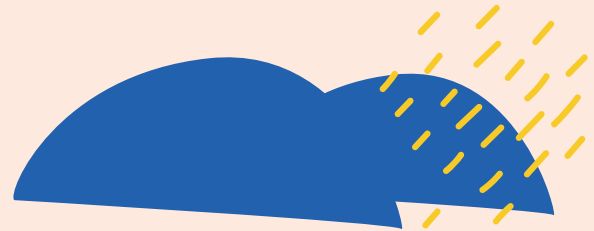
LEARNING OBJECTIVES

- Learn about the evolution of street dance and perform simple street dance steps
- Appreciate how melody and harmony work together in an *angklung* ensemble
- Explore traditional Chinese and Indian percussion instruments and perform body percussion
- Explore the different performing spaces of Esplanade

Multi-disciplinary

DAY OUT! @ ESPLANADE

BY SCRACH MARCS AND
OPEN SCORE PROJECT



24 & 25 MAY
WED & THU

24 & 25 May
1st Session
9.30AM - 12.30PM

24 May
2nd Session
2.30 - 5.30PM

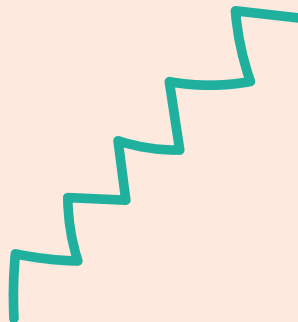
Duration
3HRS

Language
ENGLISH

Venue
**VARIOUS LOCATIONS
AROUND ESPLANADE**

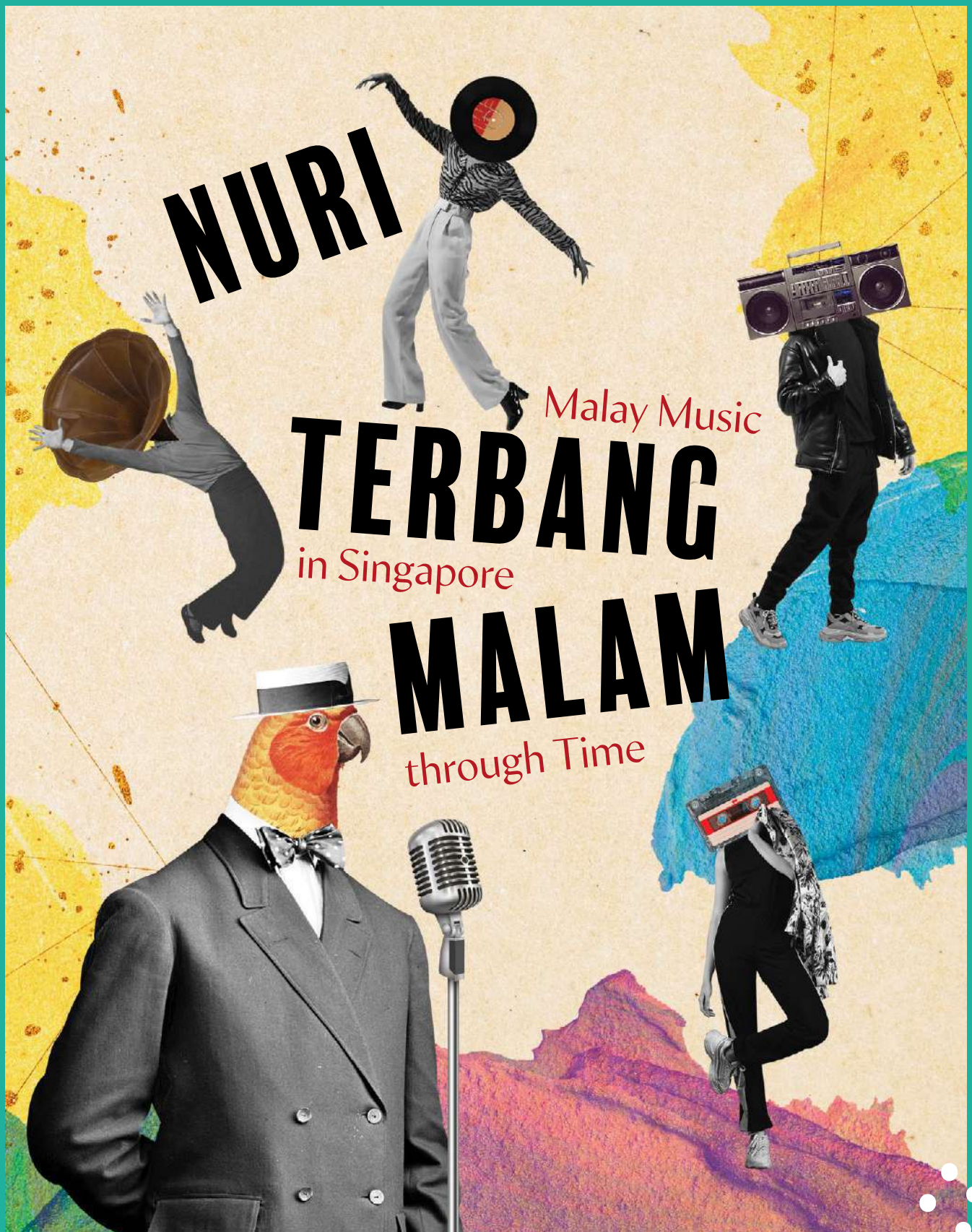
Join an exclusive tour of Esplanade's different performance venues during *Day Out @Esplanade!*

Watch a street dance performance by ScRach MarcS at the Esplanade Outdoor Theatre and pick up a few street dance moves to groove to. Next, learn about the different musical cultures with Open Score Project through various workshops. Get together to experience the value of teamwork in an *angklung* ensemble and put your rhythmic skills to the test as you explore traditional Chinese and Indian percussion instruments.



**RECOMMENDED FOR:
PRIMARY**





LEARNING OBJECTIVES

- Listen to a live performance of popular Singapore and Malay music



- Gain an overview of the history of Malay music in Singapore starting from 1903



- Gain a better understanding of the songs and their impact on Singapore and the Malay community



- Reflect on how globalisation and other historical and socio-cultural factors have influenced and shaped Malay music

Music

NURI TERBANG MALAM: MALAY MUSIC IN SINGAPORE THROUGH TIME

BY SYED AHMAD, JEREMIAH CHOY
AND ORKES NURI

Lagu Nuri Terbang Malam recorded back in 1903 by Malay singer Qasim, was the earliest physical recorded evidence of Malay music.

Together, music director Syed Ahmad, show director Jeremiah Choy and the band Orkes Nuri will take audiences on a journey through songs and stories to trace Malay music history from pre-independence 1900s to present day Singapore.

Through melodies, rhythms and lyrics, students will be able to gain an understanding of how various social, historical, cultural and inter-cultural shifts have influenced the Malay community, its language and culture, and in turn, how these have contributed to a larger Singapore identity.

25 & 26 MAY
THU & FRI

1st Performance
2.30 - 3.45PM

2nd Performance
5 - 6.15PM

Duration
1HR 15MINS

Language
PERFORMED IN ENGLISH

Venue
ESPLANADE RECITAL STUDIO

RECOMMENDED FOR:
UPPER PRIMARY -
LOWER SECONDARY



**GENRE
EXPOSURE**

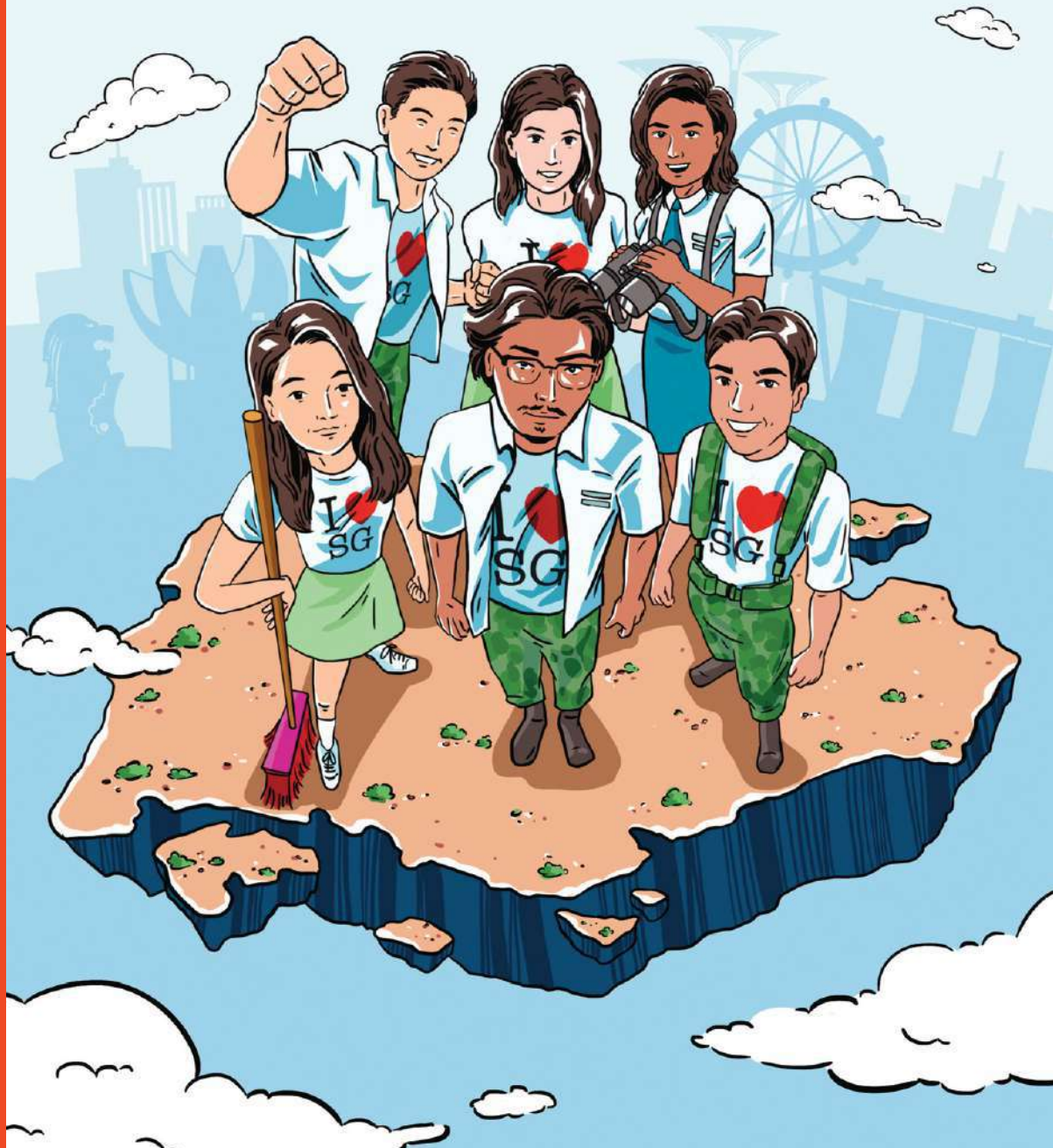


**CULTURAL
UNDERSTANDING**

Turn to page 9 for booking details.

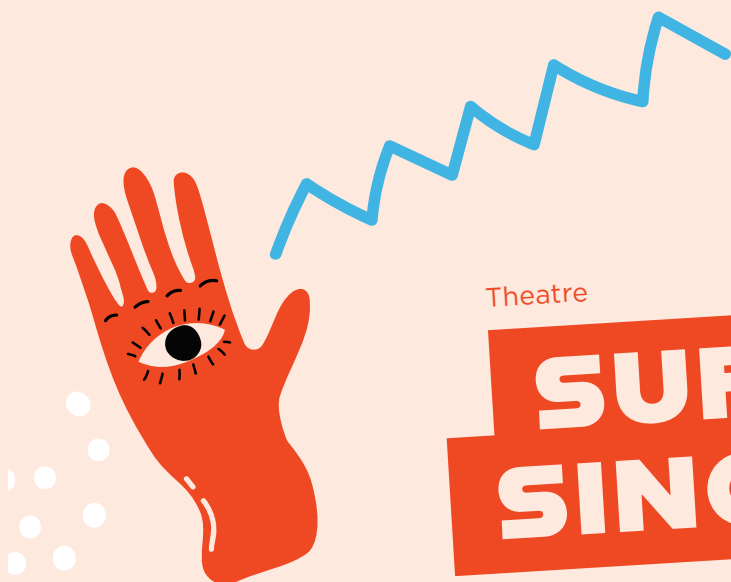
SURVIVOR

SINGAPORE



LEARNING OBJECTIVES

- Be engaged to think deeply about the themes and issues surfaced, including what it means to be Singaporean, and the importance of maintaining harmony whilst speaking up against discrimination of marginalised communities
- Be empowered to effect positive change and manage problems in their lives, especially in terms of building a more equitable society
- Be enabled by new information about Singapore theatre and its power to effect change



Theatre

SURVIVOR SINGAPORE

BY THE NECESSARY STAGE
DIRECTED BY DEONN YANG



4 - 7 JUL

TUE - FRI

1st Performance

2.30 - 4PM

2nd Performance

5 - 6.30PM

Duration

1HR 30MINS

Language

ENGLISH

Venue

ESPLANADE THEATRE STUDIO

A group of students have been assigned a project on the theme of National Education. They wrack their brains to find out what they can do that will really make a difference.

Instead of going on field trips to the Parliament House or performing a multiracial dance, they decide to create a project that will make all young Singaporeans value life and not take their comforts for granted.

They decide to create *Survivor Singapore*. But... have they gone too far to prove a point?

Previously staged by The Necessary Stage in 2003 and 2007.

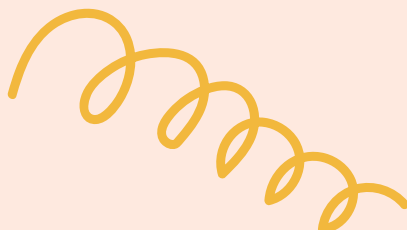
**RECOMMENDED FOR:
SECONDARY -
TERTIARY**



CHARACTER
DEVELOPMENT



CITIZENSHIP





Kita Thaka Thom

WHEN JAZZ MEETS CARNATIC MUSIC

LEARNING OBJECTIVES

- Listen to a live performance by a Singapore band and discover different music influences including jazz, rock and Carnatic music.



- Participate in simple *konnakkol* and *swaras* exercises and learn a few jazz idioms



- Gain an awareness of how band members work together to compose and perform music

Music

KITA THAKA THOM: WHEN JAZZ MEETS CARNATIC MUSIC

BY VARSHA



5 & 6 JUL
WED & THU

1st Performance
2.30 - 3.45PM

2nd Performance
5 - 6.15PM

Duration
1HR 15MINS

Language
ENGLISH

Venue
ESPLANADE RECITAL STUDIO

FOR EDUCATORS

As a companion programme, there is a development workshop, *First Jazz Encounters in the Classroom* by Dr. Tony Makarome specially for educators. To find out more, refer to page 30.

Formed in 2015, Varsha is a Singaporean band whose infectious uplifting songs reflect the multitude of music origins of its members. Spanning from Carnatic music (from South India) to jazz, rock, and Latin percussion, this quintet will perform various pieces and invite students to learn the rudiments of *konnakkol* (rhythmic vocalisation) and *swaras* (solfege singing), as well as a few jazz and rock idioms.

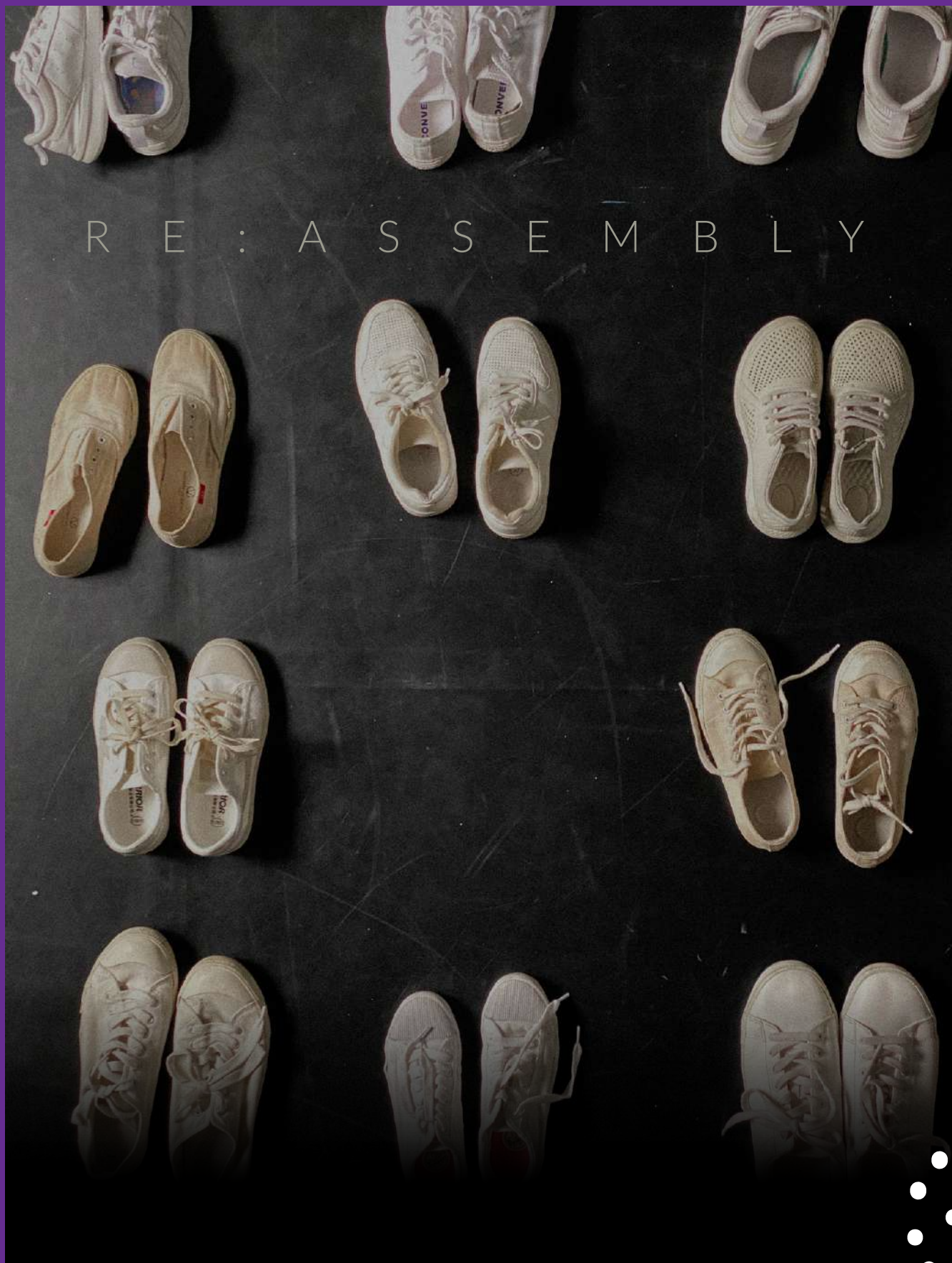
With these useful musical tools (and textures) on hand, students will be able to appreciate composition and improvisation as a fun part of music-making.

Beginners with no music training are welcome and encouraged to attend this performance.

**RECOMMENDED FOR:
SECONDARY**



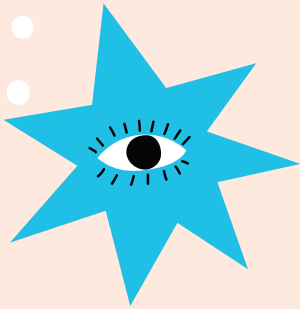
Turn to page 9 for booking details.



LEARNING OBJECTIVES

- Develop understanding and empathy towards people from different circumstances

- Critically reflect on issues that may negatively impact interpersonal relationships and the social environment in school



Theatre

RE: ASSEMBLY

BY DRAMA BOX



"It was a very enriching experience where drama comes alive - interactive spaces and freedom to explore the play itself. My students have never been to a play like this. It was fun and definitely one for the books!"

- Teacher, Broadrick Secondary

"I like that it shows what some students may be going through and that we should help them. Even though it might be hard, we can still help them in any way we can."

- Student, CHIJ Katong Convent

Haunted corridors and toilet cubicles... every school has its fair share of urban myths and ghost stories, passed down carefully over generations. Beyond the paranormal, what are some other visible and invisible ways in which fear is being manifested within the school compounds?

Based on the premises of a haunted school, *Re: Assembly* is a response to the 2022 immersive theatrical experience *Assembly* which depicts the struggles that students face. In a time when youths are learning to manage their emotions in an increasingly complex world, this performance creates a safe space through theatre and fiction for students to delve into the complexities and effects of issues such as bullying.

Advisory: *Re: Assembly* covers issues related to suicide, bullying and eating disorders which may cause discomfort to certain individuals. If you would like to find out more about the themes and issues explored in this programme, please email education@esplanade.com for more information.

The performance includes mentions of hauntings and the supernatural. It also takes place in low light conditions and in a format that requires the audience to walk or stand throughout. Due to the nature and format of the show, viewer discretion is advised.

12 - 21 JUL
WED - FRI

1st Performance
2.30 - 4PM

2nd Performance
5.30 - 7PM

Duration
1HR 30MINS

Language
ENGLISH

Venue
ESPLANADE ANNEXE STUDIO

RECOMMENDED FOR:
SECONDARY -
TERTIARY



Turn to page 9 for booking details.



LEARNING OBJECTIVES

- Identify traditional Chinese instruments in a Chinese ensemble
- Appreciate Chinese mythology through the art of puppetry and Chinese traditional music
- Identify emotions and moods through musical expressions such as changes in tempo, textures and timbres
- Learn the importance of teamwork and working harmoniously



Puppetry and Music

THE ZODIAC RACE

BY THE FINGER PLAYERS AND
DING YI MUSIC COMPANY

THE
FINGER
PLAYERS 十指幫



24 - 27 JUL
MON - THU

1st Performance
10 - 11AM

2nd Performance
2.30 - 3.30PM

Duration
1HR

Language
ENGLISH

Venue
**SINGTEL WATERFRONT
THEATRE AT ESPLANADE**

Twelve animals from earth compete in a battle of speed and wit to cross the heavenly gate—the rat, ox, tiger, rabbit, dragon, snake, horse, goat, monkey, rooster, dog, and pig. As a reward for turning up, the heavenly Emperor promises to name a year in the zodiac after each animal. However, the race will determine the order in which they would be placed in the lunar calendar.

A fierce competition between the twelve animals ensues, triggering a series of celestial events which rock the universe across time and space.

A sonic extravaganza, the emotionally and musically charged production combines the best talents from two award winning companies, Ding Yi Music Company and The Finger Players.

**RECOMMENDED FOR:
PRIMARY**



GENRE
EXPOSURE



CHARACTER
DEVELOPMENT

Turn to page 9 for booking details.

O/AURAL WAVES: RED HILL



KAMINI RAMACHANDRAN



FERRY



IRFAN KASBAN

LEARNING OBJECTIVES

- Learn about a local tale, *The Legend of Bukit Merah*



- Experience storytelling through various forms such as sound-making, multimedia, and movement



- Practice and develop listening skills and habits through storytelling



- Foster teamwork through a co-creation process with the artists to create stories together

Multi-disciplinary

O/AURAL WAVES: RED HILL

BY KAMINI RAMACHANDRAN,
FERRY AND IRFAN KASBAN

21 - 25 AUG
MON - FRI

1st Performance
10 - 11AM

2nd Performance
2.30 - 3.30PM

Duration
1HR

Language
ENGLISH

Venue
ESPLANADE ANNEXE STUDIO

FOR EDUCATORS

As a companion programme, there is a development workshop *How to Get Started with Stories in the Classroom* by Kamini Ramachandran specially for educators. To find out more, refer to page 30.

Discover oral storytelling through immersive auditory and visual experiences designed to encourage deep listening in children. Journey into Singapura's historical past as the legend of attacking swordfish is brought to life with art and technology. Experience foley, sound-making, and visual projections through hands-on participatory methods that encourage children to become co-creators of the story.

Advisory: This storytelling experience requires the wearing of wireless headphones throughout the session.

This performance takes place in low light conditions, and in a format that requires the audience to walk or stand throughout. Due to the nature and format of the show, viewer discretion is advised

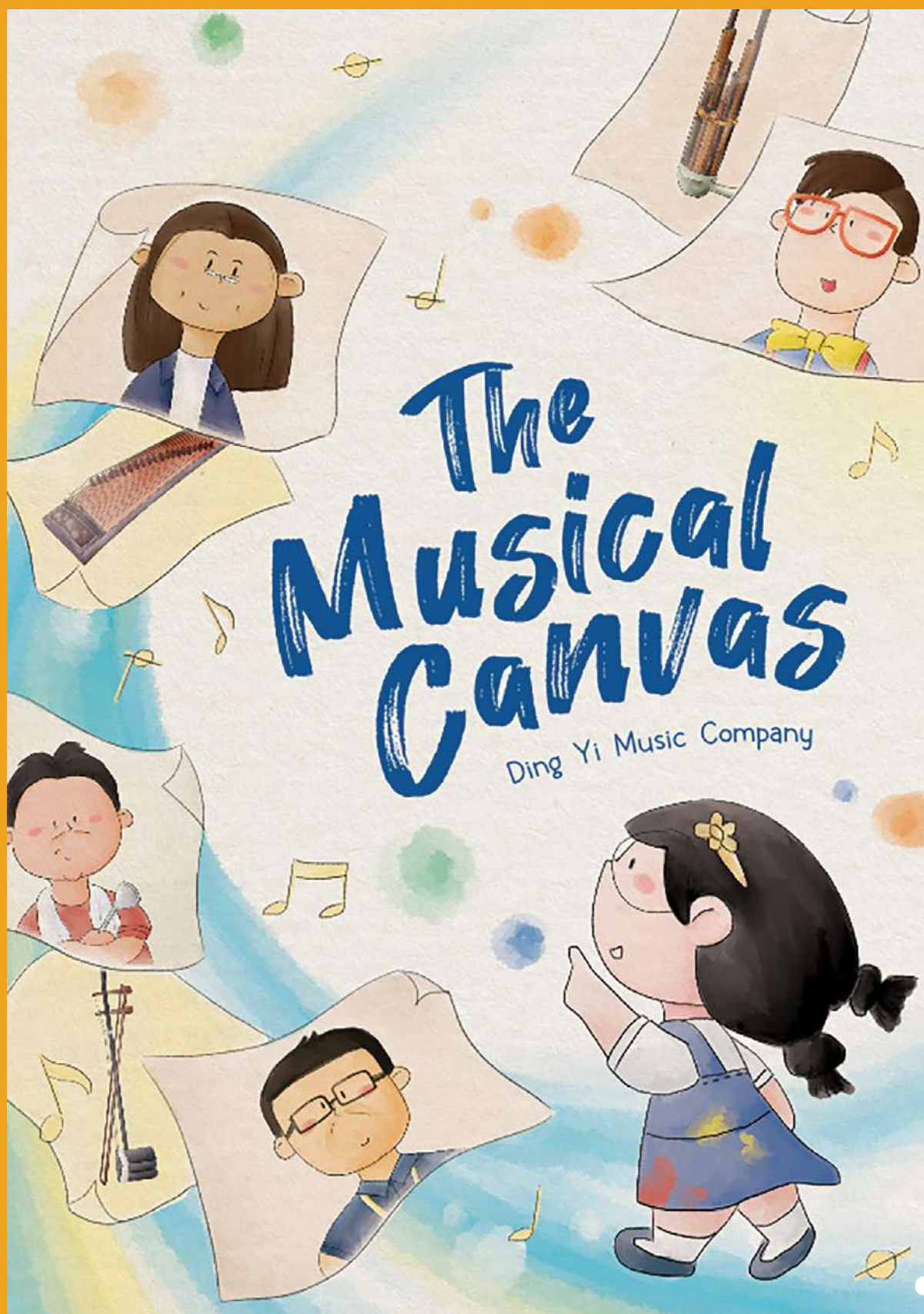
**RECOMMENDED FOR:
PRIMARY**



**GENRE
EXPOSURE**



**CHARACTER
DEVELOPMENT**



LEARNING OBJECTIVES

- Recognise and identify different instruments in a Chinese chamber ensemble



- Listen to how harmony, melody and accompaniment interact and contribute to Chinese chamber music



- Respond to music visually using their imagination



Multi-disciplinary

THE MUSICAL CANVAS

BY DING YI MUSIC COMPANY



"It was a lovely experience for our pupils. Many positive takeaways from them. This music and art interdisciplinary learning approach presents a refreshing perspective of the arts to them."

– Teacher, Opera Estate Primary

An audio-visual experience accompanied by an illustrated guide that tells the story of May, a curious student in search of the power of her imagination. *The Musical Canvas* is an experiential journey for students to learn about the different elements of Chinese chamber music, while guiding them to reimagine music visually.

The model student in her school, May has never had a single problem completing any assignment her teachers set. But when her art teacher gives her a task to create an artwork using just her imagination, she finds herself stuck. However, May realises that she experiences sound and music visually.

On her quest to complete her painting, she meets characters who introduce her to different Chinese instruments and the role they play in an ensemble. Will this help her to express herself through her imagination? Turn the pages of the guide and join May on her colourful journey with captivating illustrations and audio recordings of the Chinese chamber ensemble.

The Musical Canvas is co-produced by Esplanade - Theatres on the Bay and Ding Yi Music Company.

JAN - MAR

This programme is presented in the form of a printed illustrated guide which includes links to the digital experience.

Duration

APPROXIMATELY 1HR

Language

ENGLISH

**RECOMMENDED FOR:
PRIMARY**



Turn to page 9 for booking details.

25

KELUARGA BESAR EN. KARIM (THE KARIMS)



LEARNING OBJECTIVES

- Examine the gender roles in Encik Karim's family



- Identify and reflect on the differences in culture and tradition in the traditional and modern family



- Examine and reflect on the dynamics of intergenerational relation



Theatre



KELUARGA BESAR EN. KARIM [THE KARIMS] BY CHECKPOINT THEATRE

“The play was especially accessible to our NA/NT Malay students because of the mix of their mother tongue in it, yet understandable by those from other races. It opened up questions and gave our Malay students a chance to share more about their practices.”

– Teacher, Queensway Secondary

“I really enjoyed the show and since it was my first time watching a theatre production, I think this show has allowed me to have a great impression of theatre.”

– Student, Springfield Secondary

Meet *Keluarga Besar En. Karim (The Karims)*. All living in the same HDB (Housing Development Board) flat are Encik Karim, his wife Normah, and his two daughters, Rinny and Balqis. But when new son-in-law Aqil moves in, the shifting dynamics re-open old wounds and surface new tensions. With Encik Karim determined to remain the centre of his newly-expanded household, how far is each of them willing to compromise for the sake of family?

Written with wit and affection, playwright Adib Kosnan offers an intimate and strikingly recognisable look at family, in all its joys and messiness. Between the *sotong hitam* dinners, spontaneous heart-to-heart chats, and monthly family gatherings, the Karims learn to navigate the rituals and traditions that hold them together. With a bit of *rewang*¹ from all sides, the Karims have to find a way to come into their own without growing apart.

¹rewang – a collaborative effort involving the community.

16 OCT – 4 NOV
MON – SAT

The programme will be viewed via **SISTIC Live** and will be available online with unlimited access within the stipulated date.

Duration
1HR 20MINS

Language
MALAY AND ENGLISH
[WITH ENGLISH SUBTITLES]

Venue
ONLINE

RECOMMENDED FOR:
SECONDARY –
TERTIARY



Turn to page 9 for booking details.



Inside the music

freedom in jazz

LEARNING OBJECTIVES

- Gain a basic understanding of the history and development of jazz
- Recognise various instruments and their roles in the creation of jazz music
- Identify basic jazz concepts such as the major and minor pentatonic scales, rhythm and syncopation, and call and response
- Appreciate how jazz concepts are used in the creation of jazz music
- Gain a basic appreciation of how cultural instruments may be incorporated into jazz music



Music

INSIDE THE MUSIC: FREEDOM IN JAZZ

BY NICOLE DUFFELL QUINTET

JAN - DEC

The programme will be viewed via **SISTIC Live** and will be available online with unlimited access within the quarter^.

Duration

1HR 15MINS

Venue

ONLINE

Language

ENGLISH

**[WITH ENGLISH
SUBTITLES]**

Jazz is the ultimate expression of melody, rhythm, and improvisation — by any instrument or voice. In the centre of the creation of jazz music is what we call the “blues”.

Inside the Music: Freedom in Jazz is an introduction to jazz music. Performed and facilitated by some of Singapore’s leading jazz musicians, students will be introduced to a brief history of the music genre that has spread to different corners of the world today, its unique socio-political history, and its connection with local musicians and the music scene.

Through performances recorded live at Esplanade, students will also find out more about essential jazz elements such as the major and minor pentatonic scales, rhythm and syncopation, the blues scale, and call and response. This programme is aimed at students and teachers with some preceding knowledge of music but can be appreciated by students at any level of music learning.

This programme is commissioned by the National Arts Council as part of the Digital Performing Arts-Based Learning (PABL) Pilot Programme.

^Notes:

Bookings slots are based on a quarterly basis.
Each booking will enable unlimited viewing for the quarter.

I. JAN - MAR

booking closes 17 Mar

II. APR - JUN

booking closes 16 Jun

III. JUL - SEP

booking closes 15 Sep

IV. OCT - DEC

booking closes 15 Dec

**RECOMMENDED FOR:
LOWER SECONDARY**



**GENRE
EXPOSURE**



**CULTURAL
UNDERSTANDING**

Turn to page 9 for booking details.

EDUCATORS' DEVELOPMENT WORKSHOPS

A new *F.Y.I.* initiative, these teacher development workshops are designed to offer useful introductory tips and how-to tools for teaching an artform or concept in the classroom. It can be experienced as a standalone activity, or as a complement to the *F.Y.I.* performance. These intimate workshops encourage hands-on participation, and teachers should take the opportunity to interact with the artist facilitator, as well as each other to discuss possible challenges and solutions.



FIRST JAZZ ENCOUNTERS IN THE CLASSROOM

BY DR. TONY MAKAROME
4 JUL, TUE, 2.30PM
ESPLANADE REHEARSAL STUDIO

Laying a keen foundation in listening awareness is especially crucial in kick-starting a student's personal musical and creative instinct. In this workshop, Dr. Makarome shares strategies and activities that he has developed and used in the past decade to engage students in the study of jazz and improvisation. This class is targeted at music teachers who are trained in Western classical music and would like to develop their capabilities in the teaching of jazz.

HOW TO GET STARTED WITH STORIES IN THE CLASSROOM

BY KAMINI RAMACHANDRAN
18 AUG, FRI, 2.30PM
ESPLANADE THE BAY ROOM



Delve into the mind of a storyteller and learn techniques that you can use with your students. Discover how to apply sequencing and visualization to support structured thinking and writing.

Participate in memory exercises and story mapping activities for stronger recall and retention processes. Get imaginative by playing a game of story cards to kickstart your creativity. The tricks and trades of oral storytelling are powerful tools that can be applied in multiple ways to support a creative classroom environment.

GROUP VISITS



ESPLANADE TRAIL

A specially developed **self-guided trail** for students, to be facilitated by the school's accompanying educator.

Learn more about Esplanade, its role as Singapore's national performing arts centre and the visual arts spaces within the centre.

Prior to the visit, educators will receive a copy of:

- a **Trail Worksheet** with information and activities
- an **Educator's Guide** with notes & suggested activities to extend the learning experience in the classroom

Suitable for
PRIMARY & SECONDARY STUDENTS

Cost
FREE

Duration
1HR APPROX.



ESPLANADE TOUR

A **guided tour** to various locations within the arts centre.

Provides students with an insight into Esplanade's architecture and history as well as interesting nuggets of information about the various venues.

Take a peek into the auditoriums of Esplanade Concert Hall, Theatre and other front-of-house spaces.

Suitable for
PRIMARY STUDENTS & UP

Duration
45MINS APPROX.

Cost*
\$20 (Standard); **\$10** (Concession)

*Esplanade tours under the FYI series are offered complimentary as part of the FYI experience.



For Esplanade Tours and Customised Learning Journeys, please note that access into the performing venues is subject to availability.

2023 PROGRAMME HIGHLIGHTS FOR STUDENTS



FEB - NOV
7.30PM

Limelight is a series that gives some of the best school choirs and symphonic bands in Singapore an opportunity to perform at the Esplanade Concert Hall. Through this series, we hope to inspire excellence in performance among schools by offering them another platform to showcase their musical abilities to the public.

Recommended for
PRIMARY & UP

www.esplanade.com/limelight

QUEST - THE WHITE HARE

An Esplanade Commission
By Toy Factory Productions Ltd

3 & 4 MAR, FRI & SAT
8PM



A head-to-head cultural battle of the
Urbanites and Traditional Hokkien Opera!

Recommended for
SECONDARY & UP

THE BEGINNING OF ANYTHING

An Esplanade Production
Written by Michelle Tan, Directed by Edith Podesta

9 MAR, THU, 10:30AM [SCHOOL SHOW]
10 MAR, FRI, 3PM
11 MAR, SAT, 3PM & 7.30PM
12 MAR, SUN, 3PM



Through music, animation and storytelling, *The Beginning of Anything* guides children through the fears of change as they leave the comforts of home for the first time and ultimately finding love and support in the familiar and unfamiliar.

Recommended for
PRIMARY - LOWER SECONDARY

CHANGELING

An Esplanade Commission
By Void Deck Games

10 - 19 MAR, FRI - SUN
11AM & 3PM

Embark on an RPG odyssey into the hidden world of the Bunian fairies to rescue a boy who went missing twenty years ago.

Recommended for
PRIMARY



To get regular updates about programmes for students and educators, email education@esplanade.com to subscribe to our educator's mailing list.



CONTACT US

ENQUIRY ABOUT F.Y./ AND SCHOOL PROGRAMMES

Esplanade Children & Youth Team
6828 8323
education@esplanade.com

ENQUIRY ABOUT BOOKING OF SHOWS AND TICKETING MATTERS

Esplanade Box Office
6828 8389
boxoffice@esplanade.com

ENQUIRY ABOUT ESPLANADE TRAIL AND LEARNING JOURNEYS

Esplanade Children & Youth Team
6828 8323
education@esplanade.com

For more information about programmes for the young, check out esplanade.com/schools.



ESPLANADE OFFSTAGE



off
stage

**OFFSTAGE IS YOUR ALL-ACCESS BACKSTAGE
PASS TO THE PERFORMING ARTS AT
ESPLANADE - THEATRES ON THE BAY.**

It is your insider's guide to Singapore and Asian arts and culture, demystified for newcomers but also offering perspectives that are in-depth or off the beaten track.

Produced by Esplanade, Singapore's national performing arts centre, Offstage is for everyone, including families, schools and researchers.

Bring the arts into the classroom with resources that have been created for students and teachers. Find out more at esplanade.com/offstage/schools.

For other arts-related content, check out esplanade.com/offstage.



FEED YOUR IMAGINATION (F.Y.I.)

Feed Your Imagination (F.Y.I.) offers primary and secondary school students a series of music, dance and drama performances by established local arts groups. It aims to educate by imparting knowledge about the arts, provoking thought and encouraging audience participation. Each *F.Y.I.* performance includes an optional tour around Esplanade, resource kit for teachers to use before and/or after the performance and an activity kit for each student.

WWW.ESPLANADE.COM/FYI

