



**Esplanade  
Presents**

**Feed Your  
Imagination**

# The Musical Zodiac



**By Ding Yi  
Music Company**

An Esplanade  
Commission

**5 – 8 Jul 2022 | Tue – Fri**  
Esplanade Recital Studio

## Hello there!

We are glad to have had you with us at *The Musical Zodiac*, where we saw how a fierce competition turned into a harmonious relay! In this show, we heard how music can depict the different characters, their movements and the various emotions.

Although traditional Chinese instruments seem old, you saw how music can interact with the various scenes in the duologue. In this guide, there are activities that will challenge your knowledge and understanding of what you have watched and heard during the performance.

From all of us including the musicians, designers and production team, we hope you have enjoyed the experience, learned something new and most importantly, had a lot of fun. Thank you for joining us at *The Musical Zodiac*! If you would like to find out more about us, you can follow us on Instagram and Facebook (@dingyimusic).

## The Musical Zodiac Team

### Production Team

**Creative Director:** Wong De Li, Dedic  
**Director & Playwright:** Chong Tze Chien  
**Composer:** Sulwyn Lok  
**Production Stage Manager:** Cindy Sng  
**Lighting Designer:** Liu Yong Huay  
**Set Designer:** Wong Chee Wai

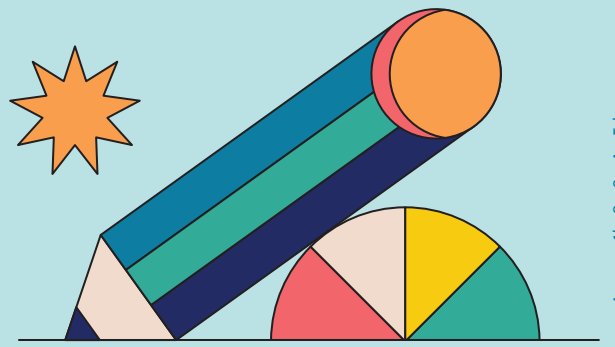
**Performers:** Ellison Tan, Farez Najid  
**Musicians:** Chia Wan Hua (Acting Concertmaster, *Gaohu*), Chin Yen Choong (*Erhu*), Fred Chan Hong Wei (*Zhonghu*), Bernecia Low (Cello), Edmund Song (Double Bass), Chua Yew Kok (*Pipa*), Eevian Loi (*Zhongruan*), Yvonne Tay (*Guzheng*), Tan Jie Qing (*Yangqin*), Ng Hsien Han (*Dizi*), Soh Swee Kiat (*Sheng*), Low Yik Hang (Percussion).  
**Education Resource Writer:** Sarah Phua

## Activity 1

### Musical Terms

In this performance, the musicians played different music to match the emotions and movements of the characters!

Here are the elements of music that the composer worked with. Match the musical elements to the correct definitions!



Answer: 1b, 2e, 3c, 4a, 5d

- |           |   |
|-----------|---|
| 1 Melody  | a Regular pattern of beats                                      |
| 2 Harmony | b A tune that is the easiest to hum along to                    |
| 3 Tempo   | c The speed and rate of a song                                  |
| 4 Rhythm  | d This is known as a musical note. This note can be high or low |
| 5 Pitch   | e More than one tone being played or heard at the same time     |

## Activity 2

### Emotions

Through this performance, you have learnt that music can represent these four emotions. Could you identify them?



\_\_\_\_\_

Answer: Happiness, Anger, Sadness and Joy



### Activity 3

### Match the Animals to the Instruments

Each instrument portrayed a different character in this performance.  
Match and write the name of the instruments to the characters they represent.



Gaohu



Erhu



Zhonghu



Cello



Double Bass



Pipa



Yangqin



Zhongruan



Guzheng



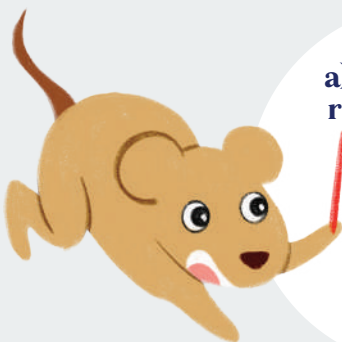
Sheng



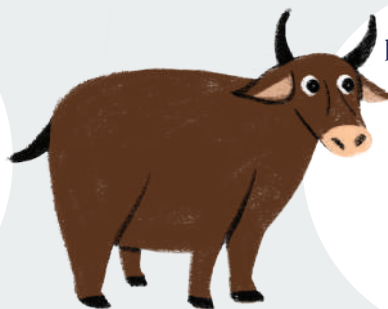
Dizi



Dagu



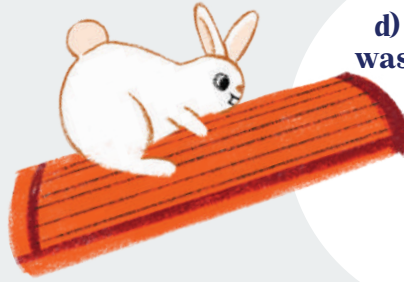
a) The Rat was represented by the:



b) The Ox was represented by the:



c) The Tiger was represented by the:



d) The Rabbit was represented by the:



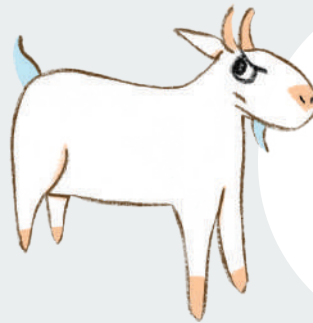
e) The Dragon was represented by the:



f) The Snake was represented by the:



g) The Horse was represented by the:



h) The Goat was represented by the:



i) The Monkey was represented by the:



j) The Rooster was represented by the:



k) The Dog was represented by the:



l) The Pig was represented by the:

## Activity 4 Tempo

A **composer** is a person who writes music. When composing for this performance, the composer Sulwyn, had to decide on the tempo of the music based on the mood of each scene.

- Recall how you felt when you watched the following scenes and draw an emoji in the box.
- Suggest a tempo (*very fast, fast, moderate, slow, very slow*) that suits the emotion of the scene.

An example has been given for Scene 1.



1)

**Eg. Scene 1:**  
Creation scene where  
all creatures and  
nature are born.

a) Emoji:



Pleased

b) Tempo:

moderate

2)

**Scene 2:**  
War between  
the animals  
(Ox charges, rat bites, dog  
and rooster fight etc.)

a) Emoji:

b) Tempo:

3)

**Scene 3:**  
The rat is hurt and  
explains his family  
story to the animals.

a) Emoji:

b) Tempo:

4)

**Scene 4:**  
The animals cheering  
for one another at  
the finishing line.

a) Emoji:

b) Tempo:

## Activity 5 The Playwright in Me!

A **playwright** is someone who writes plays.

The playwright of this performance, Tze Chien, had written the various scenes with many different emotions!

Scan the QR code and listen closely. As you listen to the piece of music taken from *The Musical Zodiac*, let your mind wander and imagine what is happening. Write a story or draw a picture of the scene that comes to mind. It could even be an emotion, a place or a person.

Share your response with your friends and find out how the same piece of music can bring out different stories!



**Your story, your imagination...**

## Activity 6

## What is teamwork?



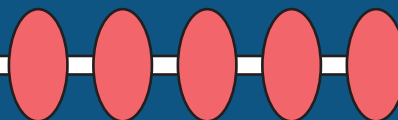
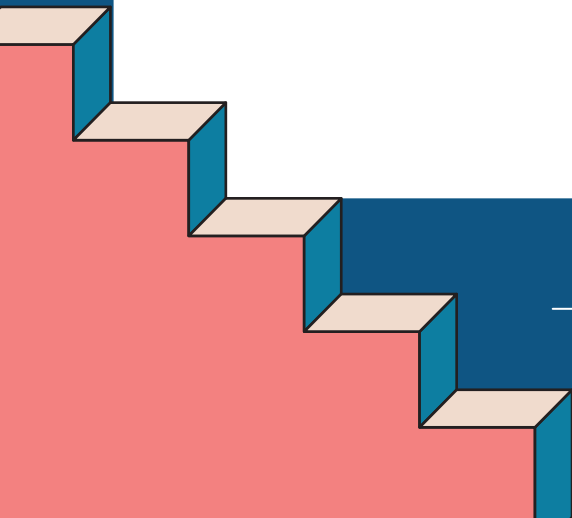
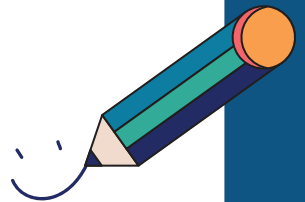
- 1 What did you learn about teamwork from this performance?

- 2 Imagine you are the **rat** in the race. Write a letter to all the animals to express your feelings to them after the race...

Dear friends,



Love, Rat...



## Explore More For Students



1  
**I Kid You Not #3**  
- Hannah on the Guzheng  
<https://bit.ly/kidyounot3>



4  
**A Look at Traditional Chinese Music**  
<https://bit.ly/tradimusic>



2  
**I Kid You Not #4**  
- Hannah the Guzheng Teacher  
<https://bit.ly/kidyounot4>



5  
**The Story of the Chinese Zodiac**  
- Why are there 12 animals?  
<https://bit.ly/story-zodiac>



3  
**I Kid You Not #8**  
- The Art of Chinese String Instruments  
<https://bit.ly/kidyounot8>

## Explore More For Teachers



1  
**Introduction to Chinese String Instruments**  
<https://bit.ly/chinesestring>

## About Ding Yi Music Company

Established in 2007, Ding Yi Music Company is recognised as one of Singapore's most prodigious Chinese chamber ensemble with a vast repertoire ranging from traditional Chinese music to contemporary and cross-genre work, bringing the best Chinese chamber music to the Singapore and international stage.

Follow Ding Yi on Socials!

   @dingyimusic

Interested to learn more about the arts?  
Check out [www.esplanade.com/offstage/schools](http://www.esplanade.com/offstage/schools)  
for more resources and content!

Information correct at time of print. No part of this material may be reproduced in any other form without permission from The Esplanade Co., Ltd.