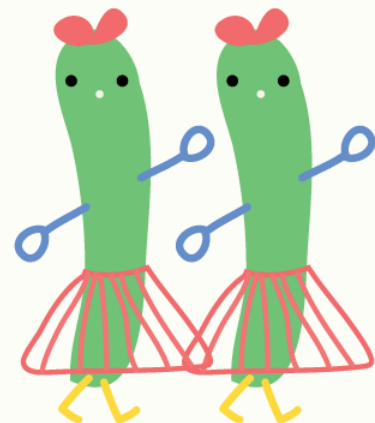




Esplanade
Presents

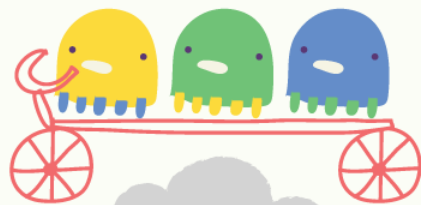
Octoburst!



OCTOBURST!®

A CHILDREN'S FESTIVAL

7 OCT 2022



Pre-visit Guide: PIP's PLAYbox

Can We Be Friends?

by Grace Kalaiselvi and Wendy Toh



PIP's PLAYbox

This is PIP's PLAYbox. It is a space for children and their adults to play together and enjoy performances and craft activities.

Can we be friends?



I am going to PIP's PLAYbox to watch *Can We Be Friends?* that is part of *Octoburst!*.

The show is by Grace Kalaiselvi and Wendy Toh.



Where to go

When we enter PIP's PLAYbox, an usher can show me where to sit if I want to watch the performance.

I can sit on the floor, cushions or ask an usher for a chair.

Moving about



If I want to move or dance on the spot during the show, that is okay.

If I need to go to the toilet during the show, that is okay. An adult or an usher can show me the way to the toilet.



A quieter place

Sometimes, when the show is happening, I may want to look for a quieter place. I can do that anytime.

I can go back to the show anytime when I am ready.

Performer

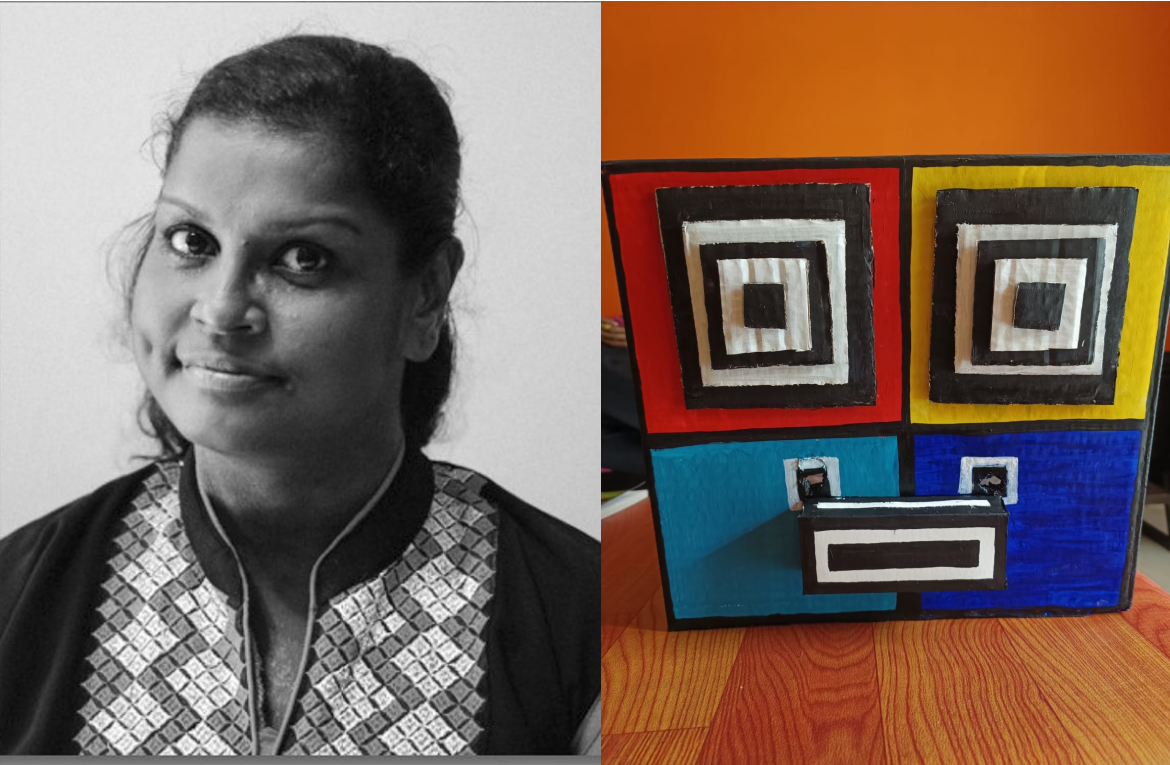


A performer is someone who performs in a show.

Performers can act, sing, dance and play musical instruments—sometimes all at the same time!

I will see these performers in the show.

Grace Kalaiselvi



This is Grace Kalaiselvi. She plays Square. Square is unsure if she can be friends with Circle.

Grace will be wearing a costume to become Square.

Wendy Toh



This is Wendy Toh. She plays Circle. Circle is unsure if she can be friends with Square.

Wendy will be wearing a costume to become Circle.

Esplanade
&Me

Join **PIP** on an
arts adventure.



Sign up now

www.esplanade.com/membership